

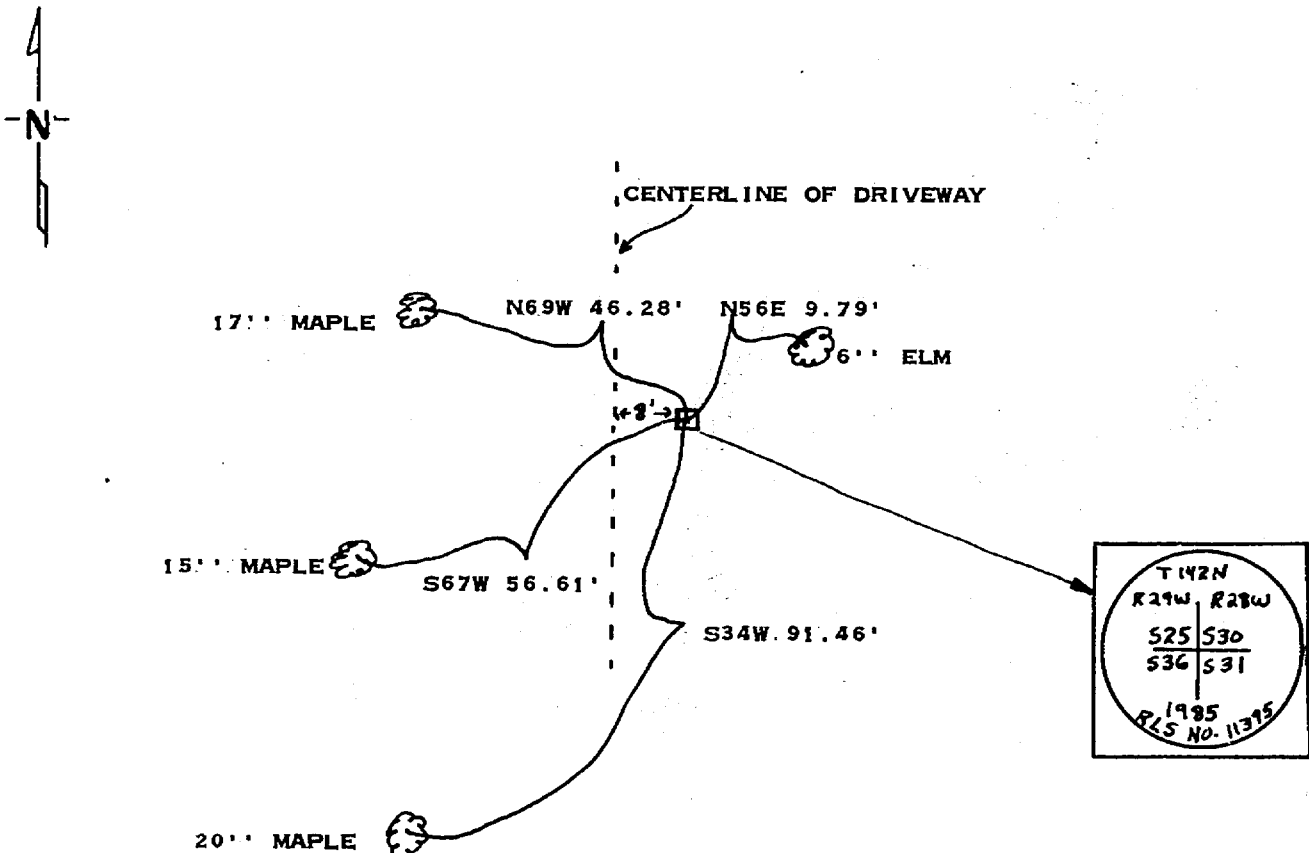
# CERTIFICATE OF LOCATION OF GOVERNMENT CORNER

Northeast Corner of Section 36, Township 142 N., Range 29 W., 5th P.M.  
STATE OF MINNESOTA, County of CASS

At the corner location shown on the sketch:

- On 6/24/1985 found a 2" I.P. set proportionally from west, east and south,
  - left monument as found,  lowered monument,  removed monument (explain)
- On 6/26/1985 placed a 2" square iron with stamped aluminum cap

SKETCH OF REFERENCE TIES



Bearings assumed using 5° declination  
Distances to 60d nail in side of tree, scribed "BT"

Statement of evidence relative to this corner location is on back of page. 292694

I hereby certify that this document and the data contained herein was prepared by me or under my direct supervision.

Walter S. Lum 7-29-85  
SIGNATURE DATE

Registration No. 11395  
 Land Surveyor,  Professional Engineer  
 County Surveyor,  County Engineer

OFFICE OF THE REGISTER OF DEEDS  
County of Cass

I hereby certify that this document was filed in the Reg. of Deeds office at 3:00 P.M. on the 28 day of Oct. A.D., 19 86

Register of Deeds Claudine Kayler  
By MJ, Deputy

DOCUMENT NO. 292694

STATEMENT OF EVIDENCE Northeast corner Sec. 36, T.142N., R.29W., 5th P.M.

- 1873 U.S. General Land Office survey set a wood post for this corner and marked the following bearing trees: 18" Poplar S 24°E 25 lks., 6" Poplar S 80°W 20lks., 6" Elm N 4°W 10 lks., 16" Sugar Maple N 80°E 65 lks.
- 1916 County Survey Record Book "B" pages 102-104, show a survey by John Curo. He found 2 old gov't BT's: 18" Poplar S 24°E 25 lks., 16" Maple N 80°E 65 lks. and set a wood post.
- 1916 County Survey Record Book "B" pages 391-398, show a survey by John Curo. He found the post set from gov't BT's and set a 2x48" I.P. and marked the following bearing trees: 12" Maple N 72°W 59', 16" Maple S 80°E 37.50', 10" Maple N 16°E 49.7' and 7" Elm S 51°W 43.50'
- 1918 U.S. General Land Office resurvey found the 2" I.P., along side set a 2x36" I.P. with marked brass cap and marked the following bearing trees: 8" Maple N 77°15'W 67 lks., 8" Elm S 49°45'W 67 lks., 22" W. Oak S 63°15'E 160 lks., 10" Basswood N 13°E 127 lks.
- 1970 R.F. Schneider, private surveyor, set a 2" I.P. from corners west, east and south. He used this corner for plat of BEAR ISLAND VIEW. He marked the following bearings: PK nail on side of P.P. S 14°W 117.95', PK nail on side of telephone box pole East 56.94', PK in lower blaze 4" Elm N 57°E 9.48'
- 1983 County Surveyor, Gary Stevenson, and Survey Technician, Terry Freeman, found the 2" I.P. on top of east bank of road, also found SW & SE 1970 Schneider ties. Also rough chained north- 1928 GLO resurvey tie to old post office building checks well.
- 1985 County Surveyor, Walt Curo, and Survey Technician, Terry Freeman, visited the corner. Found 1970 ties and I.P. in place on June 24.
- 1985 On June 26, T. Freeman, Cass County and Curt Krause and Jeff Allison, USFS survey crew, pulled 2"x 2.5' I.P. Set 2" square iron with stamped 3" aluminum cap. New bearing trees were marked as shown the front of this certificate. Cass County sign post and survey marker sign East 2 feet.