

CERTIFICATE OF LOCATION OF GOVERNMENT CORNER

North Quarter _____ Corner of Section 30, Township 145, Range 28, 5th P.M.
Cass

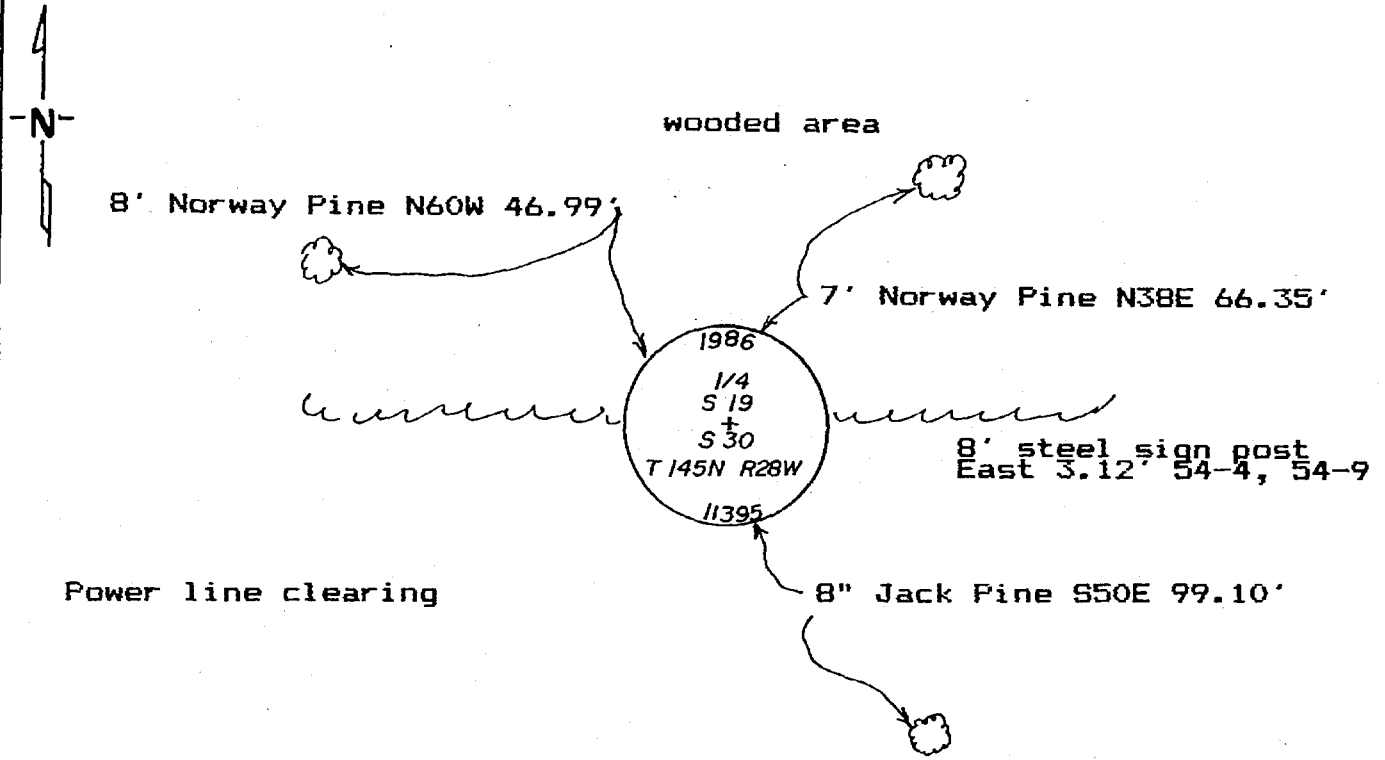
STATE OF MINNESOTA, County of _____

At the corner location shown on the sketch:

- On 8-27-86 found a 1-1/4"x36" well point on N. edge of the line at clearing.
- left monument as found, lowered monument, removed monument (explain)
- On 9-4-86 placed a 2"x4.5' galv. iron pipe with brass cap and plastic base with inbedded magnet.

Not to scale.

SKETCH OF REFERENCE TIES



All measurements are to spks. in side of the tree, trees are double blazed and scribed and painted red with USFS 54-3 bearing tree tag.

Statement of evidence relative to this corner location is on back of page. 291636

I hereby certify that this document and the data contained herein was prepared by me or under my direct supervision.

Walter E. Lucas 9-10-86
SIGNATURE DATE

Registration No. 11395

- Land Surveyor, Professional Engineer
- County Surveyor, County Engineer

OFFICE OF THE REGISTER OF DEEDS

County of Cass

I hereby certify that this document was filed in the Reg. of Deeds office at 10:20 A.M. on the 15 day of Sept. A.D., 1986

Register of Deeds Cloudiva Kayler
By MS, Deputy

DOCUMENT NO. 291636

STATEMENT OF EVIDENCE

North Quarter Corner of Section 30, Township
145 north, Range 28 West of the 5th Principal Meridian

1873 GLO set a wood post to mark this corner and marked the
following BT'S

10" Jack Pine	south 15 West	83 Lks (54.78 feet)
8" Jack Pine	North 13 East	90 Lks (59.40 feet)

1938 USFS found a pipe set for corner, possibly by a survey of
Indian lands. A location tag was placed on a Jack Pine
NE of corner. they also found iron pipes at the W 1/16
and E 1/16 corners.

1986 On August 27, Walter E. Curo found 1-1/4"x36" well points
at the W1/16, N1/4, and E1/16 corners and ran a traverse
connecting the W 1/16 corner and the N1/4 corner and the
E 1/16 corner with the Northeast and Northwest corners of
the section. They are not on any kind of line but the iron
pipe near the W1/16 corner is at the proportional distance
between the iron pipe at the Northwest corner and the
North 1/4 corner. This iron pipe is on the north side of a
cleared power line and on the south side of a plantation
20-30 years old so any original evidence has been
destroyed. I believe that this pipe is the best evidence
for the location of the N1/4 corner. Replace the well
point with a 2"x4.5' galv. iron pipe with plastic base
with inbedded magnet. Marked new bearing trees: 8" Norway
Pine N 66 W 46.99', 7" Norway Pine N 38 E 66.35', 8" Jack
Pine S 50 E 99.10', 8' Steel sign post East 3.12' with 54-
4, and 54-9 signs.