

CERTIFICATE OF LOCATION OF GOVERNMENT CORNER

South Quarter _____ Corner of Section 36, Township 142, Range 26, 5th P.M.
Cass

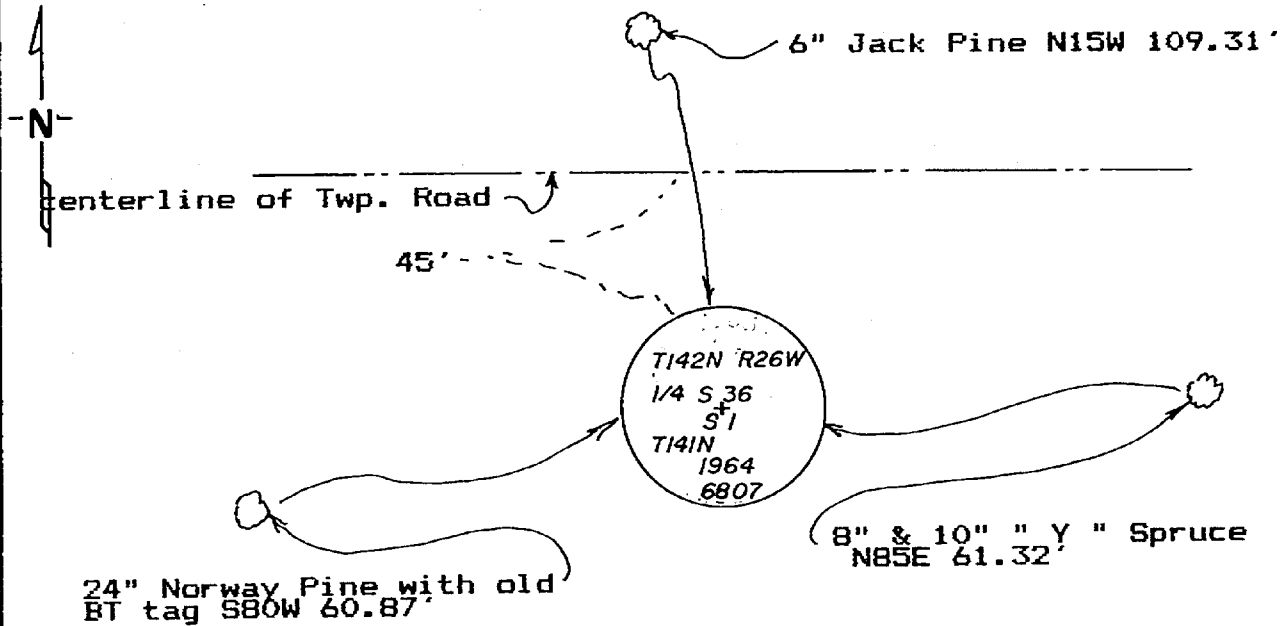
STATE OF MINNESOTA, County of _____

At the corner location shown on the sketch:

- On 4-29-86 found a 6" concrete monument with brass cap 45 feet south of center of the Twp. Road
- left monument as found, lowered monument, removed monument (explain)
- On _____ placed a _____
DATE

Not to scale.

SKETCH OF REFERENCE TIES



All measurements are to spks. in side of the tree, trees are double blazed and scribed and painted red with USFS 54-3 bearing tree tag.

Statement of evidence relative to this corner location is on back of page. 291478

I hereby certify that this document and the data contained herein was prepared by me or under my direct supervision.

Wally E. Linn 7-2-86
SIGNATURE DATE

Registration No. 11395
 Land Surveyor, Professional Engineer
 County Surveyor, County Engineer

OFFICE OF THE REGISTER OF DEEDS
County of Cass

I hereby certify that this document was filed in the Reg. of Deeds office at 3:38 P.M. on the 5 day of Sept. A.D., 19 86

Register of Deeds Clondine Kaylor
By MS, Deputy

DOCUMENT NO. 291478

STATEMENT OF EVIDENCE South Quarter Corner Section 36, T.142 N., R.26 W., 5th
P.M.

- 1871 U.S. General Land Office survey set a wood post for this corner and marked the following bearing trees: 4" Aspen N 65 E 10 lks., 8" W. Pine S 38 W 58 lks.
- 1964 Bill Okerman, USFS Surveyor, found a 2" iron pipe at an old fence corner. He found an old rotted stump S 48 W 40' from corner. Original notes call for a W. Pine S 38 W 38.28'. He set a 6"x60" concrete monument with 3" bronze tablet in place of found iron. Filed a certificate of Location of Government Corner and marked the following bearing trees: 19" Red Pine N 72 E 60.9', 23" W. Pine N 32 W 32.1'
- 1986 Walter E. Curo found a 6"x60" concrete monument, 20" above ground in good condition. Also found 24" Red Pine S 80 W 60.87' with old scribing (must be 1964 Red Pine that is labeled N 72 E). Other 1964 tree falls in road. I file this certificate to update the 1964 Okerman certificate.