

CERTIFICATE OF LOCATION OF GOVERNMENT CORNER

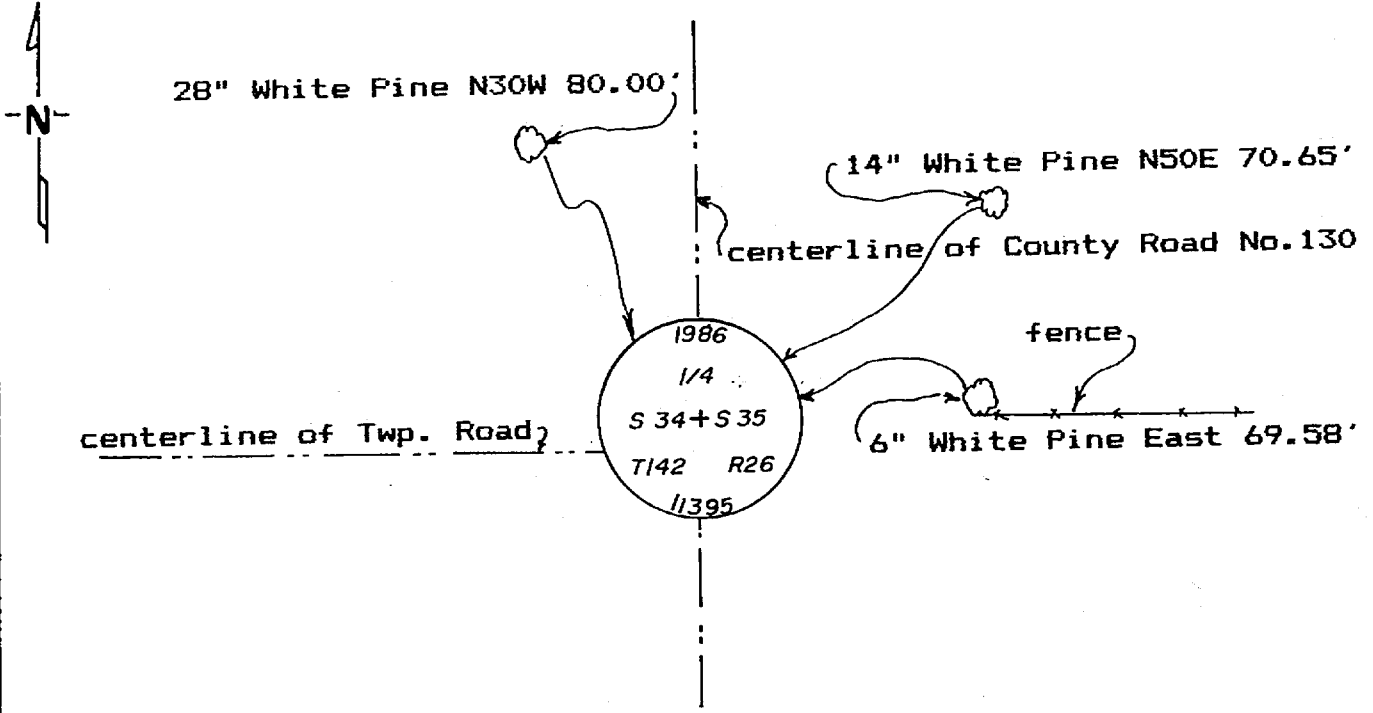
East Quarter _____ Corner of Section 34, Township 142, Range 26, 5th P.M.
Cass

STATE OF MINNESOTA, County of _____

At the corner location shown on the sketch:

- On _____ found a _____
DATE
- left monument as found, lowered monument, removed monument (explain)
- On 6-18-86 placed a 2"x24" galv. iron pipe with brass cap
DATE 10" Below surface of County Road No. 130 set R.R. spk on top

Not to scale. SKETCH OF REFERENCE TIES



All measurements are to spks. in side of the tree, trees are double blazed and scribed and painted red with USFS 54-3 bearing tree tag.

Statement of evidence relative to this corner location is on back of page. 291473

I hereby certify that this document and the data contained herein was prepared by me or under my direct supervision.

Walter E. Lewis 9-2-86
SIGNATURE DATE

Registration No. 11395
 Land Surveyor, Professional Engineer
 County Surveyor, County Engineer

OFFICE OF THE REGISTER OF DEEDS
County of Cass

I hereby certify that this document was filed in the Reg. of Deeds office at 3:33 P.M. on the 5 day of Sept. A.D., 1986

Register of Deeds Claudine Kaye
By MS, Deputy

DOCUMENT NO. 291473 5th

STATEMENT OF EVIDENCE East Quarter Corner Section 34, T. 142 N.,
R. 26 W., 5th P.M.

- 1872 U.S. General Land Office survey set a wood post for this corner and marked the following bearing trees: 8" W. Pine N 56 E 20 lks., 6" W. Pine S 77 W 11 lks.
- 1986 Walter E. Curo set a 2" x 24" galv. iron pipe with brass cap 8" below surface in the centerline of County road # 130 in line with a fence to the East and 3' North of centerline of road to the West.