

CERTIFICATE OF LOCATION OF GOVERNMENT CORNER

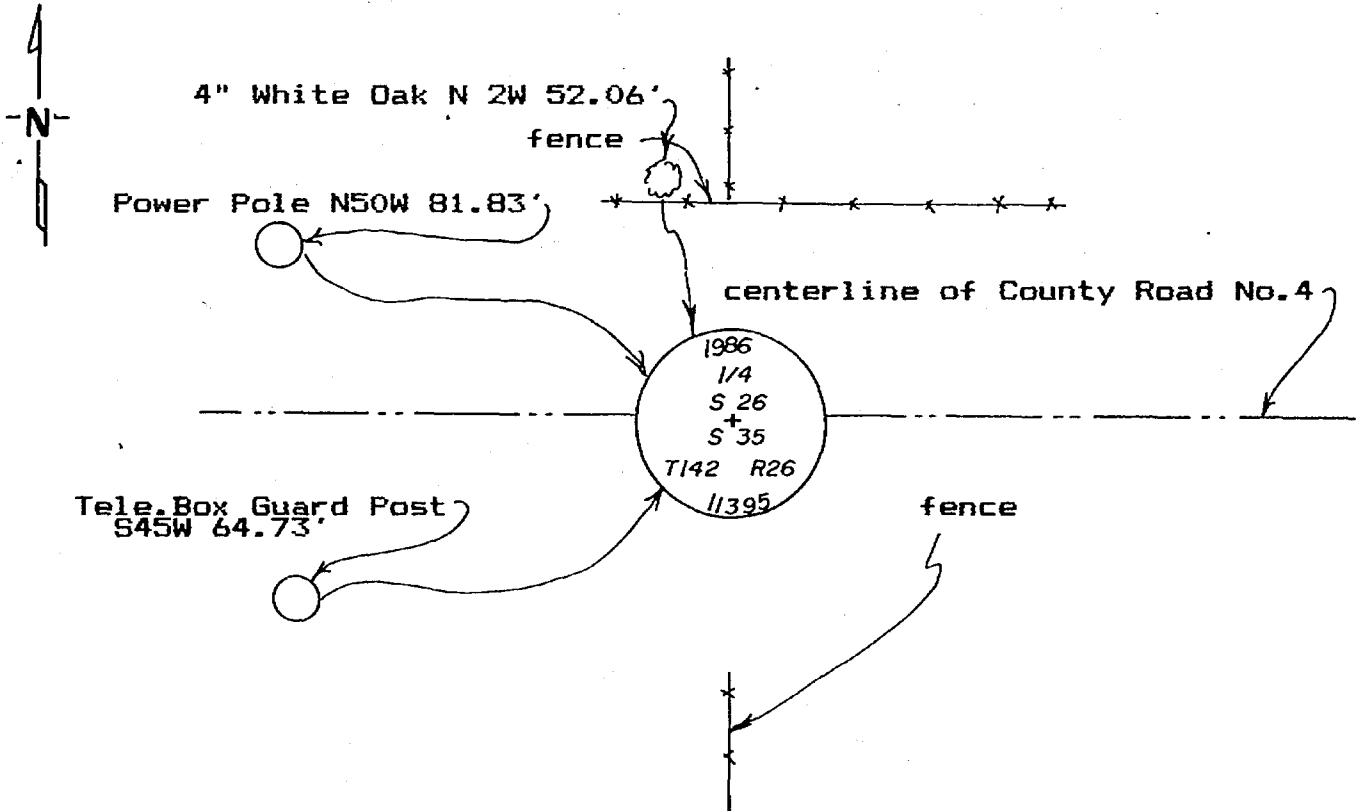
South Quarter Corner of Section 26, Township 142, Range 26, 5th P.M.
Cass

STATE OF MINNESOTA, County of _____

At the corner location shown on the sketch:

- On _____ found a _____
DATE
- left monument as found, lowered monument, removed monument (explain)
- On 6-12-86 placed a 2"x24" galv. iron pipe with brass cap
1" ~~Below~~ Below surface of blacktop in County Road No.4

Not to scale. SKETCH OF REFERENCE TIES



All measurements are to spks. in side of the tree, trees are double blazed and scribed and painted red with USFS 54-3 bearing tree tag.

Statement of evidence relative to this corner location is on back of page. 291471

I hereby certify that this document and the data contained herein was prepared by me or under my direct supervision.

Walter E. Lewis 9-2-86
SIGNATURE DATE

Registration No. 11395
 Land Surveyor, Professional Engineer
 County Surveyor, County Engineer

OFFICE OF THE REGISTER OF DEEDS

County of Cass

I hereby certify that this document was filed in the Reg. of Deeds office at 3:31 P.M. on the 5 day of Sept. A.D., 1986

Register of Deeds Claudine King
 By MS, Deputy

DOCUMENT NO. 291471

STATEMENT OF EVIDENCE South Quarter Corner Section 26, T. 142 N.,
R. 26 W., 5th P.M.

- 1872 U.S. General Land Office survey set a wood post for this corner and marked the following bearing trees: 8" Maple S 78 E 6 lks., 6" Fir N 70 W 13 lks.
- 1921 James Flynn in Resurvey of Section 26 set a pipe in centerline of Highway at a single proportioned distance between the Southeast and Southwest corners of Section 26.
- 1982 County Highway Department searched for this corner, but found nothing.
- 1986 Walter E. Curo set a 2" galv. iron pipe with brass cap 1" below surface of black top in centerline of County road by single proportion between the Southeast and Southwest corner of Section 26. There is a fence North and a fence South which line up with this corner.