

CERTIFICATE OF LOCATION OF GOVERNMENT CORNER

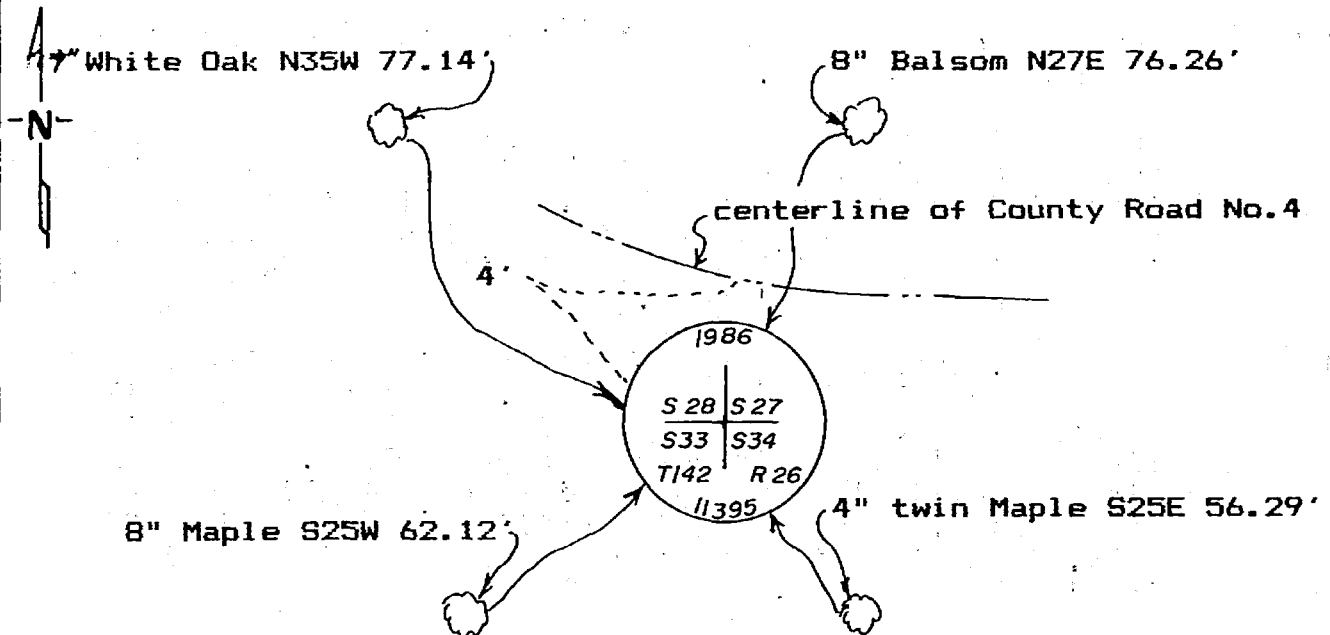
Southeast Corner of Section 28, Township 142, Range 26, 5th P.M.
 STATE OF MINNESOTA, County of Cass

At the corner location shown on the sketch:

- On 4-29-86 found a 2" iron pipe 2.3' below the surface of
courty Road number 4
 left monument as found, lowered monument, removed monument (explain)
- On 4-29-86 placed a 2"x24" galv. iron pipe with brass cap
1" ^{DATE} below surface of blacktop.

Not to scale.

SKETCH OF REFERENCE TIES



All measurements are to spks. in side of the tree, trees are double blazed and scribed and painted red with USFS 54-3 bearing tree tag.

Statement of evidence relative to this corner location is on back of page.

291468

I hereby certify that this document and the data contained herein was prepared by me or under my direct supervision.

Walter E. Laro 9-2-86
SIGNATURE DATE

Registration No. 11395
 Land Surveyor, Professional Engineer
 County Surveyor, County Engineer

OFFICE OF THE REGISTER OF DEEDS

County of Cass

I hereby certify that this document was filed in the Reg. of Deeds office at 3:28 P.M. on the 5 day of Sept A.D., 1986

Register of Deeds Claudine Kayler
 By MS Deputy

DOCUMENT NO. 291468

STATEMENT OF EVIDENCE Southeast Corner Section 28, T. 142 N.,
R. 26 W., 5th P.M.

- 1872 U.S. General Land Office survey set a wood post for this corner and marked the following bearing trees: 14" W. Pine S 45 W 10 lks., 28" W. Pine N 39 E 60 lks., 14" Birch N 50 W 47 lks., 16" W. Pine S 55 W 42 lks.
- 1940 CCC notes, show location poster on south side 4" Oak, South .60 chains to corner.
- 1956 County Highway Department found 2" iron pipe 55' South of PI of road
- 1961 DNR found 2" iron pipe inplace.
- 1973 Curt Krause, USFS found a 1½" iron pipe South of highway on top of back slope.
- 1982 County Highway Department and Terry Freeman, Cass County surveyors Office, found an iron pipe at the PI and also an iron pipe on top of back slope. The pipe in the road was set by Roger Mustonen, a Registered Land Surveyor, from information from Bill Spain, a Registered Land Surveyor. Roger found a pipe 3' down.
- 1986 Walter E. Curo found Roger Mustonen pipe and also the pipe on the back slope 55' South of PI. An old set of Rail Road plans from about 1938 shows a distace along the section line of 468' from this corner to centerline. We have a distance of 464' from Rogers pipe to centerline on our random line. I accept this position and set a 2" x 24" galv. iron pipe with brass cap over the existing pipe that is 3' below surface.