

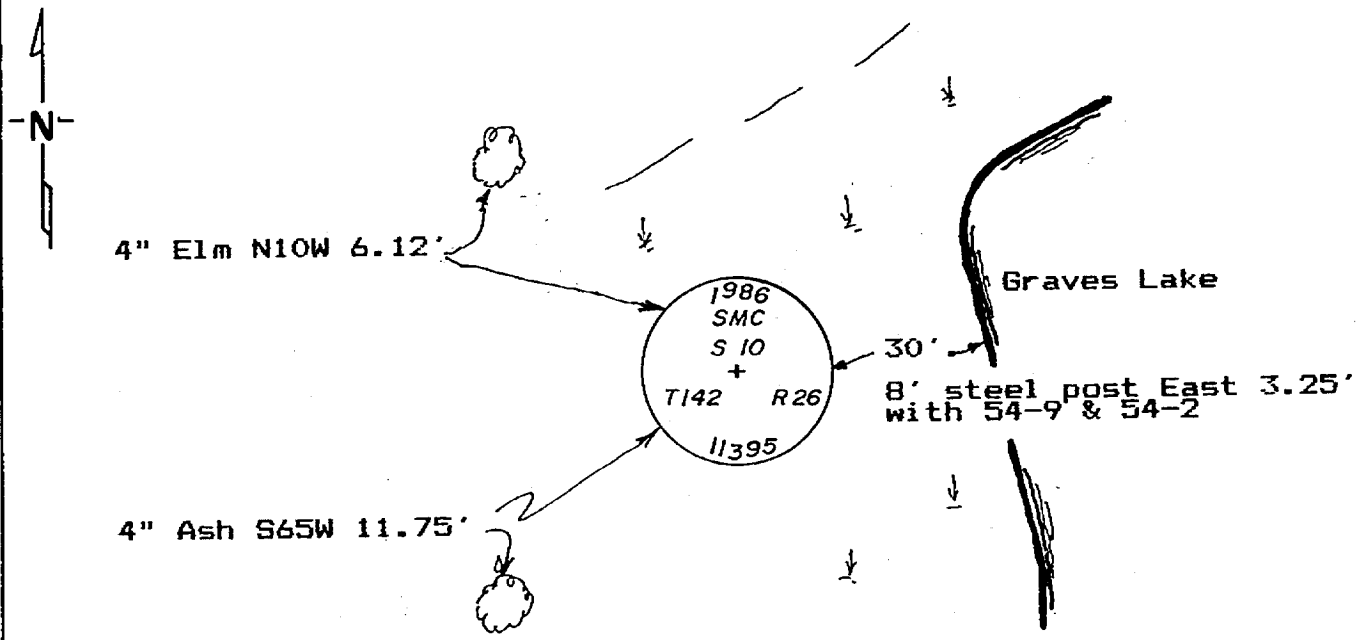
# CERTIFICATE OF LOCATION OF GOVERNMENT CORNER

Spec. Meander \_\_\_\_\_ Corner of Section 10, Township 142, Range 26, 5th P.M.  
Cass  
 STATE OF MINNESOTA, County of \_\_\_\_\_

At the corner location shown on the sketch:

- On \_\_\_\_\_ found a \_\_\_\_\_  
DATE
- left monument as found,  lowered monument,  removed monument (explain)
- On 5-21-86 placed a 2"x60" galv. iron pipe with brass cap  
DATE with 18" out of the ground in low wet area.

Not to scale. SKETCH OF REFERENCE TIES



All measurements are to spks. in side of the tree, trees are double blazed and scribed and painted red with USFS 54-3 bearing tree tag.

Statement of evidence relative to this corner location is on back of page.

I hereby certify that this document and the data contained herein was prepared by me or under my direct supervision.

Walter E. Cass 8-18-86  
SIGNATURE DATE

Registration No. 11395  
 Land Surveyor,  Professional Engineer  
 County Surveyor,  County Engineer

290928  
 OFFICE OF THE REGISTER OF DEEDS  
 County of Cass

I hereby certify that this document was filed in the Reg. of Deeds office at 4:20 P.M. on the 15 day of August A.D., 19 86  
 Register of Deeds Claudine Kayler  
 By M.S., Deputy

DOCUMENT NO. 290928

STATEMENT OF EVIDENCE

Special Meander corner on the east-west centerline of Section 10, Township 142 north, Range 26 West of the 5th Principal Meridian.

5-22-1986 Walter E. Curo set a 2"x60" galv. iron pipe on the east-west quarter line 30 feet west of Grave Lake.