

CERTIFICATE OF LOCATION OF GOVERNMENT CORNER

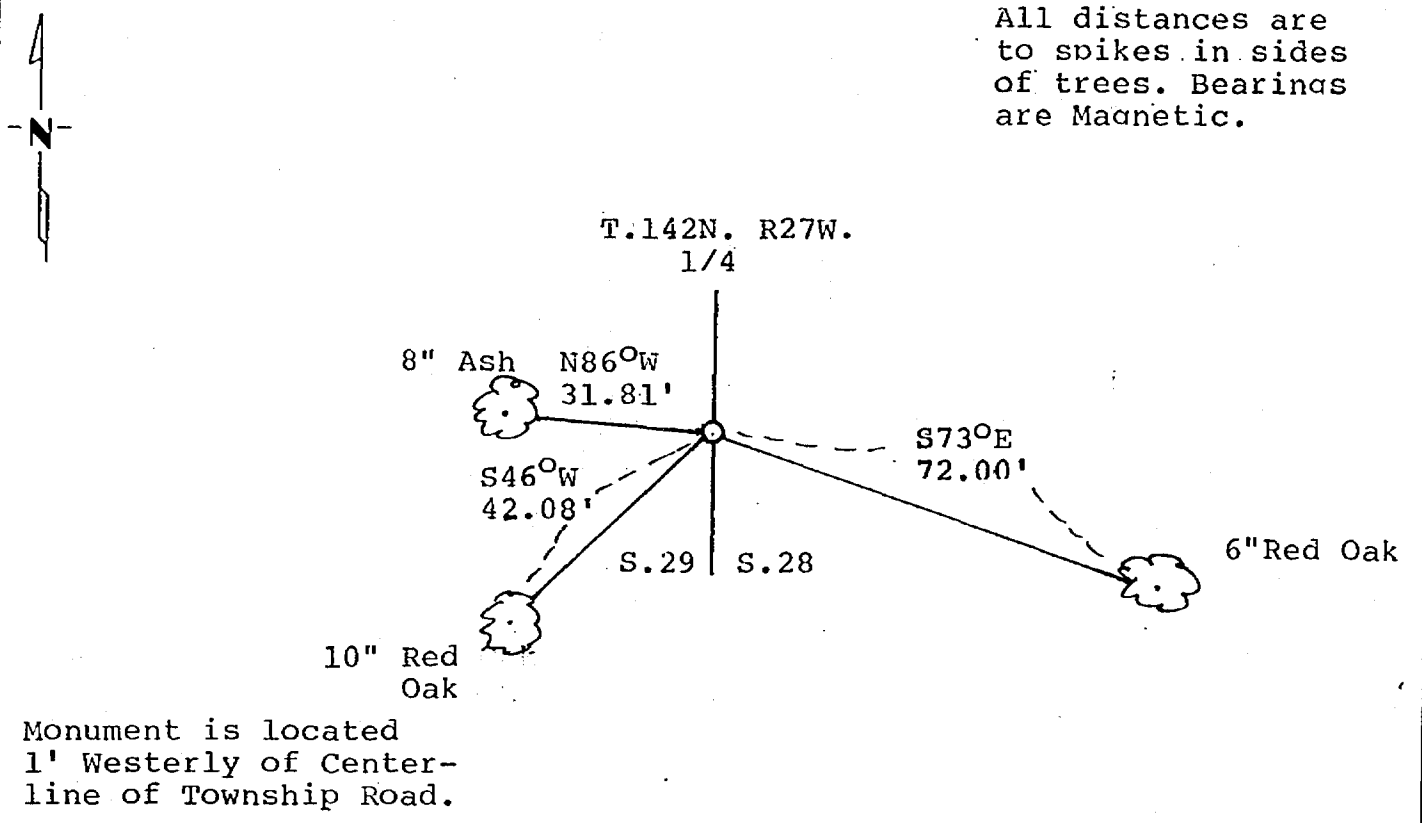
East Quarter Corner of Section 29, Township 142N., Range 27W., 5th P.M.

STATE OF MINNESOTA, County of Cass

At the corner location shown on the sketch:

- On May 24/86 found a 1 inch bent iron pipe partially filled with concrete, a 60 penny spike, and a 3/4" by 36" re-bar
 left monument as found, lowered monument, removed monument (explain)
- On 6-7-86 placed a Cast Iron Monument marked Quarter Corner
6" underground to top of Monument.

SKETCH OF REFERENCE TIES



Statement of evidence relative to this corner location is on back of page. 289503

I hereby certify that this document and the data contained herein was prepared by me or under my direct supervision.

Roger A. Mustrom 6/7/86
SIGNATURE DATE

Registration No. 11946
 Land Surveyor, Professional Engineer
 County Surveyor, County Engineer

OFFICE OF THE COUNTY RECORDER
County of Cass

I hereby certify that this document was filed in the Co. Recorders office at 2:40 P. M. on the 16 day of June A.D., 19 86

County Recorder Claudine Kayler
By MS, Deputy

DOCUMENT NO. 289503

Statement of Evidence:

The East Quarter Corner of Section 29 was first established in 1873 by the G.L.O.

In 1917 J.H. Flynn, Surveyor visited the corner location and found the original bearing trees gone. He marked 2 new trees. From County Survey Book "B" pages 594-595.

In 1919 G.L.O. found a decayed stake in center of R/O/W. Set a 1' by 36' iron pipe with brass cap. Marked 2 new trees.

In 1983 Survey Technician Freeman and Forester Hommitzsch found a bent iron pipe with the cap knocked off and set a spike for corner position and established 2 bearing trees.

In May of 1986, we found and removed the bent iron pipe, the spike and a 3/4 inch bent re-bar. We replaced the found monumentation with a Cass County cast iron Quarter Corner monument to mark and perpetuate the corner position.

All field notes, records and documents generated as a result of this survey are open to anyone willing to take the time to inquire about them for any reason, in the office of AMI SURVEYORS & MAPPERS
HCR 1 BOX 704, HACKENSACK, MINNESOTA 56452