

# CERTIFICATE OF LOCATION OF GOVERNMENT CORNER

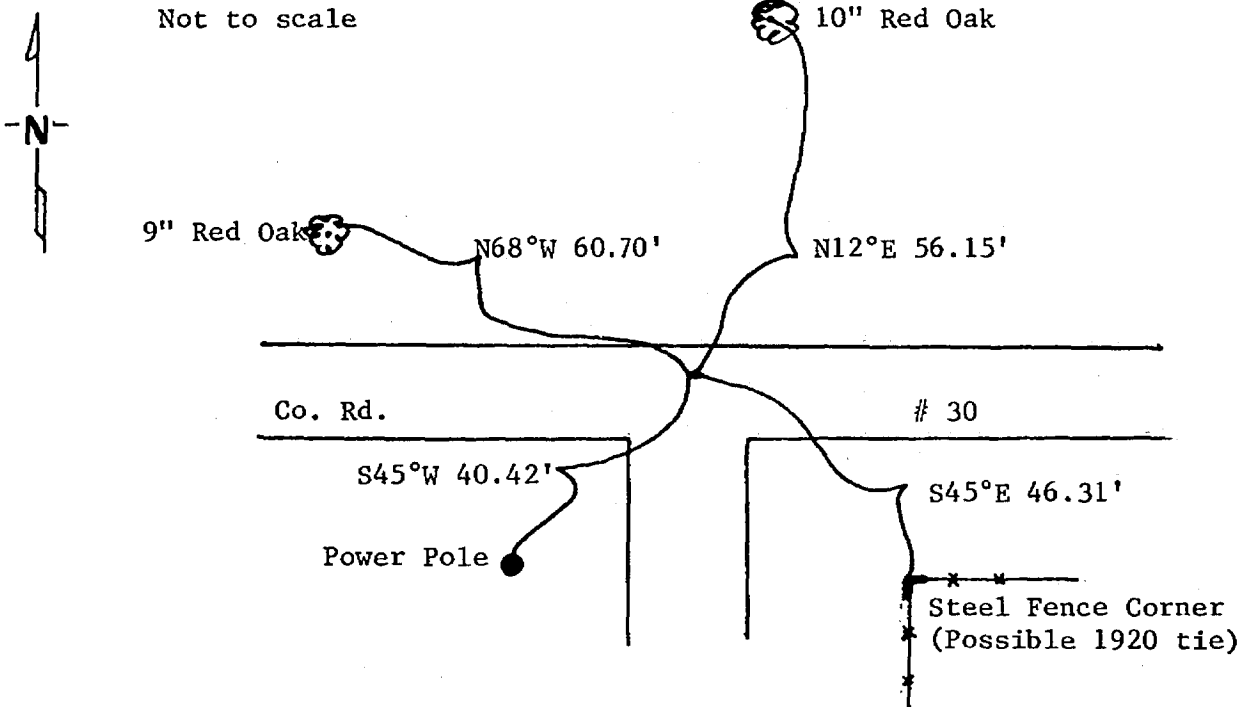
Northeast Corner of Section 23, Township 135 N., Range 32 W., 5th P.M.

STATE OF MINNESOTA, County of CASS

At the corner location shown on the sketch:

- On 8/28/85 found a 1 1/2" I.P. down 0.4', 3' north of centerline E-W rd, 0.75' west of centerline rd S.  
DATE
- left monument as found,  lowered monument,  removed monument (explain)
- On \_\_\_\_\_ placed a \_\_\_\_\_  
DATE

### SKETCH OF REFERENCE TIES



Bearings assumed using 5° declination  
 Trees have double blazes, distances to nail on side of tree

Statement of evidence relative to this corner location is on back of page. 286 246

I hereby certify that this document and the data contained herein was prepared by me or under my direct supervision.

Walt E. Cass 11-29-85  
SIGNATURE DATE

Registration No. 11395  
 Land Surveyor,  Professional Engineer  
 County Surveyor,  County Engineer

OFFICE OF THE REGISTER OF DEEDS  
 County of Cass

I hereby certify that this document was filed in the Reg. of Deeds office at 4:00 P.M. on the 9 day of Dec. A.D., 1985

Register of Deeds Claudine Kaylor  
 By MS, Deputy

DOCUMENT NO. 286 246

STATEMENT OF EVIDENCE Northeast Corner Section 23, T135N., R.32W., 5th P.M.

- 1866 U.S. General Land Office survey set a wood post for this corner and marked the following bearing tree: 10" Bl. Oak N53½°E 428 lks.
- 1896 Plat of SWAN VALLEY CEMETARY, by R.H. Whitely, shows a corner.
- 1915 County Survey Record Book "C" page 572, shows a survey by Roy Braynt. He found a large stone.
- 1915 County Survey Record Book "C" page 48, shows a survey by E.B. Horst. He set a 1½X48" I.M.
- 1920 County Survey Record Book "C" page 376, shows a survey by E.L. Tusler. He found an iron monument.  
10" Oak N60°05'W 54.8'  
CFP S45°30'E 46.5'
- 1985 On August 28, Terry Freeman , Cass County Survey Technician, found a 1½" I.P. down 0.4', 3' north of centerline E-W road, 0.75' west of centerline road south. Also found possible 1920 tie S45°E (notes say CFP- difference of 0.2' may be that new post was put in -metal)
- 1985 On November 14, Terry Freeman and Walt Curo, Cass County Surveyor, visited corner and made ties as shown on other side of this certificate.