

# CERTIFICATE OF LOCATION OF GOVERNMENT CORNER

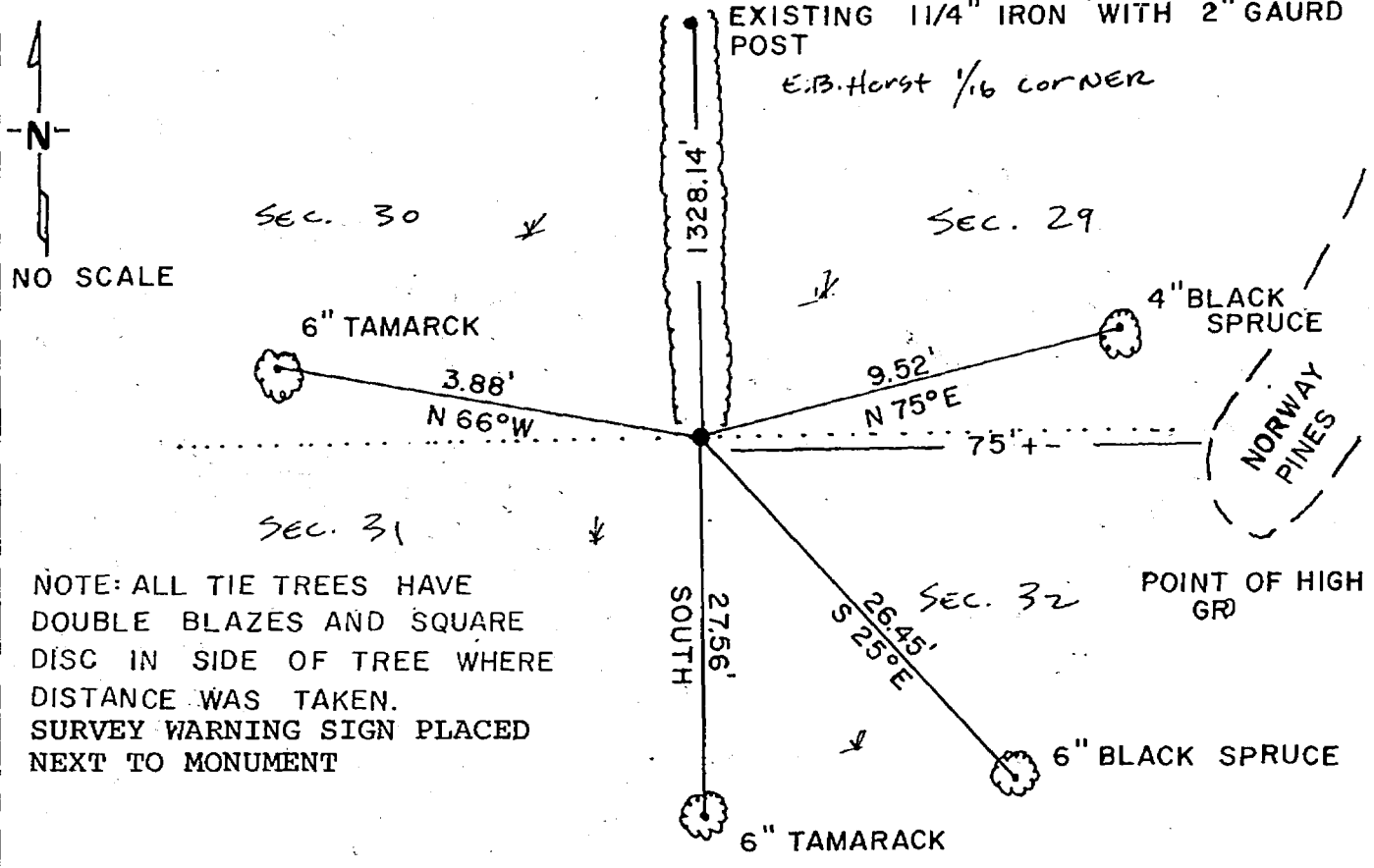
SOUTHEAST Corner of Section 30, Township 135, Range 29, 5 P.M.

STATE OF MINNESOTA, County of CASS

At the corner location shown on the sketch:

- On 8/13/85 found a 2" BOILER FLUE 16" ABOVE GROUND.  
DATE
- left monument as found,  lowered monument,  removed monument (explain)
- On \_\_\_\_\_ placed a \_\_\_\_\_  
DATE

### SKETCH OF REFERENCE TIES



Statement of evidence relative to this corner location is on back of page. 285845

I hereby certify that this document and the data contained herein was prepared by me or under my direct supervision.

David Pardubec 9/13/85  
SIGNATURE DATE

Registration No. 17008

Land Surveyor,  Professional Engineer

County Surveyor,  County Engineer

OFFICE OF THE COUNTY RECORDER  
County of Cass

I hereby certify that this document was filed in the RECORDER'S office at 4:00 P.M. on the 19 day of Nov. A.D., 1985

COUNTY RECORDER Claudise Koyler  
By MS, Deputy

DOCUMENT NO. 285845

STATEMENT OF EVIDENCE FOR: Southeast corner, Section 30, Township 135 North, Range 29 West, Cass County, Minnesota.

In 1865 the original Government Survey was performed and a wood post was set to mark this corner location.

In 1916 E. B. Horst found old Government stake and all BT's dead and set a 2" x 48" boiler flue. County Book "B", page 538-541. Also in 1916 he uses said corner. County Book "B", page 550 - 553.

In 1985 Landecker & Associates, Inc. while surveying in said Section 30 found the 2" x 48" boiler flue as set by Horst in 1916 and accepts this corner to be a perpetuation of the original Government corner.