

CERTIFICATE OF LOCATION OF GOVERNMENT CORNER

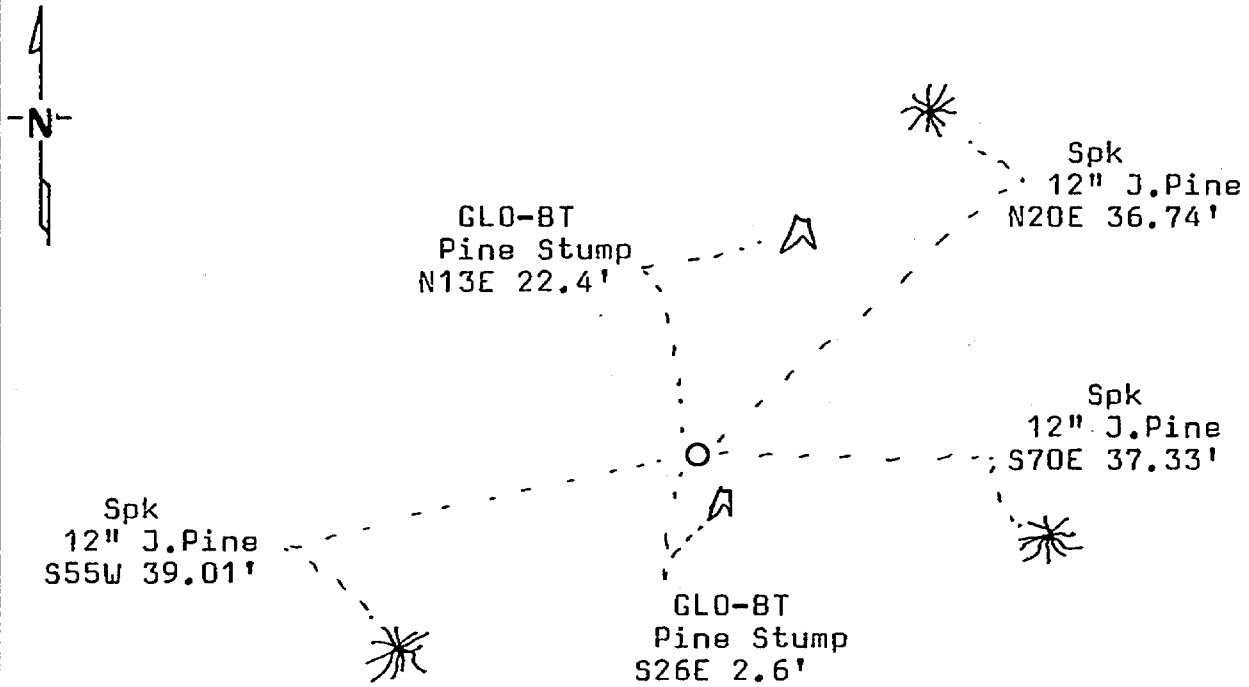
Reservation line
 Mile Post No. 21 Corner of Section 14, Township 141, Range 31, 5th P.M.

STATE OF MINNESOTA, County of CASS

At the corner location shown on the sketch:

- On 4/26/85 found stumps of the original GLO bearing trees
DATE
- left monument as found, lowered monument, removed monument (explain)
- On 7/19/85 placed a 2"x2"x36" steel post with a 3"x3" aluminum cap using bearings and distances from the stumps.
DATE

SKETCH OF REFERENCE TIES



Bearings are approximate

Statement of evidence relative to this corner location is on back of page. 284983

I hereby certify that this document and the data contained herein was prepared by me or under my direct supervision.

Gay A. Stearn 10/7/85
SIGNATURE DATE

Registration No. 12684

Land Surveyor, Professional Engineer

County Surveyor, County Engineer

OFFICE OF THE REGISTER OF DEEDS

County of Cass

I hereby certify that this document was filed in the Reg. of Deeds office at 3:50 P.M. on the 9 day of October A.D., 1985

Register of Deeds Chloé Kuyler

By MS, Deputy

DOCUMENT NO. 284983

STATEMENT OF EVIDENCE

- 1873 - U.S. General Land Office survey set a wood post for this corner and marked the following bearing trees: 22" N.Pine S26E 4 links and 28" N.Pine N13E 34 links.
- 1917 - U.S. General Land Office dependent resurvey determined the position of this corner from the stumps of the original bearing trees. No new monument was set and no new bearing trees were marked.
- 1985 - County Surveyor's Records in the Courthouse were checked and no resurvey information was found on this corner.
- 1985 - U.S. Forest Service office in Cass Lake was contacted for information and no resurvey information was found on this corner.
- 1985 - We ran a traverse connecting the North Quarter corner and the Northeast corner of Section 14 and the reservation point on the east line of Section 14. These corners were set in the 1917 resurvey. The distances and bearings checked well with the 1917 record. Based on the 1917 resurvey, I computed the location of this mile post. In the area of this corner location, we found the remains of 2 large pine stumps that fit the bearings and distances given in the original notes. Both stumps were too badly rotted to identify any blaze or scribe marks. Setting the corner from the two stumps fell within 2 feet of my computed position. Therefore, I accepted the two stumps as being the original bearing trees and set a county monument with a steel sign post for the corner.