

CERTIFICATE OF LOCATION OF GOVERNMENT CORNER

East 1/4 Corner of Section 27, Township 144N, Range 25W, 5th P.M.

STATE OF MINNESOTA, County of Cass

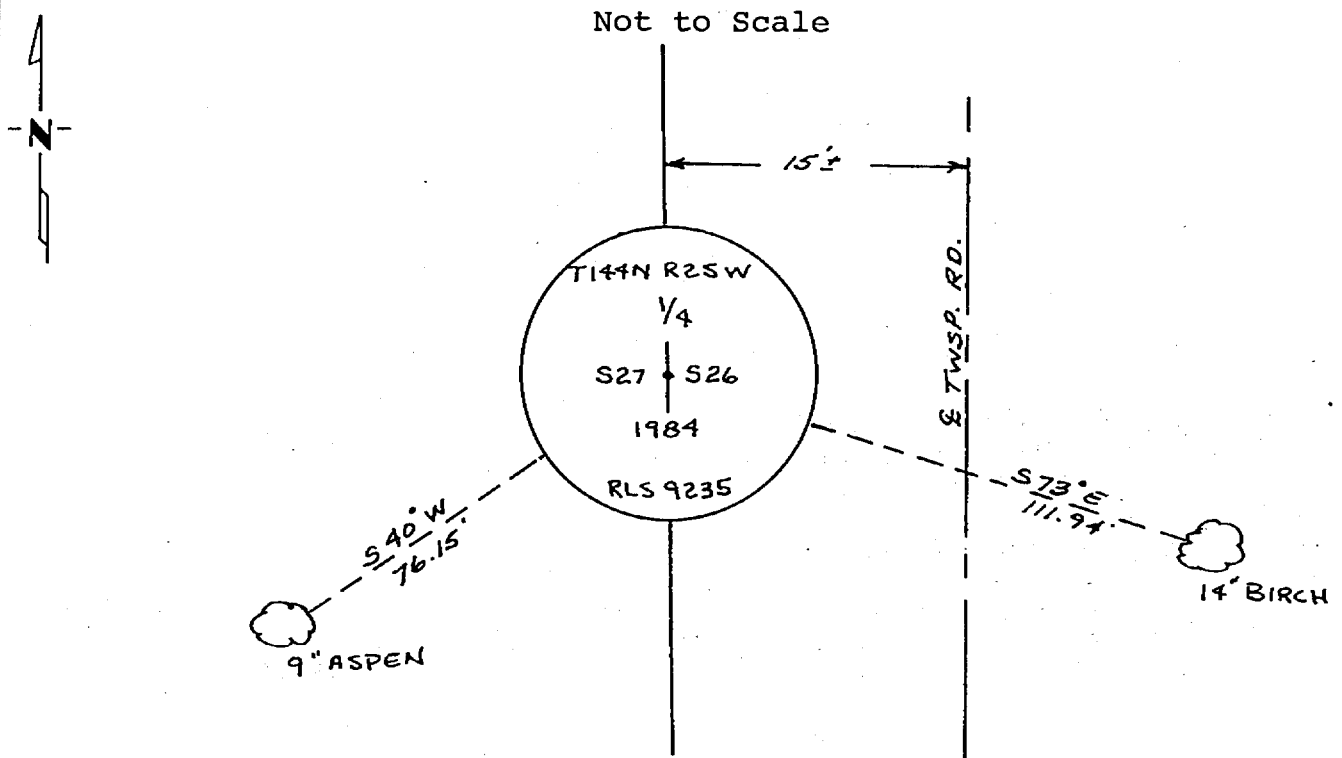
At the corner location shown on the sketch:

- On _____ found a _____
DATE
- left monument as found, lowered monument, removed monument (explain)
- On 11-9-1984 placed a 2 1/2" x 5 feet long galvanized iron pipe
DATE with 3" brass cap. Up 1.5 feet - 15± west of road

5° East declination

SKETCH OF REFERENCE TIES

Not to Scale



NOTE:

Trees are blazed & scribed with B.T. tags. Distances shown are to a 20^d nail in notch painted red on side of tree.

Statement of evidence relative to this corner location is on back of page.

I hereby certify that this document and the data contained herein was prepared by me or under my direct supervision.

James H. Parker SIGNATURE 4/24/85 DATE

Registration No. 9235

- Land Surveyor, Professional Engineer
- County Surveyor, County Engineer

OFFICE OF THE COUNTY RECORDER
County of Cass

I hereby certify that this document was filed in the Co. Recorders office at 11:05 A.M. on the 15 day of May A.D., 1985

County Recorder Claudine Kayler

By MS, Deputy

DOCUMENT NO. 281969

Statement of Evidence:

T17

This corner was originally established in April, 1876, by B.C. Baldwin, Deputy Surveyor. The field notes of that survey are filed in the office of the Secretary of State, St. Paul, Minnesota. Mr. Baldwin's notes state that a post was set to mark the corner and referenced by the following:

A 5" Birch that bears N84°E a distance of 20 links [13.20 feet]
A 5" Sugar that bears S76°W a distance of 10 links [6.60 feet]

In July, 1908, a road survey by James Flynn, Cass County Surveyor, states that he found a 5" Birch [down] N84°E 20 links. He made new references as follows:

A 9" White Birch that bears N15°E a distance of 34.50 feet A 7" White Pine that bears S47°W a distance of 57.50 feet
From County Survey Record Book " C ", page 183.

On August 14, 1984, personnel from Advance Surveying & Engineering Co. made a thorough search for this corner and the above mentioned references but to no avail.

On November 9, 1984, an additional search was made by Advance prior to reestablishing this corner at its "lost" position half way and on line between adjacent section corners and as shown on the sketch.