

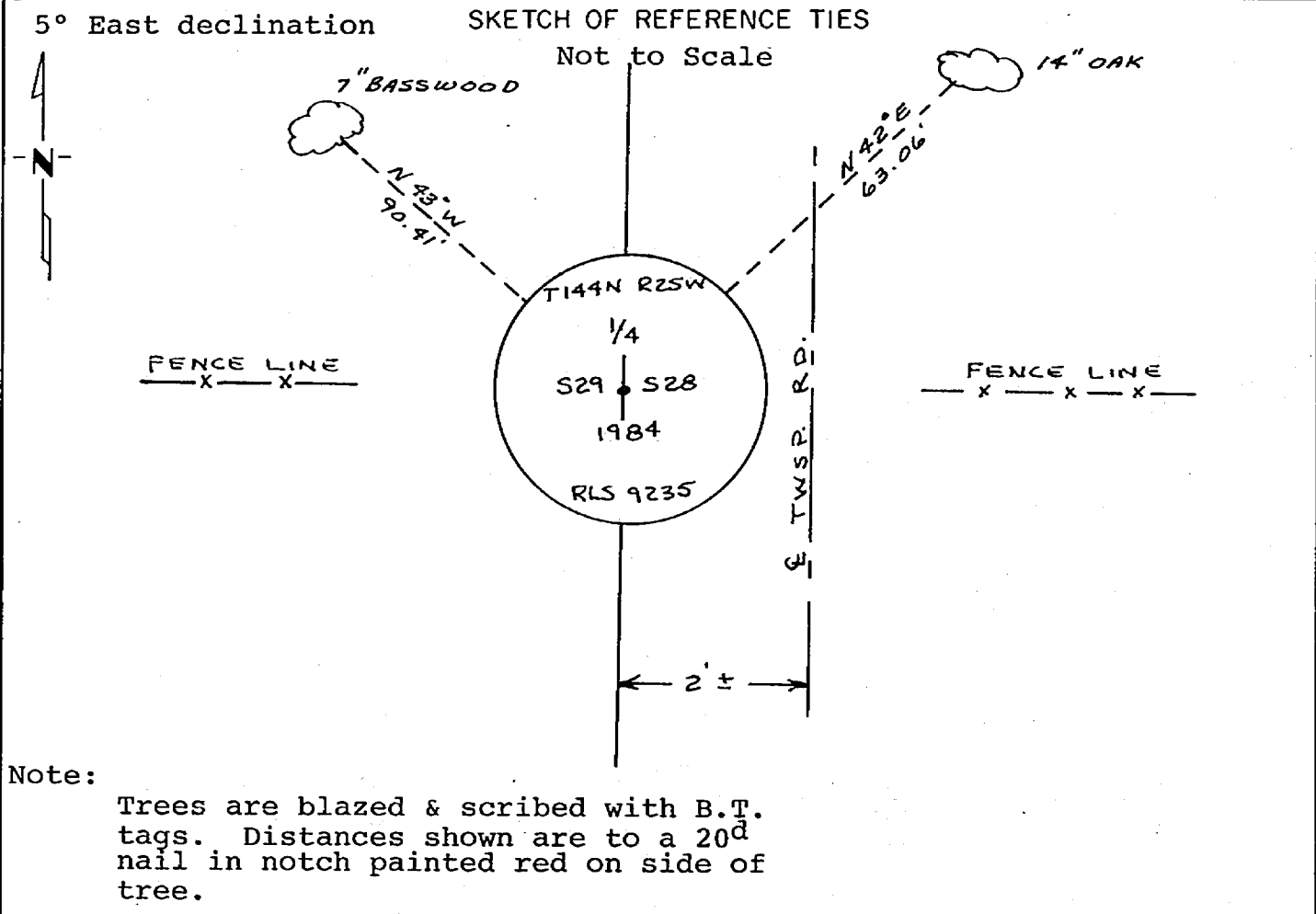
CERTIFICATE OF LOCATION OF GOVERNMENT CORNER

East 1/4 Corner of Section 29, Township 144N, Range 25W, 5th P.M.

STATE OF MINNESOTA, County of Cass

At the corner location shown on the sketch:

- On _____ found a _____
DATE
- left monument as found, lowered monument, removed monument (explain)
- On 10-22-1984 placed a 2 1/2" x 24" galvanized iron pipe with 3"
DATE
brass cap. Down 1.0' - 2' west of E of township road



Statement of evidence relative to this corner location is on back of page.

I hereby certify that this document and the data contained herein was prepared by me or under my direct supervision.

James H. Parker 4/29/85
SIGNATURE DATE

Registration No. 9235

Land Surveyor, Professional Engineer

County Surveyor, County Engineer

281967

OFFICE OF THE COUNTY RECORDER
 County of Cass

I hereby certify that this document was filed in the Co. Recorders office at 10:55 A.M. on the 15 day of May A.D., 1985

County Recorder Claudia K. Ogden
 By MS, Deputy

DOCUMENT NO. 281967

Statement of Evidence:

T9

This corner was originally established in April, 1876, by B.C. Baldwin, Deputy Surveyor. The field notes of that survey are filed in the office of the Secretary of State, St. Paul, Minnesota. Mr. Baldwin's notes state that a post was set to mark the corner and referenced by the following:

A 4" Ash that bears N82°W a distance of 12 links [7.92 feet]
A 8" Sugar that bears S44°E a distance of 12 links [7.92 feet]

In July, 1908, a road survey by James Flynn, Cass County Surveyor, states that he found the corner and witnesses in place. He made new references as follows:

A 10" White Birch that bears N45°W a distance of 43.00 feet
A 7" Yellow Birch that bears S03°E a distance of 64.60 feet
From County Survey Record Book " C ", page 183.

On June 28, 1984, personnel from Advance Surveying & Engineering Co. made a thorough search for this corner and the above mentioned references but to no avail. However there are fence lines running East and West on both sides of the Township Road.

On October 22, 1984, an additional search was made by Advance prior to reestablishing this corner as obliterated and monumented as shown on the sketch.

This corner position is determined from the existing fence lines and the Township Road.