

CERTIFICATE OF LOCATION OF GOVERNMENT CORNER

Northeast Corner of Section 27, Township 144N., Range 25W., 5th P.M.

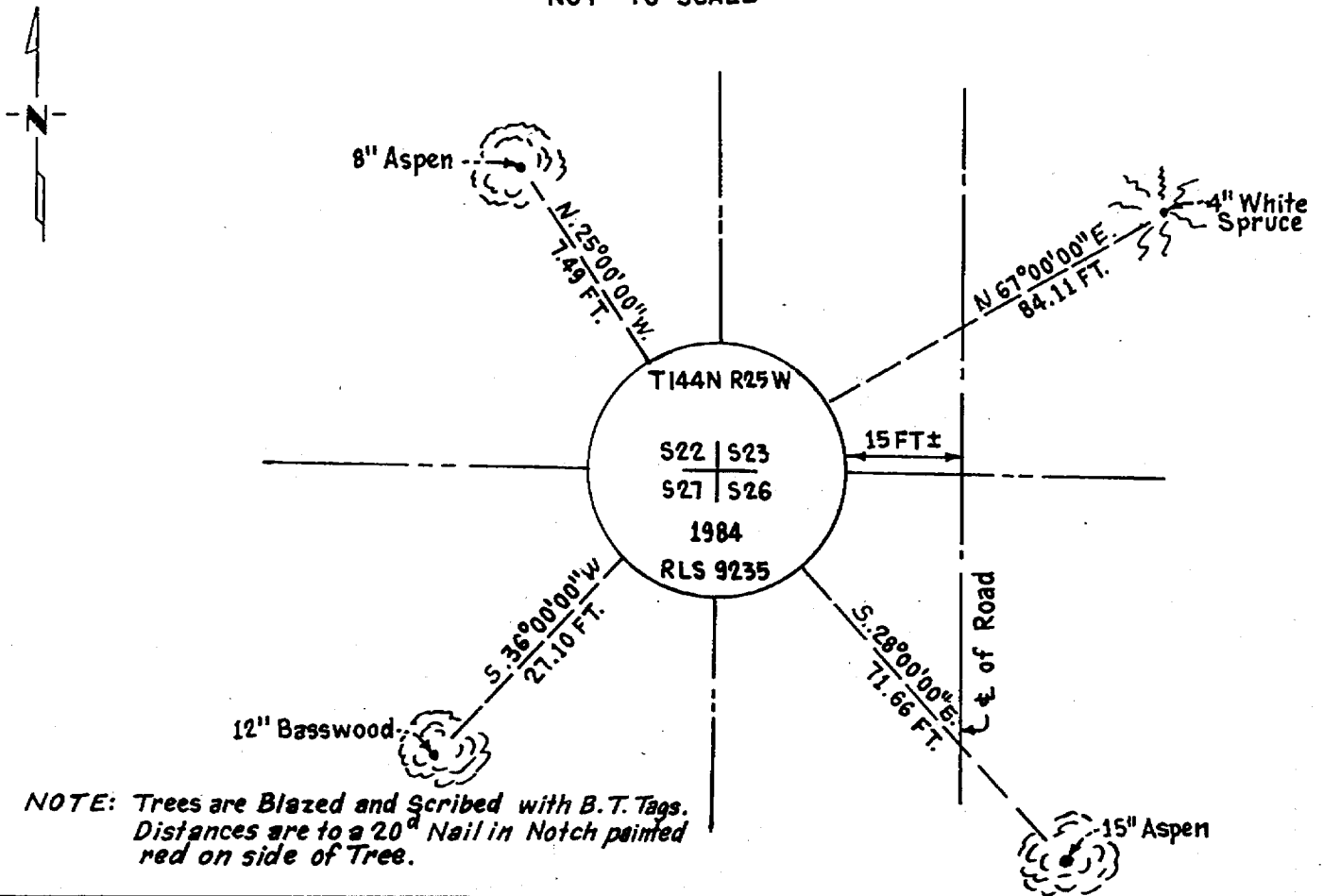
STATE OF MINNESOTA, County of Cass

At the corner location shown on the sketch:

- On _____ found a _____
DATE
- left monument as found, lowered monument, removed monument (explain)
- On 11-9-1984 placed a 2 1/2" (O.D.) by 5 feet long Galvanized Iron Pipe with 3" Brass
DATE
 Cap stamped as shown, up 1.50 feet.

5° EAST Declination

SKETCH OF REFERENCE TIES
NOT TO SCALE



Statement of evidence relative to this corner location is on back of page.

I hereby certify that this document and the data contained herein was prepared by me or under my direct supervision.

James H. Parker 3/23/85
SIGNATURE DATE

Registration No. 9235

- Land Surveyor, Professional Engineer
 County Surveyor, County Engineer

281962
 OFFICE OF THE COUNTY RECORDER
 County of Cass

I hereby certify that this document was filed in the Co. Recorders office at 10:25 A.M. on the 15 day of May A.D., 19 85

County Recorder Claudia Kayler

By MS, Deputy

DOCUMENT NO. 281962

Statement of Evidence:

R17

This corner was originally established in April, 1876, by B.C. Baldwin, Deputy Surveyor. The field notes of that survey are filed in the office of the Secretary of State, St. Paul, Minnesota. Mr. Baldwin's notes state that a post was set to mark the corner and referenced by the following:

- A 5" Aspen that bears N29°E a distance of 10 links [6.60 feet]
- A 6" Balsam that bears S76°E a distance of 18 links [11.88 feet]
- A 10" Aspen that bears S31°W a distance of 27 links [17.82 feet]
- A 8" Birch that bears N75°W a distance of 8 links [5.28 feet]

On June 29, 1984, personnel from Advance Surveying & Engineering Co. made a thorough search for this corner and the above mentioned references but to no avail.

On November 9, 1984, an additional search was made by Advance prior to reestablishing this corner by Double proportionate methods between the East Quarter corner of Section 15 and the Southeast corner of Section 27 and between the Northwest corner of Section 27 and the North Quarter corner of Section 26.