

# CERTIFICATE OF LOCATION OF GOVERNMENT CORNER

East 1/4 Corner of Section 20, Township 144N, Range 25W, 5th P.M.

STATE OF MINNESOTA, County of Cass

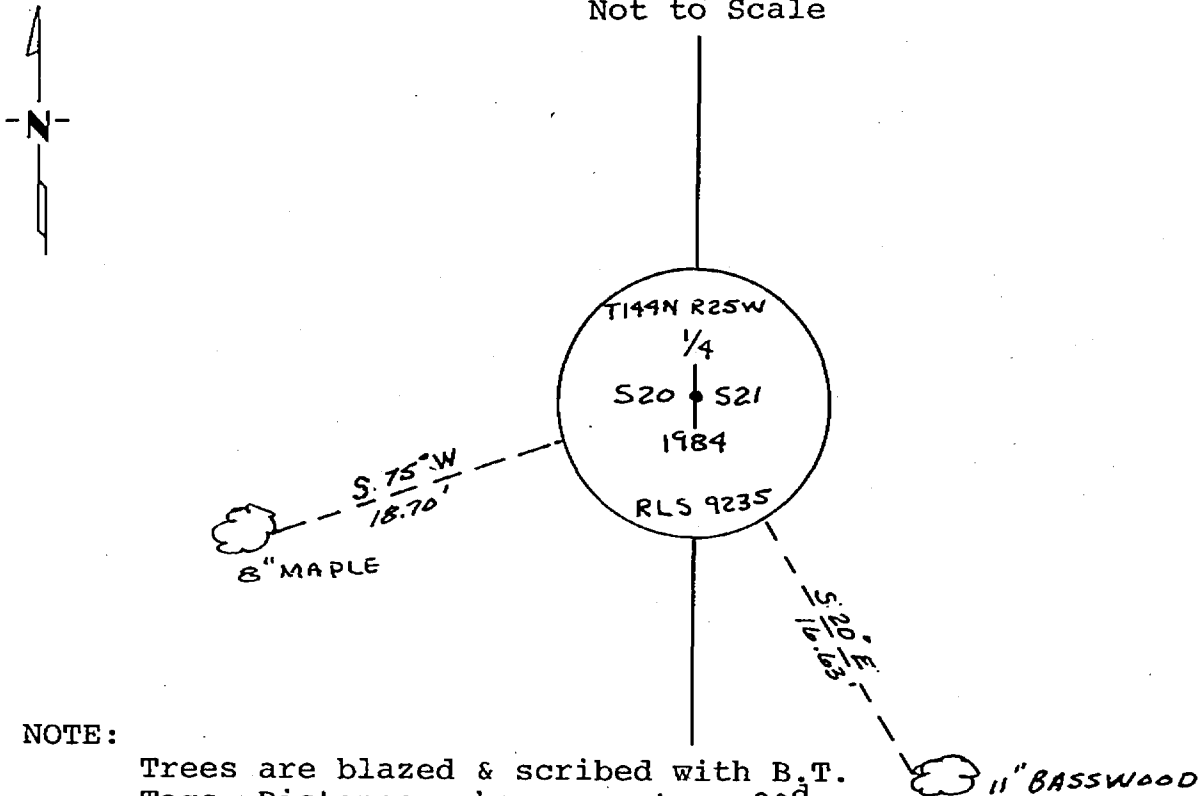
At the corner location shown on the sketch:

- On \_\_\_\_\_ found a \_\_\_\_\_  
DATE
- left monument as found,  lowered monument,  removed monument (explain)
- On 10-24-1984 placed a 2 1/2" (O.D.) X 5 feet long galvanized  
DATE  
iron pipe with 3" Brass Cap up 1.5 feet

5° East declination

SKETCH OF REFERENCE TIES

Not to Scale



NOTE:

Trees are blazed & scribed with B.T. Tags. Distances shown are to a 20<sup>d</sup> nail in notch painted red on side of tree.

Statement of evidence relative to this corner location is on back of page.

I hereby certify that this document and the data contained herein was prepared by me or under my direct supervision

James H. Parker 3/29/85  
SIGNATURE DATE

Registration No. 9235

- Land Surveyor,  Professional Engineer
- County Surveyor,  County Engineer

281950  
OFFICE OF THE COUNTY RECORDER  
County of Cass

I hereby certify that this document was filed in the Co. Recorders office at 9:25 A.M. on the 15 day of May A.D., 19 85

County Recorder Claudia Kayler  
By MS, Deputy

DOCUMENT NO. 281950

Statement of Evidence:

P9

This corner was originally established in April, 1876, by B.C. Baldwin, Deputy Surveyor. The field notes of that survey are filed in the office of the Secretary of State, St. Paul, Minnesota. Mr. Baldwin's notes state that a post was set to mark the corner and referenced by the following:

A 14" Birch that bears N27°W a distance of 13 links [8.58 feet]  
A 6" Sugar that bears S78°E a distance of 13 links [8.58 feet]

On June 29, 1984, personnel from Advance Surveying & Engineering Co. made a thorough search for this corner and the above mentioned references but to no avail. We do find a old U.S.F.S. location tag on a 7" Basswood.

On October 24, 1984, an additional search was made by Advance prior to reestablishing this corner at its "lost" position half way and on line between adjacent section corners and as shown on the sketch.