

CERTIFICATE OF LOCATION OF GOVERNMENT CORNER

West 1/4 Corner of Section 19, Township 144N, Range 25W, 5th P.M.

STATE OF MINNESOTA, County of Cass

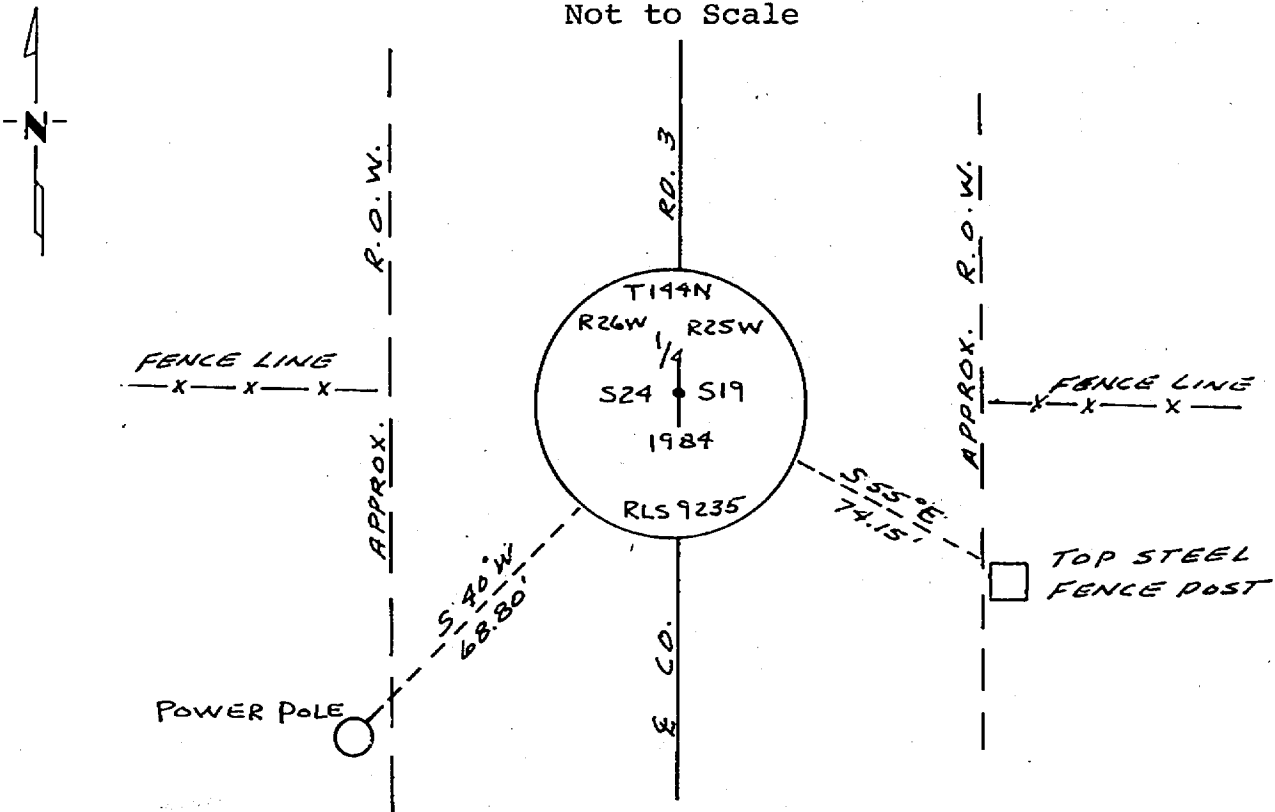
At the corner location shown on the sketch:

- On _____ found a _____
DATE
- left monument as found, lowered monument, removed monument (explain)
- On 10-22-1984 placed a 5/8" x 36" aluminum rod with 3" aluminum
DATE
cap stamped as shown Down .30'

5° East declination

SKETCH OF REFERENCE TIES

Not to Scale



Note:

Distance is from face of power pole 3.15 feet up from ground. No blaze, scribing or tag

Statement of evidence relative to this corner location is on back of page.

I hereby certify that this document and the data contained herein was prepared by me or under my direct supervision.

James H. Park 3/29/85
SIGNATURE DATE

Registration No. 9235

Land Surveyor, Professional Engineer

County Surveyor, County Engineer

OFFICE OF THE COUNTY RECORDER
County of Cass

I hereby certify that this document was filed in the Co. Recorders office at 9:15 A.M. on the 15 day of May A.D., 19 85

County Recorder Claudine Kaylor
By MS, Deputy

DOCUMENT NO. 281948

Statement of Evidence:

P1

This corner was originally established in July 2, 1873, by P.H. Congar, Deputy Surveyor. The field notes of that survey are filed in the office of the Secretary of State, St. Paul, Minnesota. Mr. Congar's notes state that a post was set to mark the corner and referenced by the following:

A 12" Birch that bears S55°E a distance of 10 links [6.60 feet]
A 30" White Pine that bears S69°W a distance of 10 links [6.60 feet]

In March, 1912, John W. Curo notes state that the corner and the Bearing Trees are gone. No mention of resetting corner.

On December 26, 1913, John W. Curo's notes state, that he surveyed the Range Line between Sections 19 & 24 and marked up stations with stakes and red flags. The red flags mark the centerline of new State Road No. 6 and are on the Range Line. He does not mention setting the corner.

On July 20, 1984, personnel from Advance Surveying & Engineering Company, search for this corner position which we determine from our field traverse, but to no avail.

On October 22, 1984, personnel from Advance Surveying & Engineering Company set a monument as shown on the sketch at the centerline of the County Road and on the extension of fence lines. This position determined as being obliterated.