

CERTIFICATE OF LOCATION OF GOVERNMENT CORNER

Northeast Corner of Section 2, Township 137, Range 32, 5th P.M.

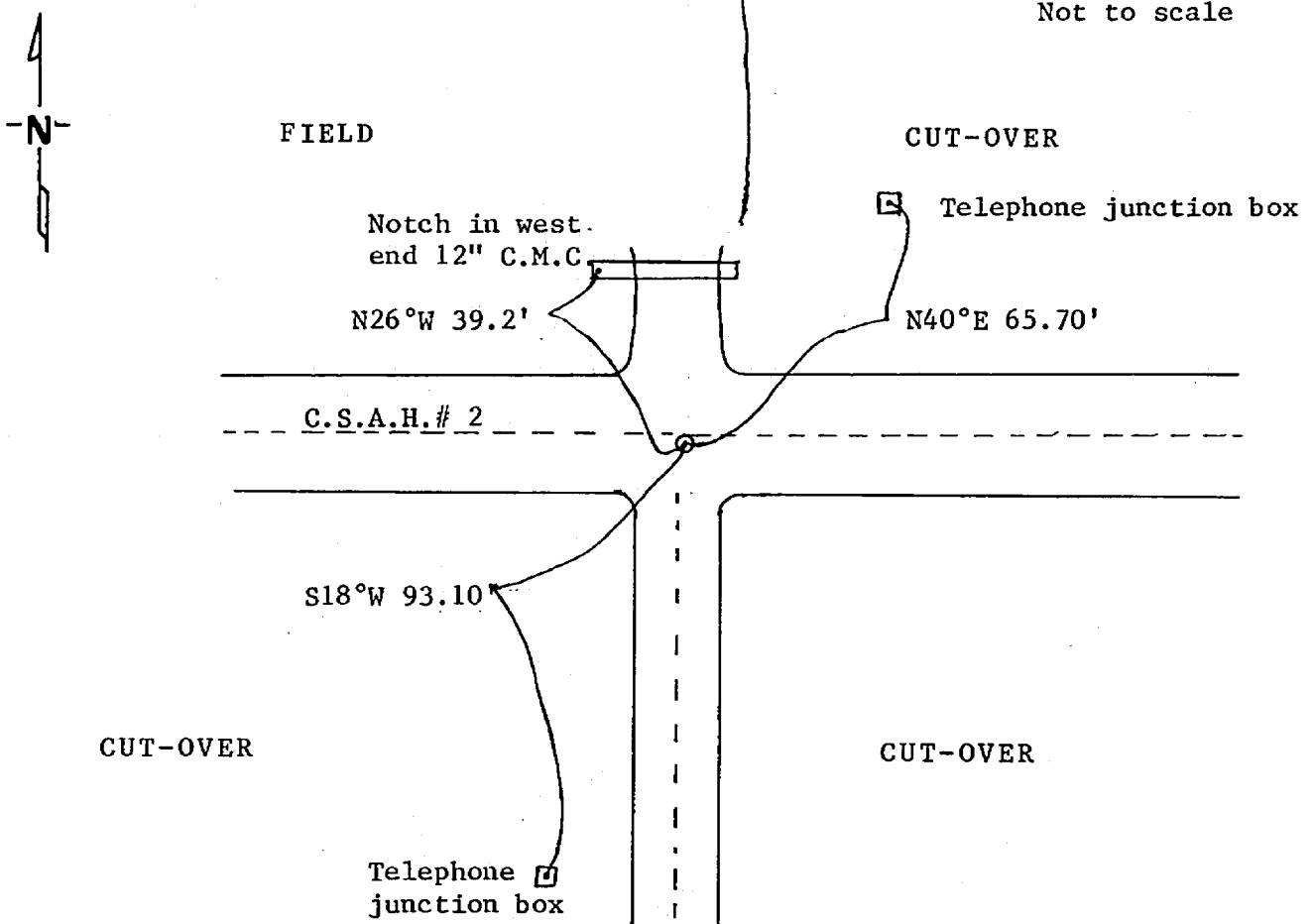
STATE OF MINNESOTA, County of CASS

At the corner location shown on the sketch:

- On 6/22/1983 found a 2" pinched top I.P. down 3.0', 1.3' south of center-
DATE
line C.S.A.H. # 2
- left monument as found, lowered monument, removed monument (explain)
- On 3/22/1985 placed a 4"x20" Cast iron monumnet down 0.1', 2' east of
DATE
centerline twp. rd. south

SKETCH OF REFERENCE TIES

Not to scale



Statement of evidence relative to this corner location is on back of page.

I hereby certify that this document and the data contained herein was prepared by me or under my direct supervision.

Walter E. Cava 5-6-85
SIGNATURE DATE

Registration No. 11395

- Land Surveyor, Professional Engineer
- County Surveyor, County Engineer

281880
 OFFICE OF THE REGISTER OF DEEDS

County of Cass

I hereby certify that this document was filed in the Reg. of Deeds office at 10:30 A .M. on the 13 day of May A.D., 19 85

Register of Deeds Clairine Kayler
 By MS County Recorder, Deputy

DOCUMENT NO. 281880

- 1860 U.S. General Land Office Survey set a wood post for this corner and marked the following bearing trees: 4" Pitch Pine S10½°W 3 lks., 5" Pitch Pine N10°E 29 lks., 4" Pitch S30°E 34 lks., 7" Pitch Pine N43¼°W 22 lks.
- 1919 County Survey Record Book "C" page 159 shows a survey by E.B. Horst. He found a post set by A.W. Moulster from the government B.T.'s.
- 1940 County Survey Record Book "D" pages 244-245 show a survey by John Curo. He set a 2¼x30" steel stake and marked the following bearing trees: 7" Jack Pine N55°E 74.52', 11" Jack Pine S58°32'E 69.15', 12" Jack Pine S50°20'E 46.50', 9" Jack Pine S33°50'W 64.35'
- 1983 Survey Technician Terry Freeman and Forester Dan Marcum found a pinched top 2" I.P., down 3.0', 2' east of centerline road south and 1.3' south of centerline C.S.A.H. #2. Set a 1½" x 30" I.P. over found iron and marked the following bearings: top of telephone junction box N40°E 65.70', top of telephone junction box S18°W 93.10', notch in west end 12" C.M.C. N26°W 39.2'. No other available ties near.
- 1985 On March 22, County Surveyor Walt Curo and Survey Technician Terry Freeman pulled 1½" I.P. set in 1983 and set a 4" x20" cast iron monument over 2" I.P., down 0.1' below road surface. 1940 ties all fall in ditch or plowed field.