

CERTIFICATE OF LOCATION OF GOVERNMENT CORNER

Southwest Corner of Section 18, Township 144 N, Range 25 W, 5th P.M.

STATE OF MINNESOTA, County of Cass

At the corner location shown on the sketch:

On _____ found a _____
DATE

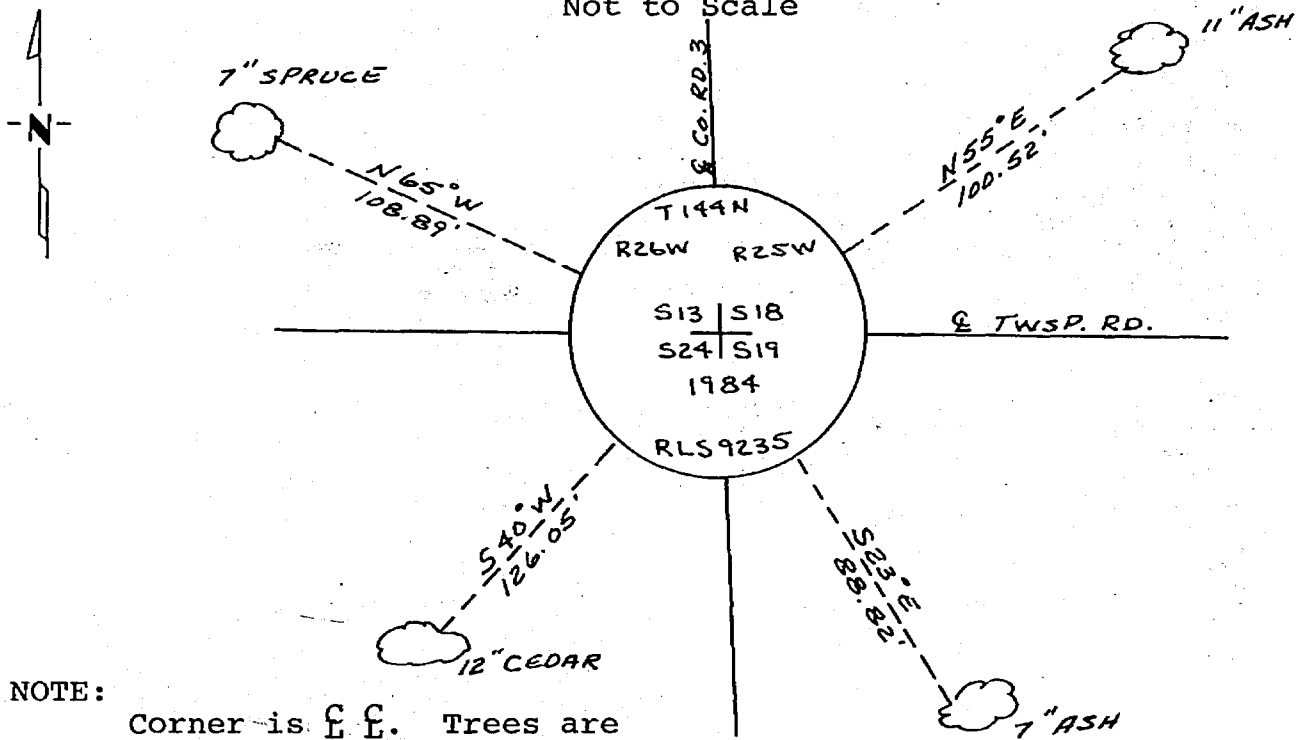
left monument as found, lowered monument, removed monument (explain)

On 10-22-1984 placed a 5/8" x 36" aluminum rod with 3" aluminum
DATE
cap stamped as shown. Down .40'

5° East declination

SKETCH OF REFERENCE TIES

Not to Scale



NOTE:

Corner is C.C. Trees are blazed & scribed with B.T. tag. Distances are shown to a 20^d nail in notch painted red on side of tree.

Statement of evidence relative to this corner location is on back of page.

I hereby certify that this document and the data contained herein was prepared by me or under my direct supervision.

James H. Parker 4/24/85
SIGNATURE DATE

Registration No. 9235

Land Surveyor, Professional Engineer

County Surveyor, County Engineer

OFFICE OF THE COUNTY RECORDER

County of Cass

I hereby certify that this document was filed in the Co. Recorders office at 2:30 P.M. on the 8 day of May A.D., 1985

County Recorder Claudia Kayler

By MS, Deputy

DOCUMENT NO. 281801

Statement of Evidence:

N1

This corner was originally established in July 2, 1873, by P.H. Congar, Deputy Surveyor. The field notes of that survey are filed in the office of the Secretary of State, St. Paul, Minnesota. Mr. Congar's notes state that a post was set to mark the corner and referenced by the following:

A 6" Birch that bears N84°E a distance of 16 links [10.56 feet]
A 5" Cedar that bears S80°E a distance of 18 links [11.88 feet]
A 6" Cedar that bears S55°W a distance of 14 links [9.24 feet]
A 7" Cedar that bears N80°W a distance of 15 links [9.90 feet]

In March, 1912, John W. Curo notes state that he found the Northwest and the Southwest Gov't bearing Trees plainly marked from which he set a stake for the corner position. His notes state that the Bearing Trees to the Northeast and Southeast have been dug out during construction of a logging road. From County Survey Record Book " A ", pages 516 to 518.

On December 26, 1913, John W. Curo's notes state, corner in place. From County Survey Record Book " B ", pages 413 to 417.

In August 1919, John W. Curo's notes state that he established this corner from prior road survey done by him. From County Survey Record Book " C ", page 178.

On March 7, 1935, Engineer with the U.S. Forest Service states that he found a Tamarack post in good condition at centerline - centerline of roads

In 1936, Mr. Hanson, Chief of Party with the U.S.F.S. finds a scribed post.

On May 3, 1984, personnel from Advance Surveying & Engineering Company, U.S.F.S. and the Cass County Surveyors Office search for this corner position which we determine from our field traverse. With the use of Backhoe we dig a 8' by 8' by 5' deep area in roadbed which is approximately the centerline-centerline position of County Roads, but to no avail.

On October 22, 1984, personnel from Advance Surveying & Engineering Company set a monument as shown on the sketch at the centerline - centerline position and being determined as obliterated.