

CERTIFICATE OF LOCATION OF GOVERNMENT CORNER

East 1/4 Corner of Section 17, Township 144N, Range 25W, 5th P.M.

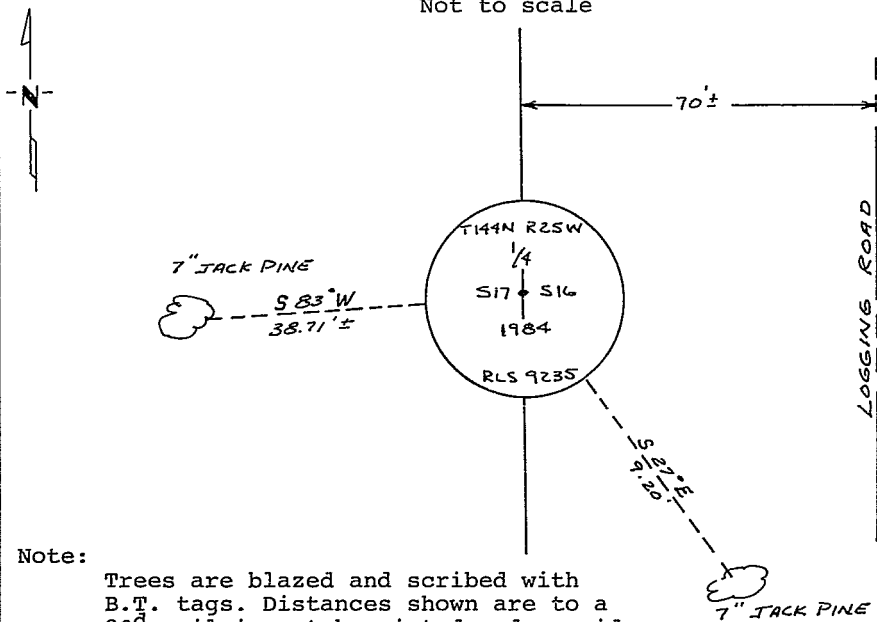
STATE OF MINNESOTA, County of Cass

At the corner location shown on the sketch:

- On _____ found a _____
DATE
- left monument as found, lowered monument, removed monument (explain)
- On 12-12-1984 placed a 2 1/2" X 5 long galvanized iron pipe with
DATE
3" brass cap up 1.5 feet

5° East declination

SKETCH OF REFERENCE TIES
Not to scale



Note:

Trees are blazed and scribed with B.T. tags. Distances shown are to a 20^d nail in notch painted red on side of tree.

Statement of evidence relative to this corner location is on back of page.

I hereby certify that this document and the data contained herein was prepared by me or under my direct supervision.

James H. Park 3/29/85
SIGNATURE DATE

Registration No. 9235

Land Surveyor, Professional Engineer

County Surveyor, County Engineer

281716
OFFICE OF THE COUNTY RECORDER

County of Cass

I hereby certify that this document was filed in the Co. Recorders office at 3:20 P.M. on the 3 day of May A.D., 19 85

County Recorder Claudia Kayler

By MS, Deputy

DOCUMENT NO. 281716

Statement of Evidence:

L9

This corner was originally established in April, 1876, by B.C. Baldwin, Deputy Surveyor. The field notes of that survey are filed in the office of the Secretary of State, St. Paul, Minnesota. Mr. Baldwin's notes state that a post was set to mark the corner and referenced by the following:

A 15" Norway Pine that bears N50°E a distance of 35 links [23.10 feet]
A 15" Norway Pine that bears N14°W a distance of 18 links [11.88 feet]

On June 14, 1984, personnel from Advance Surveying & Engineering Co. made a thorough search for this corner and the above mentioned references but to no avail.

On December 12, 1984, an additional search was made by Advance prior to reestablishing this corner at its "lost" position half way and on line between adjacent Section corners.