

CERTIFICATE OF LOCATION OF GOVERNMENT CORNER

East Quarter _____ Corner of Section 12, Township 144N., Range 25W., 5th P.M.

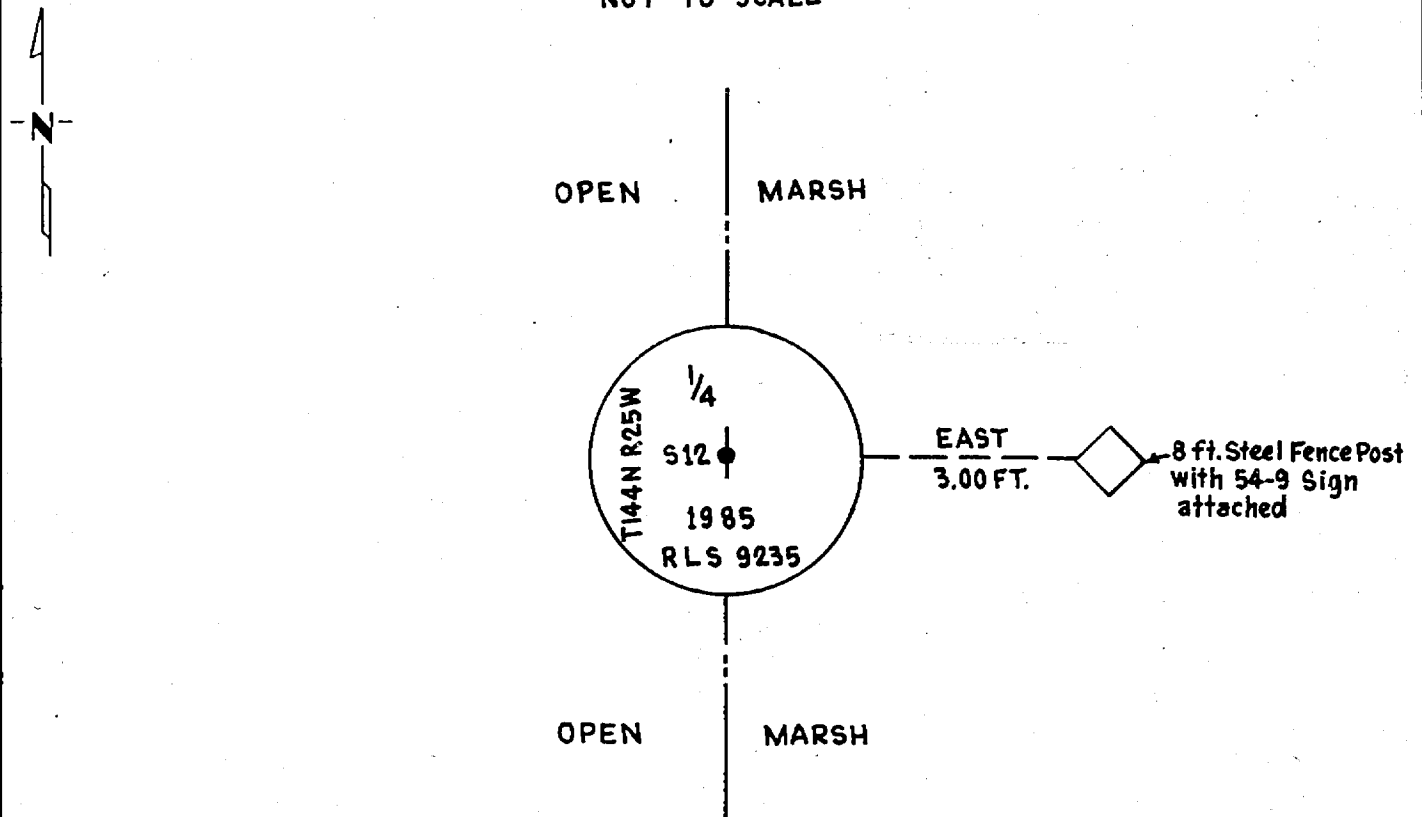
STATE OF MINNESOTA, County of Cass

At the corner location shown on the sketch:

- On _____ found a _____
DATE
- left monument as found, lowered monument, removed monument (explain)
- On 3-6-1985 placed a 5/8" by 8 feet long Aluminum Rod with 3" Aluminum Cap
DATE
stamped as shown up 1.0 foot.

5° EAST Declination

SKETCH OF REFERENCE TIES
NOT TO SCALE



Statement of evidence relative to this corner location is on back of page.

I hereby certify that this document and the data contained herein was prepared by me or under my direct supervision.

James H. Parker 3/29/85
SIGNATURE DATE

Registration No. 9235
 Land Surveyor, Professional Engineer
 County Surveyor, County Engineer

281678
OFFICE OF THE COUNTY RECORDER
County of Cass

I hereby certify that this document was filed in the Co. Recorders office at 4:21 P .M. on the 2 day of May A.D., 1985

County Recorder Claudia Kaylor
By MJ, Deputy

DOCUMENT NO. 281678

Statement of Evidence:

G25

This corner was originally established on May 22, 1867, by G.E. Stuntz, Deputy Surveyor. The field notes of that survey are filed in the office of the Secretary of State, St. Paul, Minnesota. Mr. Stuntz's notes state that a post was set to mark the corner and no trees for reference.

On August 13, 1984, personnel from Advance Surveying & Engineering Co. made a thorough search for this corner but to no avail.

On March 6, 1985, an additional search was made by Advance prior to reestablishing this corner at its "lost" position on line between adjacent section corners and distance prorated between the Northeast corner of Section 1 and the Northeast corner of Section 36.