

CERTIFICATE OF LOCATION OF GOVERNMENT CORNER

South Quarter _____ Corner of Section 9, Township 141N, Range 31W, 5th P.M.

STATE OF MINNESOTA, County of Cass

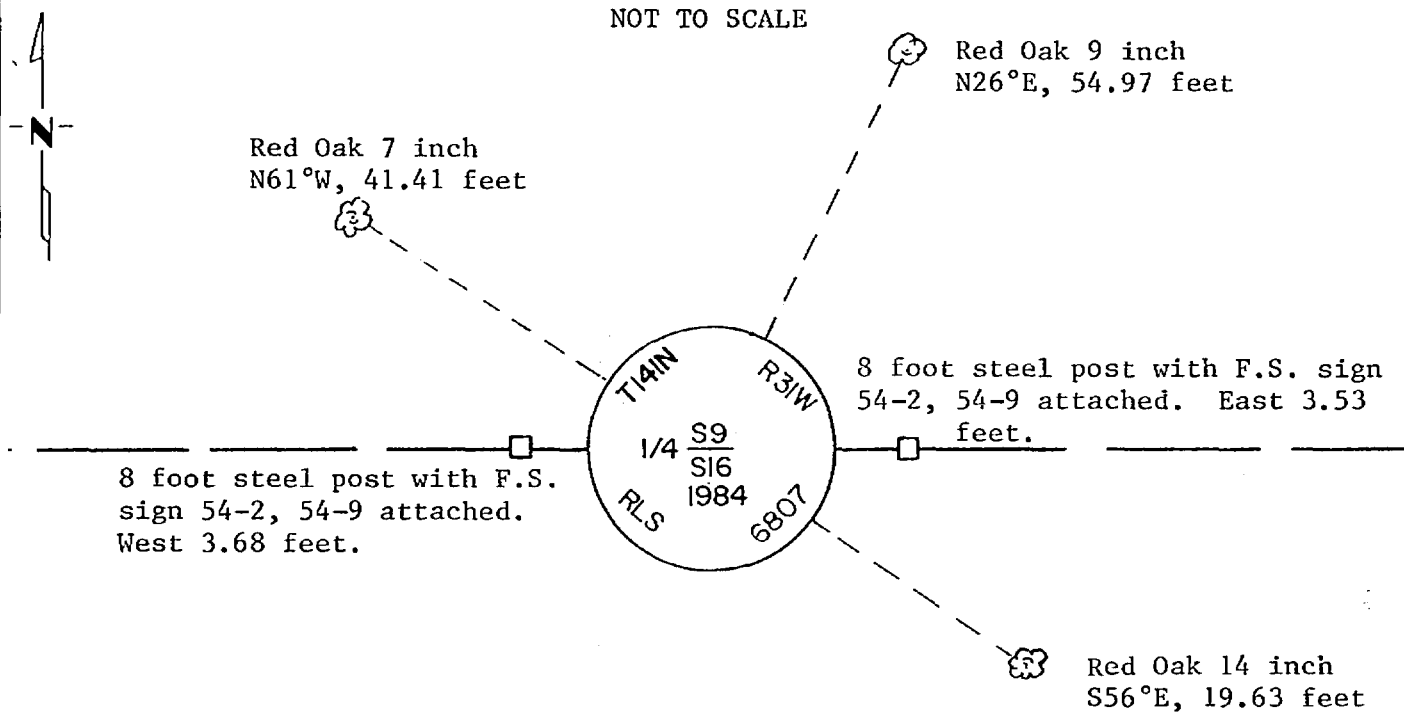
At the corner location shown on the sketch:

- On _____ found a _____
DATE
- left monument as found, lowered monument, removed monument (explain)
- On 3-12-84 placed a 2½ inch (O.D.) by 5 feet long iron pipe with a
DATE
3 inch diameter brass cap, stamped as shown, up to 1.0 feet.

Declination: 6° East

SKETCH OF REFERENCE TIES

NOT TO SCALE



NOTE: All bearing trees are painted red and marked with F.S. sign No. 54-3 with a nail in base, double blazed and scribed.

Statement of evidence relative to this corner location is on back of page.

I hereby certify that this document and the data contained herein was prepared by me or under my direct supervision.

William D. Sherman 2-1-85
SIGNATURE DATE

Registration No. 6807

- Land Surveyor, Professional Engineer
- County Surveyor, County Engineer

280568
OFFICE OF THE COUNTY RECORDER
County of Cass

I hereby certify that this document was filed in the Co. Recorders office at 10:20 A.M. on the 27 day of February A.D., 1985

County Recorder Claudia Kayler

By MS, Deputy

DOCUMENT NO. 280568

Statement of Evidence: South Quarter Corner Section 9, Township 141 North, Range 31 West, 5th Principal Meridian.

- 1873 P.H. Conger, U.S. Deputy Surveyor, set a post for this Quarter corner in his subdivision of the Township between August 5, 1873 and August 30, 1873. As references he scribed:
- | | | | |
|-------------|---------|-------|-----------------------|
| Yellow Pine | 24 inch | N71°E | 22 links (14.52 feet) |
| Yellow Pine | 20 inch | S61°E | 32 links (21.12 feet) |
- 1962 U.S.F.S. Corner Restoration notes indicate no evidence recovered.
- 1984 Kelly M. Booge, under F.S. contract No. 53-6392-4-00996, made a thorough search for physical evidence of this corner on September 14, none was found. He returned on December 3, and searched for evidence on the corner position but no further evidence. He then set a monument in the lost position, with ties as shown on the sketch midpoint and on line between the Southwest and Southeast Section corners of Section 9.

Kelly M. Booge is an employee of Okerman Surveying, Inc.