

CERTIFICATE OF LOCATION OF GOVERNMENT CORNER

North Quarter Corner of Section 8, Township 141N, Range 31W, 5th P.M.

STATE OF MINNESOTA, County of Cass

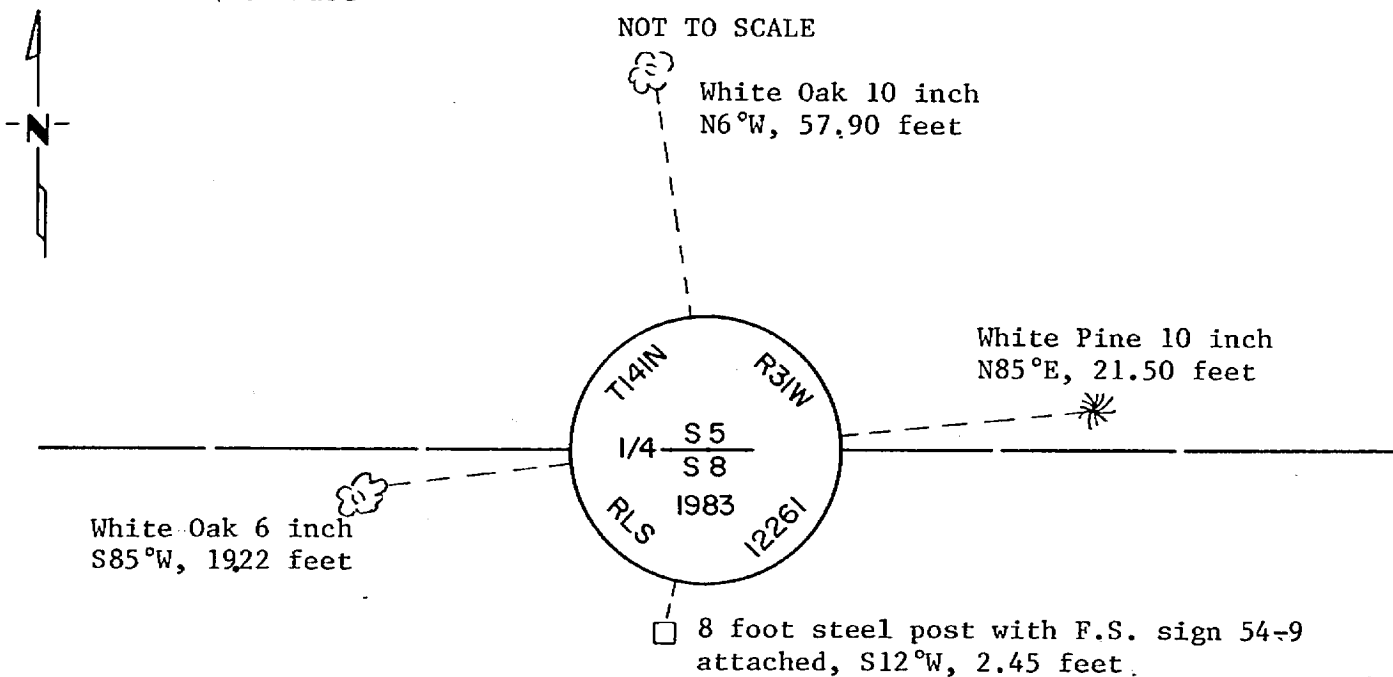
At the corner location shown on the sketch:

- On 8-30-84 found a 2 1/2 inch (O.D.) iron pipe with a 3 inch diameter
brass ^{DATE} cap, stamped as shown
 - left monument as found, lowered monument, removed monument (explain)
- On _____ placed a _____
DATE

Declination: 6° East

SKETCH OF REFERENCE TIES

NOT TO SCALE



NOTE: All bearing trees are painted red and marked with F.S. sign No. 54-3 with a nail in base, double blazed and scribed,

Statement of evidence relative to this corner location is on back of page.

I hereby certify that this document and the data contained herein was prepared by me or under my direct supervision.

William D. O'Kernan 2-1-85
SIGNATURE DATE

Registration No. 6807

- Land Surveyor, Professional Engineer
- County Surveyor, County Engineer

280553
OFFICE OF COUNTY RECORDER

County of Cass

I hereby certify that this document was filed in the Co. Recorder's office at 9:05 A.M. on the 27 day of February A.D., 1985

County Recorder Chondine Kuyler
By ms, Deputy

DOCUMENT NO. 280553

Statement of Evidence: North Quarter Corner Section 8, Township 141 North, Range 31 West, 5th Principal Meridian.

1873 P.H. Conger, U.S. Deputy Surveyor, set a post for this Quarter Corner in his subdivision of the Township between August 5, 1873 and August 30, 1873. As references he scribed:

White Pine	24 inch	N71°W	32 links (21.12 feet)
Jack Pine	8 inch	S78°E	10 links (6.60 feet)

1962 U.S.F.S. Corner Restoration notes indicate no evidence recovered.

1983 M. Hayes, U.S.F.S. made a thorough search for physical evidence of this corner on April 19, none was found. He returned on September 22, and searched for evidence on the corner position but found no further evidence. He then set a monument in the lost position, single proportion based on a mean between the original and the R.R. plat distances and the existing measured distance between the Southwest Section Corner and Meander Corner found on the East side of Fifth Lake. For additional information contact Surveys Section of the U.S.F.S. at Cass Lake. As references to this corner he scribed:

White Oak	6 inch	S85°W	19.22 feet
White Pine	10 inch	N85°E	21.50 feet
White Oak	10 inch	N6°W	57.90 feet
8 foot steel post		S12°W	2.45 feet

1984 Kelly M. Booge, under F.S. contract No. 53-6392-4-00996, made a thorough search for this corner on August 30, 1984 and found the monument and references made by U.S.F.S. in 1983 in good condition as shown on the sketch.

Kelly M. Booge is an employee of Okerman Surveying, Inc.