

CERTIFICATE OF LOCATION OF GOVERNMENT CORNER

NORTHEAST Corner of Section 32, Township 141 N, Range 31 W, 5th P.M.

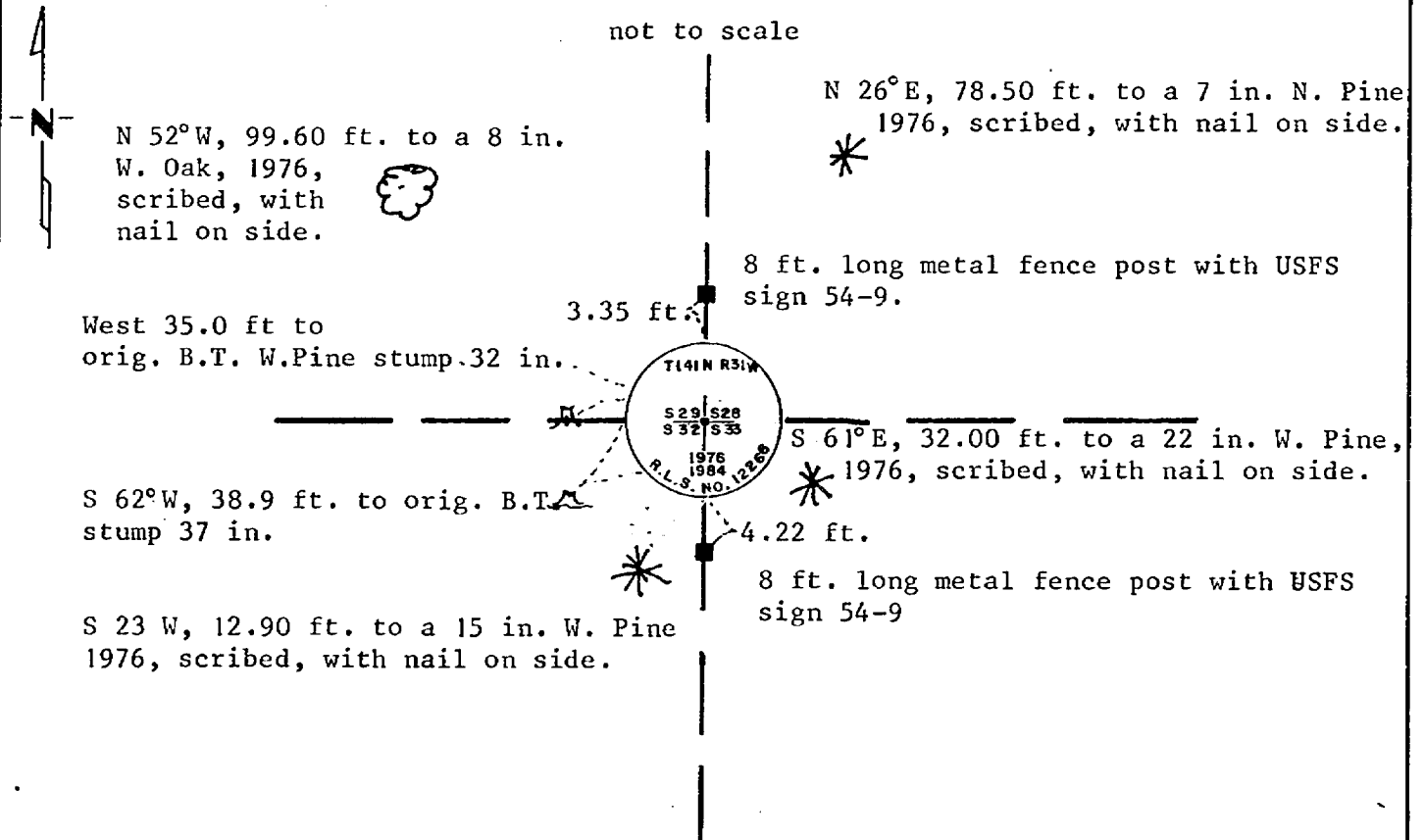
STATE OF MINNESOTA, County of Cass

At the corner location shown on the sketch:

- On 9/27/84 found a 2½ inch by 5 foot galvanized pipe with a 3 inch
DATE
brass cap, stamped as shown, up 18 inches.
- left monument as found, lowered monument, removed monument (explain)
- On _____ placed a _____
DATE

5¼° East declination

SKETCH OF REFERENCE TIES



Statement of evidence relative to this corner location is on back of page.

I hereby certify that this document and the data contained herein was prepared by me or under my direct supervision.

Antony E. Keuch 12/11/84
SIGNATURE DATE

Registration No. 12266

- Land Surveyor, Professional Engineer
- County Surveyor, County Engineer

280492
 OFFICE OF THE REGISTER OF DEEDS
 County of Cass

I hereby certify that this document was filed in the Reg. of Deeds office at 9:45 A.M. on the 25 day of February A.D., 1985

Register of Deeds Cherline Kayler
County Recorder
 By MS, Deputy

DOCUMENT NO. 280492

Statement of Evidence:

NORTHEAST CORNER OF SECTION 32, TOWNSHIP 141 NORTH,
RANGE 31 WEST OF THE 5th PRINCIPAL MERIDIAN.

1873 - The original public Land Survey was run by P.H. Conger. A wood post was set to mark the corner and four bearing trees were recorded as accessories:

| | | | |
|-----|---------|--------|-------------------|
| 24" | W. Pine | S 81°E | 31 links (20.46') |
| 14" | W. Pine | N 81°E | 27 links (17.82') |
| 30" | W. Pine | S 62°W | 59 links (38.94') |
| 28" | W. Pine | West | 53 links (34.98') |

1973 - Curtis R. Krause of the U.S. Forest Service chained from the South and checked original land tie calls, He stated they fit close, also checked land tie to the East to Bass Lake they also fit close. Searched for 4 hours and found four pine stumps that fit the original calls no scribing was visible on any of them. Felt that due to stump combination that they were original pine. Set a 2 inch Ash post at corner location and piled rocks around corner. Robert L. Schneider R.L.S. from Walker used this position for surveys to the North and stated that he believed the corner to be correctly restored.

1976 - Curtis R. Krause of the U.S. Forest Service replaced post with a 2" x 5' galvanized pipe with 3" brass cap stamped. also set corner accessories:

| | | | |
|-----|------------------|--------|-----------|
| 15" | W. Oak | N 23°W | 99.60 ft. |
| 15" | W. Pine | S 23°W | 12.90 ft. |
| 22" | W. Pine | S 61°E | 32.00 ft. |
| 7" | N. Pine | N 26°E | 78.50 ft. |
| 8' | metal fence post | North | 3.30 ft. |

1984 - Kerick Surveying, Inc., Bemidji, Mn. Subdivided Section 32 for the U.S Forest Service. Found the 3 inch stamped brass capped monument set by Krause in 1976. Also found his corner accessories to be o.k. We decided to accept this position based on other surveys done in the area and also for lack of other information regarding this corner. Stamped monument with registration no. 12266 and the year. as appears on this certificate.