

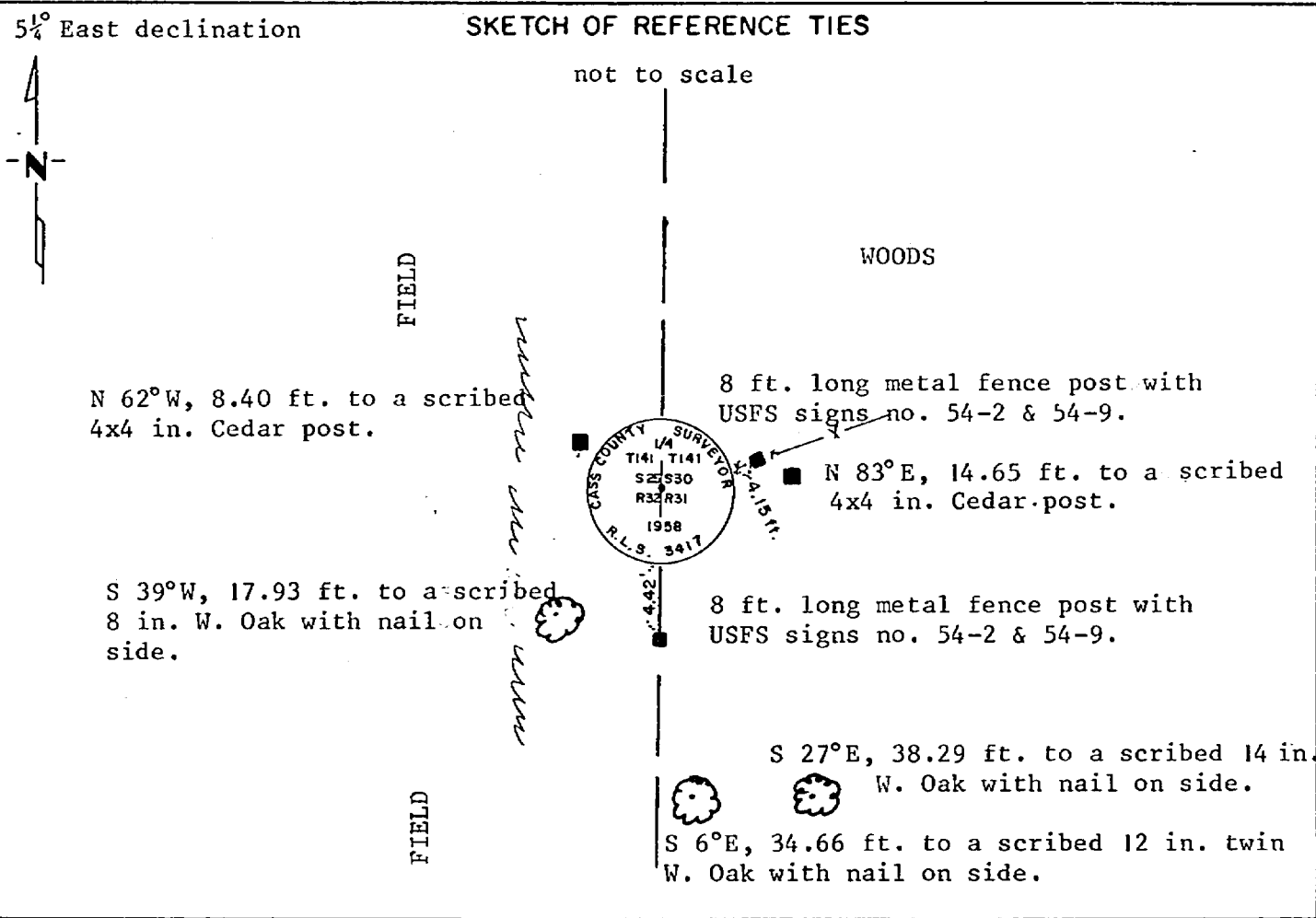
CERTIFICATE OF LOCATION OF GOVERNMENT CORNER

WEST QUARTER Corner of Section 30, Township 141 N, Range 31 W, 5th P.M.

STATE OF MINNESOTA, County of Cass

At the corner location shown on the sketch:

- On 8/28/84 found a 2½ inch by 5 foot long galvanized pipe with a 3 inch brass cap, stamped as shown, up 18 inches.
DATE
- left monument as found, lowered monument, removed monument (explain)
- On _____ placed a _____
DATE



Statement of evidence relative to this corner location is on back of page.

I hereby certify that this document and the data contained herein was prepared by me or under my direct supervision.

Anthony E. Keich 12/10/84
SIGNATURE DATE

Registration No. 12266

Land Surveyor, Professional Engineer

County Surveyor, County Engineer

280486

OFFICE OF THE REGISTER OF DEEDS
 County of Cass

I hereby certify that this document was filed in the Reg. of Deeds office at 9:15 A .M. on the 25 day of February A.D., 1985

Register of Deeds Cherline Kayler
 By MS, Deputy

DOCUMENT NO. 280486

Statement of Evidence:

WEST QUARTER CORNER OF SECTION 30, TOWNSHIP 141 NORTH,
RANGE 31 WEST OF THE 5th PRINCIPAL MERIDIAN.

1871 - The original Public Land Survey was run by G.R. Stuntz. A wood post was set to mark the corner and two bearing trees were recorded as accessories:

8" Y. Pine N 85°E 14 links (9.24')

9" W. Pine S 55°W 35 links (23.1')

1921 - Elmer B. Horst Deputy Cass County Surveyor subdivided Section 30 found no evidence of original survey set a 2" x 48" boiler flue for corner at lost position. Cass County Surveyor's Record Book C, page 453 and 456.

1958 - Harold Curo Cass County Surveyor found the 2" x 48" boiler flue set by Horst in 1921 accepted this position and replaced this monument with a stamped 3 inch brass capped monument and set three new accessories:

Certificate filed 3/22/60 document # 10, in book of Corner Certificates in Cass County Recorder's office.

5" Elm S 26°39' E 38.40 ft.

4" x 4" Cedar post N 82°30' E 14.65 ft.

4" x 4" Cedar post N 62°09' W 8.40 ft.

1963 - R.H. McDonald found 3 inch brass cap 1958 monument and accessories.

1984 - Kerick Surveying, Inc., Bemidji, MN, subdivided Section for the U.S. forest Service. Found the 3 inch stamped brass capped monument set by Curo in 1958. accepted this monument as found and set new accessories that appear on this certificate.