

CERTIFICATE OF LOCATION OF GOVERNMENT CORNER

S- 1/4 and MC Corner of Section 34, Township 139, Range 29, 5 P.M.

STATE OF MINNESOTA, County of CASS

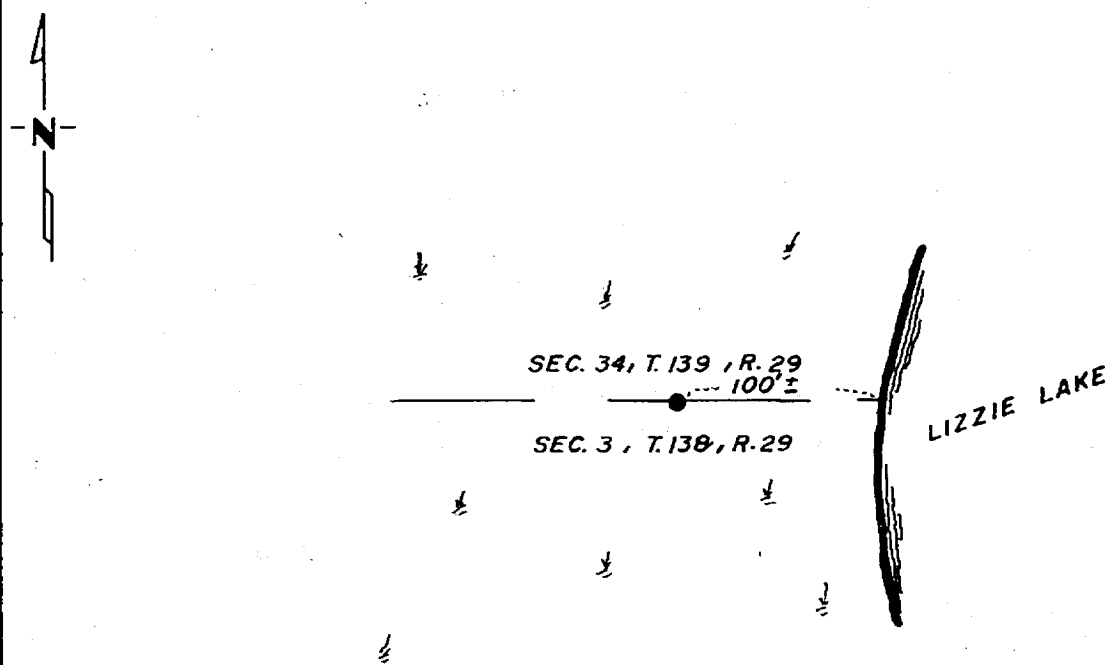
At the corner location shown on the sketch:

On 12-1984 found a 2" x 5' iron pipe in a mound with a 6'
DATE diameter trench around it.

left monument as found, lowered monument, removed monument (explain)

On _____ placed a _____
DATE

SKETCH OF REFERENCE TIES



Statement of evidence relative to this corner location is on back of page.

I hereby certify that this document and the data contained herein was prepared by me or under my direct supervision.

Walter E. Carr 2-5-85
SIGNATURE DATE

Registration No. 11395

Land Surveyor, Professional Engineer

County Surveyor, County Engineer

280478
OFFICE OF THE REGISTER OF DEEDS
County of Cass

I hereby certify that this document was filed in the Reg. of Deeds office at 1:30 P.M. on the 22 day of February A.D., 19 85

Register of Deeds Claudia Kayler

By MS Deputy

DOCUMENT NO. 280478

Statement of Evidence:

IN 1863 A POST WAS SET IN THE ORIGINAL SURVEY WITH THE FOLLOWING BT'S, TAMARACK 8" NORTH 10 WEST 162 LKS 106.92 FEET.

IN SEPTEMBER OF 1929, JOHN W. CURO A REGISTERED LAND SURVEYOR FOUND THE STUMP OF THE OLD NORTHWEST BT FROM WHICH HE SET A 2" PIPE 5 FEET LONG WITH 6 FOOT MOUND OF BOG 3 FEET HIGH WITH TRENCH CUT AT THE BASE.

IN DECEMBER OF 1984, WALTER E. CURO A REGISTERED LAND SURVEYOR AND KEN METCALF FIND THE 2" IRON PIPE IN THE BOG WITH THE 6 FOOT DIAMETER TRENCH STILL VISIBLE. THE MOUND IS ABOUT 1 FOOT HIGH. THERE ARE NO TREES REASONABLY CLOSE FOR NEW BT'S.