

# CERTIFICATE OF LOCATION OF GOVERNMENT CORNER

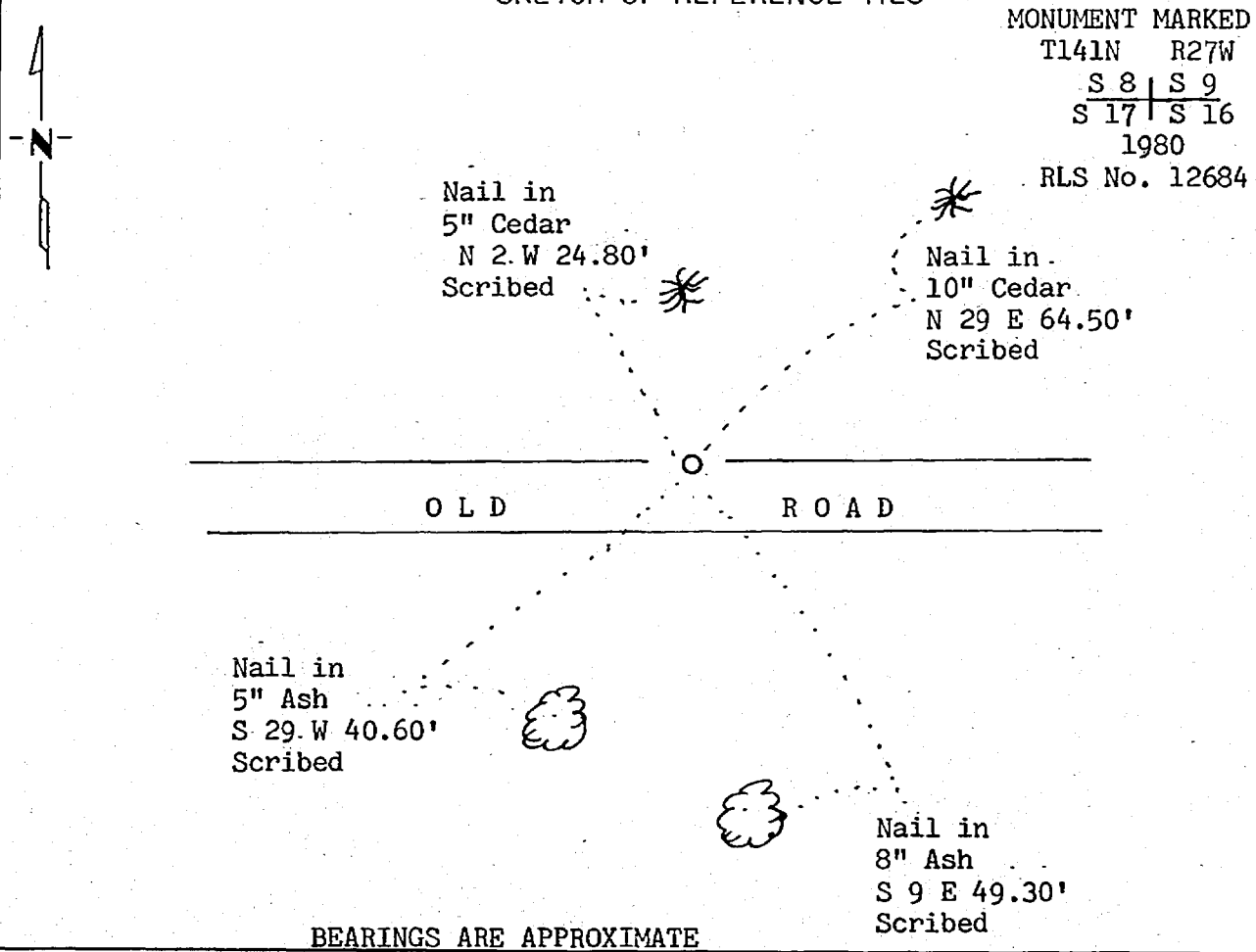
NORTHEAST Corner of Section 17, Township 141, Range 27, 5th P.M.

STATE OF MINNESOTA, County of CASS

At the corner location shown on the sketch:

- On 9/4/80 found a GLO iron pipe and County capped iron pipe.  
DATE
- left monument as found,  lowered monument,  removed monument (explain)
- On 9/4/80 placed a 2" galvanized iron pipe with a 3" marked brass cap.  
DATE

### SKETCH OF REFERENCE TIES



Statement of evidence relative to this corner location is on back of page.

I hereby certify that this document and the data contained herein was prepared by me or under my direct supervision.

Amy H. Stevenson 9-15-82  
SIGNATURE DATE

Registration No. 12684

Land Surveyor,  Professional Engineer  
 County Surveyor,  County Engineer

279230

OFFICE OF THE COUNTY RECORDER  
County of Cass

I hereby certify that this document was filed in the Co. Recorders office at 9:25 A.M. on the 5 day of Dec. A.D., 1984

County Recorder Clouline Kaylor  
By MS, Deputy

DOCUMENT NO. 279230

Statement of Evidence:

- 1874 U.S. General Land Office survey set wood post for this corner and marked the following bearing trees: 10" Tam. S 40 E 8 links, 14" Tam. S 56 W 16 links, 8" Tam. N 57 W 17 links, and 7" Cedar S 48 E 8 links.
- 1919 U.S. General Land Office dependent resurvey found the corner marked by a 2" iron pipe set by County Surveyor from original bearing trees in east-west road. Bearing trees have now been destroyed by road building. An iron pipe with a marked brass cap was set to mark the corner. The following bearing trees were marked: 8" Cedar N 29-30 E 111 links, 12" Cedar S 14 E 51 links, 6" Cedar S 27-30 W 63 links, and 10" Cedar N 8 W 72 links.
- 1936 U.S. Forest Service records show the following: CCC notes show corner in center of road. One bearing tree and two stumps were found.
- 1980 U.S. Forest Service technician C. Krause found the corner monumented with a GLO iron pipe with cap missing and 2" galvanized capped iron pipe (County ) at north edge of old road. The following bearing trees were found: Well rotted Cedar stump N 29 E 73.3', 4' high Cedar stub S 14 E 33.7', and 15" Cedar windfall N 8 W 47.5' with scribing. Four new bearing trees were marked and are shown on this certificate. The two pipes were replaced with a 2" galvanized iron pipe with a 3" marked brass cap. The two old pipes were reset alongside. A steel sign post was set 3.4' west of the corner.
- 1982 County Surveyor's Records in the Recorder's Office were checked and no resurvey information was found on this corner.
- 1982 Analysis of the above data indicate that the location of this Government corner has been perpetuated. I accepted the monument as marking the corner location as when set in 1919 by the GLO resurvey based on bearing tree evidence.