

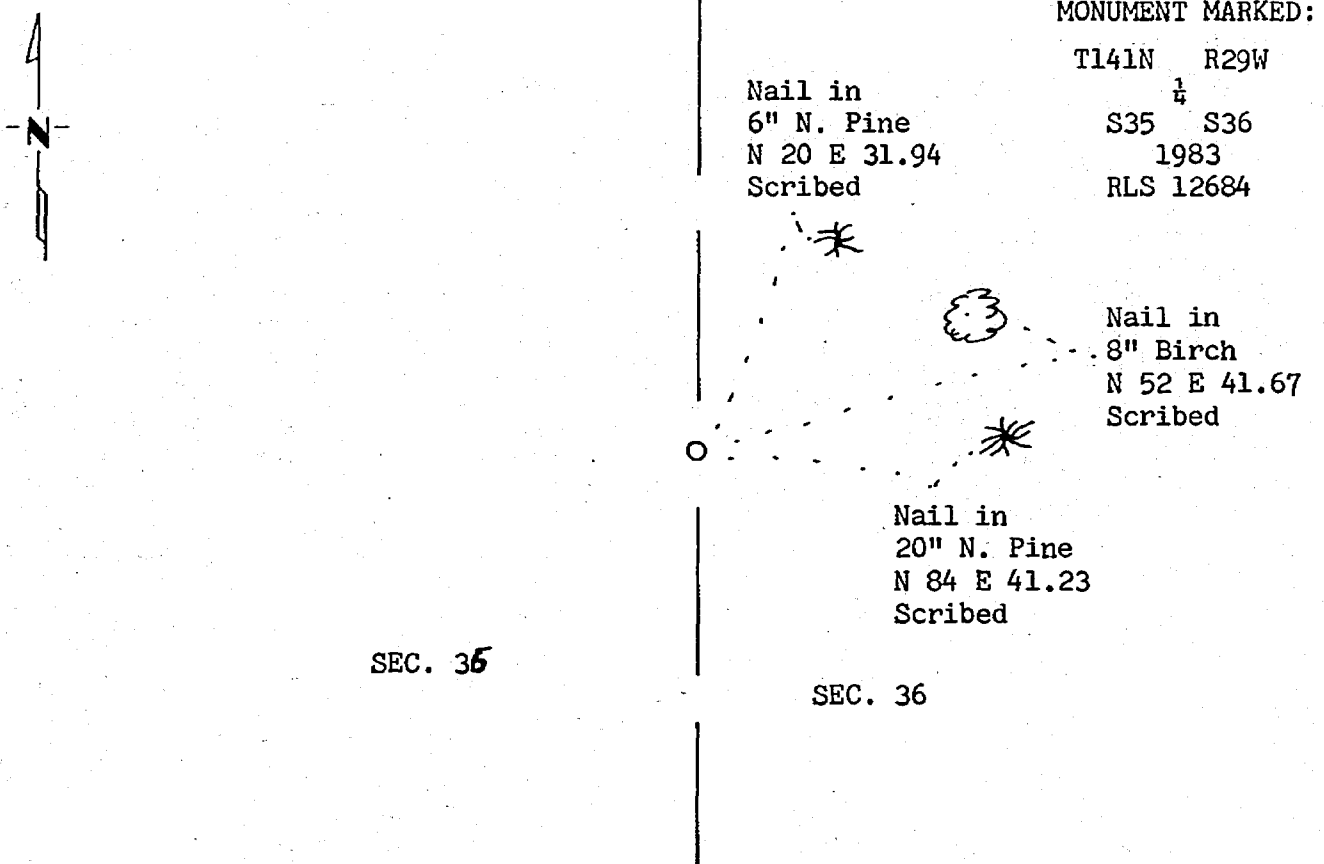
CERTIFICATE OF LOCATION OF GOVERNMENT CORNER

EAST QUARTER Corner of Section 35, Township 141, Range 29, 5th P.M.
STATE OF MINNESOTA, County of CASS

At the corner location shown on the sketch:

- On _____ found a _____
DATE
- left monument as found, lowered monument, removed monument (explain)
- On 6/18/83 placed a 2" x 60" galvanized iron pipe with a 3" marked
DATE brass cap at the lost position.

SKETCH OF REFERENCE TIES



BEARINGS ARE APPROXIMATE MAGNETIC

Statement of evidence relative to this corner location is on back of page.

I hereby certify that this document and the data contained herein was prepared by me or under my direct supervision.

Samy H. Stevan 6/20/83
SIGNATURE DATE

Registration No. 12684
 Land Surveyor, Professional Engineer
 County Surveyor, County Engineer

279157
OFFICE OF THE COUNTY RECORDER
County of Cass

I hereby certify that this document was filed in the Co. Recorders office at 9:25 A.M. on the 3 day of Dec A.D., 1984

County Recorder Claudia Keyler
By MS, Deputy

DOCUMENT NO. 279157

Statement of Evidence:

- 1873 U.S. General Land Office survey set wood post for this corner and marked the following bearing trees: 24" W. Pine S 80 W 38 links and 6" Soft Maple N 40 E 21 links.
- 1982 County Surveyor's Records in the Recorder's Office were checked and no resurvey information was found on this corner.
- 1982 U.S. Forest Service office in Cass Lake was contacted for information. Their records show technician J. Ekstrom searched for corner in 1964 and found no evidence.
- 1983 I ran a traverse between the NE corner of Sec. 36 and the computed SE corner of Sec. 35 on the standard parallel which falls in a pond. Distance measured was 5763.15 feet. The original GLO distance was given as 80 chains (5280'). Because of the great difference in distance, it is evident that the original GLO survey was not run as stated in the notes. The 1873 GLO notes do not mention the SE corner being in the pond as noted in the GLO standard parallel notes. The 1873 notes call for a pond 1.00 chain north of the quarter corner. A straight line falls east of a pond. A search area for the corner was determined at 2640' north of the standard parallel from the approximate witness corner for the SE corner. This roughly fit the call to the pond. Approximately 8 very large W. Pine stumps were found in this area. All were very badly rotted and no positive evidence of a bearing tree scar or scribing was found. I believe the original corner was probably south of the pond and approximately 100 to 200 feet west of a straight line. However, not finding adequate evidence to support this theory, I had to consider the corner lost. Therefore, I set the corner by single proportion method (midway and on line between the NE corner and the computed SE corner). A 2" x 60" galvanized iron pipe with a 3" marked brass cap was set for the corner. A steel sign post was set 2.7 feet south of the corner. Three new bearing trees were taken as shown on this certificate.