

CERTIFICATE OF LOCATION OF GOVERNMENT CORNER

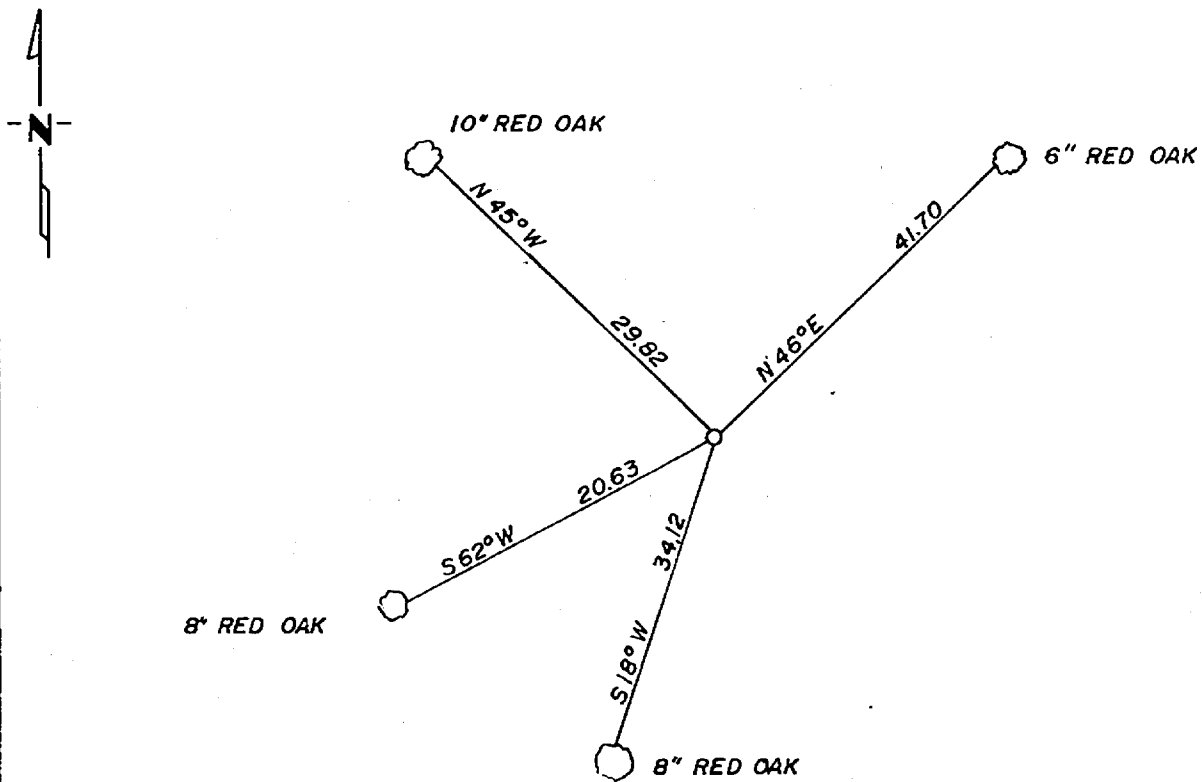
SE Corner of Section 2, Township 139, Range 30, 5th P.M.

STATE OF MINNESOTA, County of Cass

At the corner location shown on the sketch:

- On 10-9-84 found a rotted square oak post in the center of
DATE
a rock pile
- left monument as found, lowered monument, removed monument (explain)
- On 10-9-84 placed a 2" square cass county monument with
DATE
aluminum cap in place of the oak post

SKETCH OF REFERENCE TIES



not to scale

Statement of evidence relative to this corner location is on back of page.

I hereby certify that this document and the data contained herein was prepared by me or under my direct supervision.

Walter E. Curcio 10-30-84
SIGNATURE DATE

Registration No. 11395

Land Surveyor, Professional Engineer

County Surveyor, County Engineer

278540
 OFFICE OF THE REGISTER OF DEEDS
 County of Cass

I hereby certify that this document was filed in the Reg. of Deeds office at 10:30 A .M. on the 31 day of Oct, A.D., 19 84

Register of Deeds Clouline Kayler
County Recorder

By MS, Deputy

DOCUMENT NO. 278540

Statement of Evidence:

In 1984 Walter E. Curo found a rock pile and a squarded and painted oak post rotted off at ground level. There are several badly burned and rotted pine stumps with no markings on them. The distances to the South Quarter corner and the East Quarter corner fit real close to government distance.

We set a 2 inch square x 36 inch monument with aluminum cap for the Southeast corner of Section 2 and we marked new bearing trees as shown on the front.