

# CERTIFICATE OF LOCATION OF GOVERNMENT CORNER

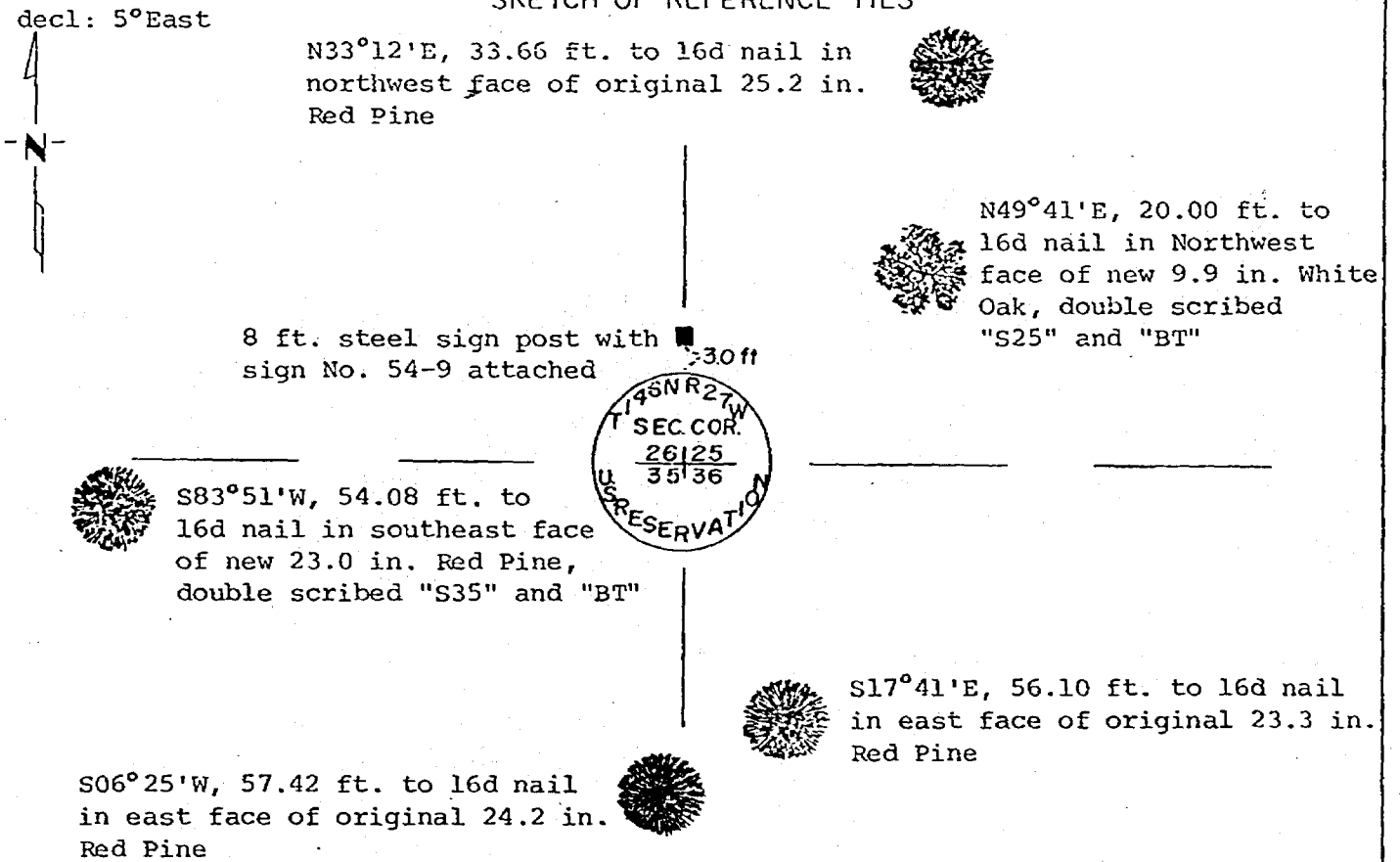
Southeast Corner of Section 26, Township 146N, Range 27W, 5th P.M.

STATE OF MINNESOTA, County of Cass

At the corner location shown on the sketch:

- On 8/13/82 found a 6 in. x 6 in. concrete monument with 3 in. brass cap  
DATE  
stamped as shown.
  - left monument as found,  lowered monument,  removed monument (explain)
- On \_\_\_\_\_ placed a \_\_\_\_\_  
DATE

### SKETCH OF REFERENCE TIES



All bearing trees are marked with 60d spike in the base blaze, & painted with red enamel

Statement of evidence relative to this corner location is on back of page.

I hereby certify that this survey, plan or report was prepared by me or under my direct supervision and that I am a duly Registered Land Surveyor under the laws of the State of Minnesota.

K.H. With

Date 4-25-83 Registration No. 14677

276896  
OFFICE OF THE COUNTY RECORDER  
County of Cass

I hereby certify that this document was filed in the Co. Recorders office at 11:30 A .M. on the 9 day of August A.D., 1984

County Recorder Claudine Kayler  
By MS Deputy

DOCUMENT NO. 276896

Statement of Evidence:

Southeast Corner of Section 26, Township 146 North,  
Range 27 West of the 5th Principal Meridian

This corner was originally set on January 3, 1874, by P. H. Conger, Deputy Surveyor. His notes indicate that a post was set and a 13 inch diameter Norway Pine that bears South 17° East, a distance of 85 links (56.10 feet), a 14 inch diameter Norway Pine that bears South 07° West, a distance of 87 links (57.42 feet), an 8 inch diameter Norway Pine that bears North 31° East, a distance of 51 links (33.66 feet), and an 8 inch diameter Jack Pine that bears North 54° West, a distance of 74 links (48.84 feet) were marked for references.

U.S. Army Corps of Engineers field notes by Henry F. Phund, page 26 of Book Al-293, dated January 31, 1900, on file and of record in the Corps of Engineers' archives, St. Paul, Minnesota, state they found the bearing trees for the corner of Sections 25, 26, 35, and 36, Township 146 North, Range 27 West. The notes go on to state that a 13 inch Norway Pine that bears South 17° East, a distance of 85 links (56.10 feet), a 14 inch diameter Norway Pine that bears South 07° West, a distance of 87 links (57.42 feet), and an 8 inch diameter Norway Pine that bears North 31° East, a distance of 51 links (33.66 feet) were "spotted" (marked in some manner). The notes state "cor comes in Berm" but makes no mention of finding a post as is the case with other notes in the book concerning other corners. This leads one to speculate that the post did not exist at this time. The notes do not indicate they set anything in this position.

Page 2 of Book Al-472, dated December 5, 1917, by Charles Murray, U.S. Army, Corps of Engineers, started a survey at the corner of Sections 25, 26, 35, and 36, Township 146 North, Range 27 West. At that time, the notes indicate 3 original bearing trees were standing: A Norway Pine that bears South 17° East, a distance of 85 links (56.10 feet); A Norway Pine that bears South 07° West, a distance of 87 links (57.42 feet); And a Norway Pine that bears North 31° East, a distance of 51 links (33.66 feet). The notes further state "found post set 5' So. and 2' West of correct point for cor. Set cor".

Page 53 of Book Al-475, dated August 8, 1929, by Brownell, U.S. Army Corps of Engineers, states the section corner consists of a 1 inch iron pin. Page 55 of the same notebook indicates a concrete monument was set at this location between August 20 and August 26, 1929.

Civilian Conservation Corps notes, on file and of record in the Supervisor's Office, Chippewa National Forest, Cass Lake, Minnesota, by Balke and dated 1936, indicate corner to be set by the U.S. Army and referenced by a 24 inch diameter Norway Pine that bears South 22° East, a distance of 0.80 chains (52.80 feet), a 24 inch diameter Norway Pine that bears South 05° West, a distance of 0.81 chains (53.46 feet), and a 24 inch diameter Norway Pine that bears North 32° East, a distance of 0.58 chains (38.28 feet).

U.S. Forest Service Land Corner Record (#5680-11) by A. B. Wells and dated 1962 indicate a "Brass cap set in concrete - set by U.S. Engineers" was found along with a 23 inch diameter Norway Pine that bears South 18° East, a distance of 56.4 feet, and a 23 inch diameter Norway Pine that bears South 07° West, a distance

(Continued on next page)

## CERTIFICATE OF LOCATION OF GOVERNMENT CORNER

Southeast Corner of Section 26, Township 146N, Range 27W, 5th P.M.

STATE OF MINNESOTA, County of Cass

of 57.6 feet and a 24 inch diameter Norway Pine that bears North 33° East, a distance of 33.66 feet. The brass cap was stamped as indicated on the sketch.

A November 1968 survey by the U.S. Army Corps of Engineers, found a concrete monument with a disc at the Southwest Corner of Section 25 (Southeast Corner of Section 26) and tied it into NGS Horizontal Control Station "Winnie 1934".

On August 13, 1982, Glenn Kosenko and I found the 6 inch x 6 inch U.S. Army, Corps of Engineers, concrete monument with a 3 inch brass disc stamped as shown in the sketch, with a 1.25 inch iron rod at the northwest corner of the monument. A 3 inch x 3 inch pyramidic reinforced concrete post and rotted off wooden post were also found by the monument. From the Corps monument we found: A 23.3 inch Norway Pine, with blazes, axe marks, and reverse scribe visible, that bears South 17°41' East, a distance of 56.39 feet (85.4 links) to the face of the base blaze; A 24.2 inch Norway Pine, with rotting fire scarred blazes and axe marks but no scribing visible, that bears South 06°25' West, a distance of 57.54 feet (87.2 links) to the face of the base blaze; And a 25.2 inch Norway Pine, with blazes, axe marks, and scribing visible, that bears North 33°12' East, a distance of 33.73 feet (51.1 links). The basis of bearings is a gyro orientation taken by Rob Fallon and myself on September 2, 1982, with a Fennel K.T. 3 North Seeking Gyro, serial number 148534.

On August 24, 1982, Glenn Kosenko and I dug in the vicinity, where a post was indicated in the 1917 Corps notes. At a bearing of South 26°24' West, and a distance of 4.98 feet, from the concrete monument, we found a 1.25 inch x 42 inch iron rod, the bottom of a glass bottle, and a 0.75 inch x 5 inch metal ring (around the rod), just under the surface. We also found a very well rotted post lying in a northwesterly direction. It was roughly 2 inch in diameter and disintegrated when touched. Digging down to 0.8 feet, into mineral soil, we found a square patch of discolored soil oriented in the diagonal directions. As we continued to remove soil, the discoloration tapered to a point at a depth of 2.2 feet. No solid pieces were found. The bearings and distances from this location are South 21°26' East, a distance of 52.93 feet (80.2 links); South 04°35' West, a distance of 52.89 feet (80.1 links), and North 32°20' East, a distance of 38.68 feet (58.6 links) to the 3 original bearing trees. As can be seen, they do not fit the original calls at all.

I do not feel the post found by the U.S. Army Corps of Engineers in their 1917 survey was the original. I base this conclusion on the fact that when the Corps of Engineers visited this corner in January of 1900, they make no mention of finding a post as they do at other corners in the same and other townships. Their notes specifically state so when they did find posts. Secondly, the 3 ties pull together so well that it seems unlikely that any error was made by the original surveyor. Based on this evidence, I feel the Corps of Engineers concrete Monument is in the best location of the original corner.