

# CERTIFICATE OF LOCATION OF GOVERNMENT CORNER

East Quarter \_\_\_\_\_ Corner of Section 3, Township 139, Range 29, 5th P.M.

STATE OF MINNESOTA, County of Cass

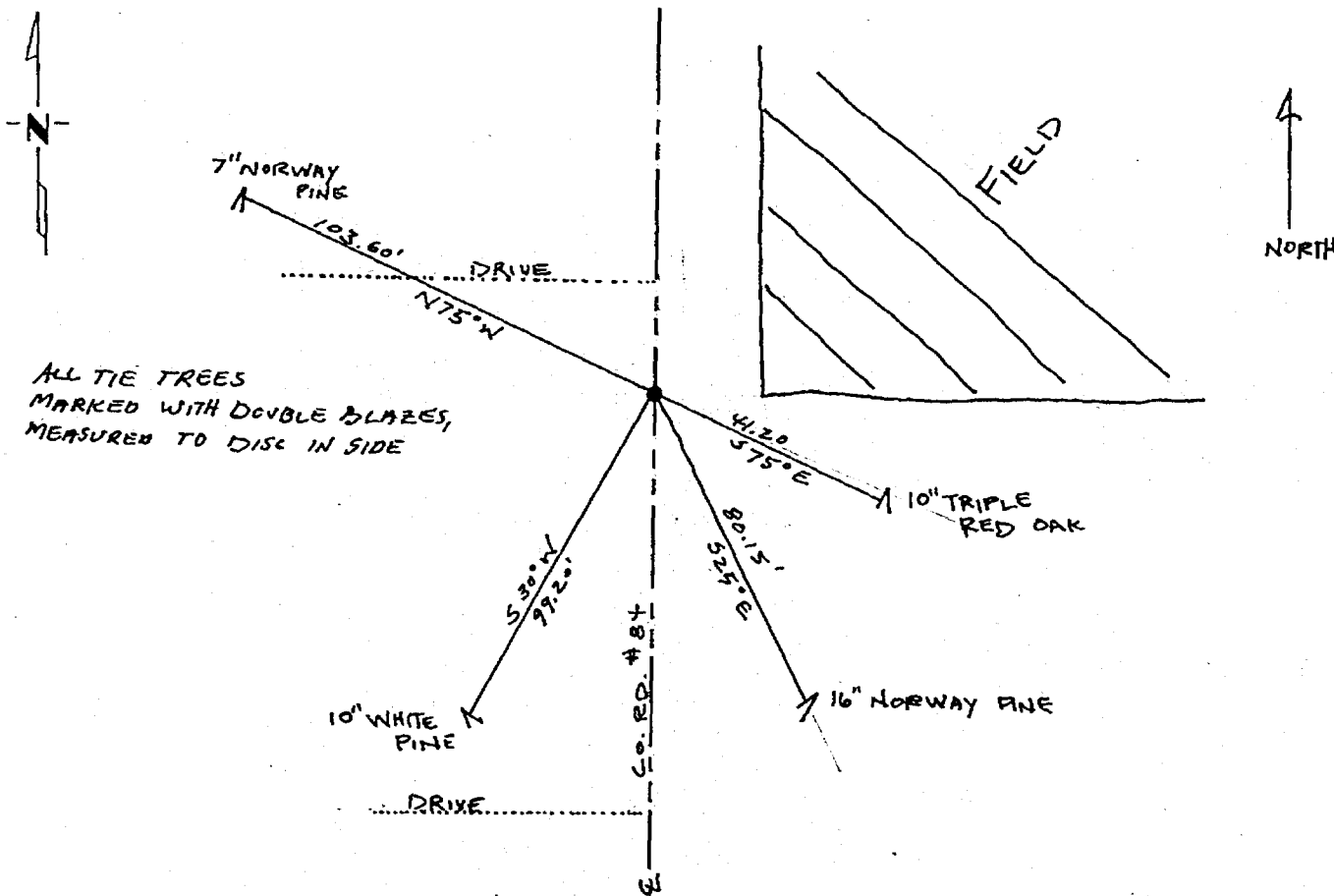
At the corner location shown on the sketch:

On 7/14/81 found a 1/2" iron pipe 4" below bituminous surface  
DATE  
at centerline of County Road #84

left monument as found,  lowered monument,  removed monument (explain)

On 7/16/84 placed a 4" cast iron monument 0.10 feet below surface of  
DATE  
road

### SKETCH OF REFERENCE TIES



Statement of evidence relative to this corner location is on back of page. 276696

I hereby certify that this document and the data contained herein was prepared by me or under my direct supervision.

Murray L. Sundecker 7/30/84  
SIGNATURE DATE

Registration No. 7452

- Land Surveyor,  Professional Engineer  
 County Surveyor,  County Engineer

OFFICE OF THE COUNTY RECORDER  
 County of Cass

I hereby certify that this document was filed in the Co. Recorders office at 11:50 A.M. on the 31 day of July A.D., 1984

County Recorder Cherline Kayler  
 By MS, Deputy

DOCUMENT NO. 276696

Statement of Evidence:

A post marking the original Government survey corner was set in 1865. In 1912 J.W. Curo found original Government BT stump and reset corner making new ties.

In 1973, 1976, 1981, Myron Landecker, Registered Land Surveyor #7452 while surveying in Section 3, Township 139 North, Range 29 West, found said corner. Through previous surveys and occupation, Mr. Landecker believes this monument is a perpetuation of said East Quarter corner.