

# CERTIFICATE OF LOCATION OF GOVERNMENT CORNER

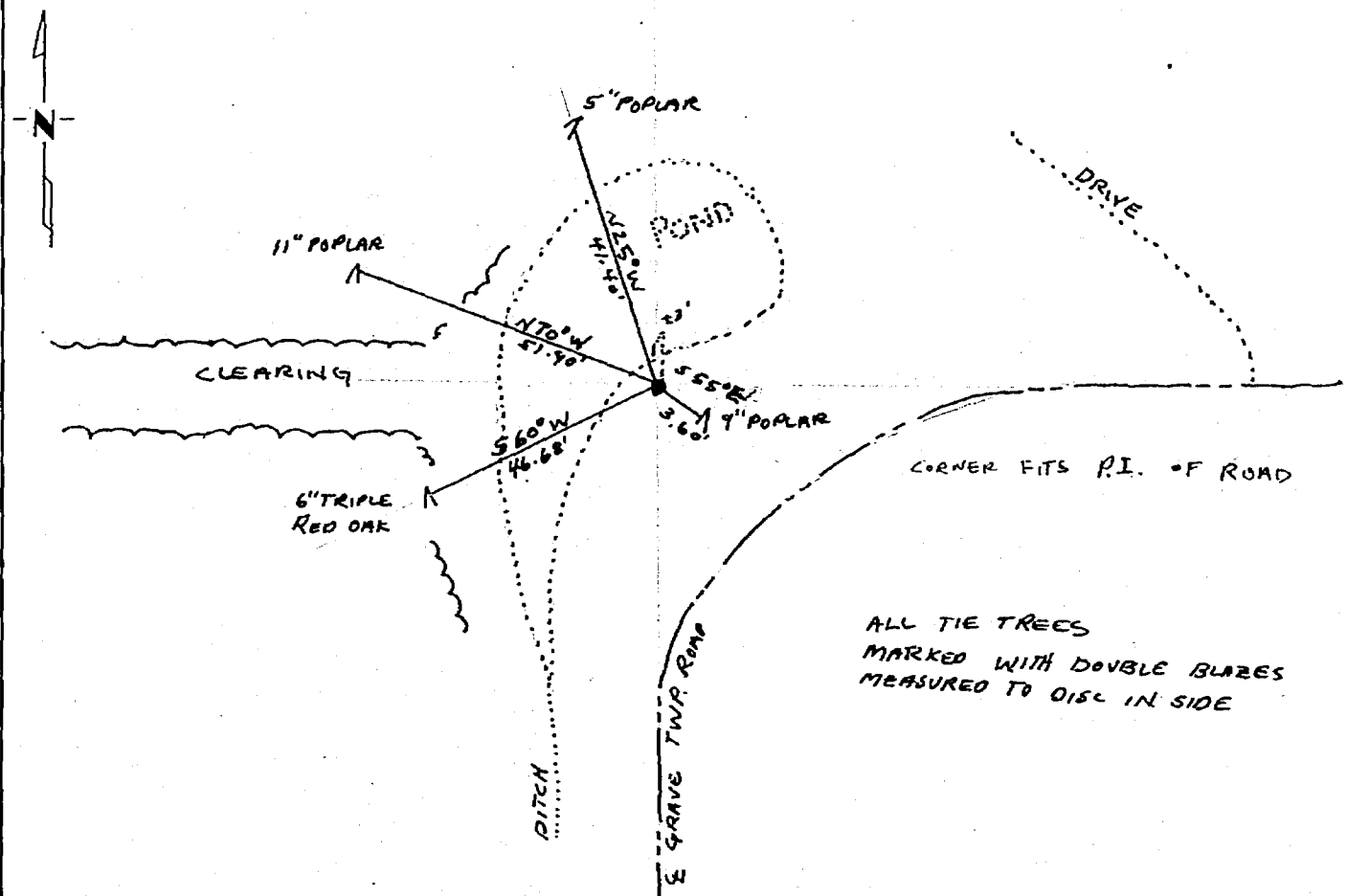
Southwest \_\_\_\_\_ Corner of Section 4, Township 139, Range 29, 5th P.M.

STATE OF MINNESOTA, County of Cass

At the corner location shown on the sketch:

- On 7/14/81 found a 2" capped iron pipe 1' above ground with 1 1/2" light metal pipe 0.80, North 45 degrees West of corner  
 left monument as found,  lowered monument,  removed monument (explain)
- On 7/26/84 placed a 4" cast iron monument flush with ground. Left guard post in place North 45 degrees West

SKETCH OF REFERENCE TIES



ALL TIE TREES  
MARKED WITH DOUBLE BLAZES  
MEASURED TO DISC IN SIDE

Statement of evidence relative to this corner location is on back of page.

276694

I hereby certify that this document and the data contained herein was prepared by me or under my direct supervision.

Murray S. Sandukis 7/30/84  
SIGNATURE DATE

Registration No. 7452

- Land Surveyor,  Professional Engineer
- County Surveyor,  County Engineer

OFFICE OF THE COUNTY RECORDER

County of Cass

I hereby certify that this document was filed in the Co. Recorders office at 11:40 A.M. on the 31 day of July A.D., 19 84

County Recorder Clairine Kayler  
By MS, Deputy

DOCUMENT NO. 276694

Statement of Evidence:

Original Government Survey

Corner set in 1865 by Wright & Walker

In 1911 J. Curo found stake set by Moulstar, Curo also used same in 1934

In 1939 J. Curo found 2" capped I.P. from previous surveys.

In 1970 R.F. Schneider, Registered Surveyor #5740 tied out corner

On 6/20/76 Myron Landecker, Registered Surveyor #7452, used iron in survey.

On 7/14/81 Myron Landecker used corner in section subdivision of Section 4, Township 139, Range 29 and believes this to be a perpetuation of the original Government corner.