

CERTIFICATE OF LOCATION OF GOVERNMENT CORNER

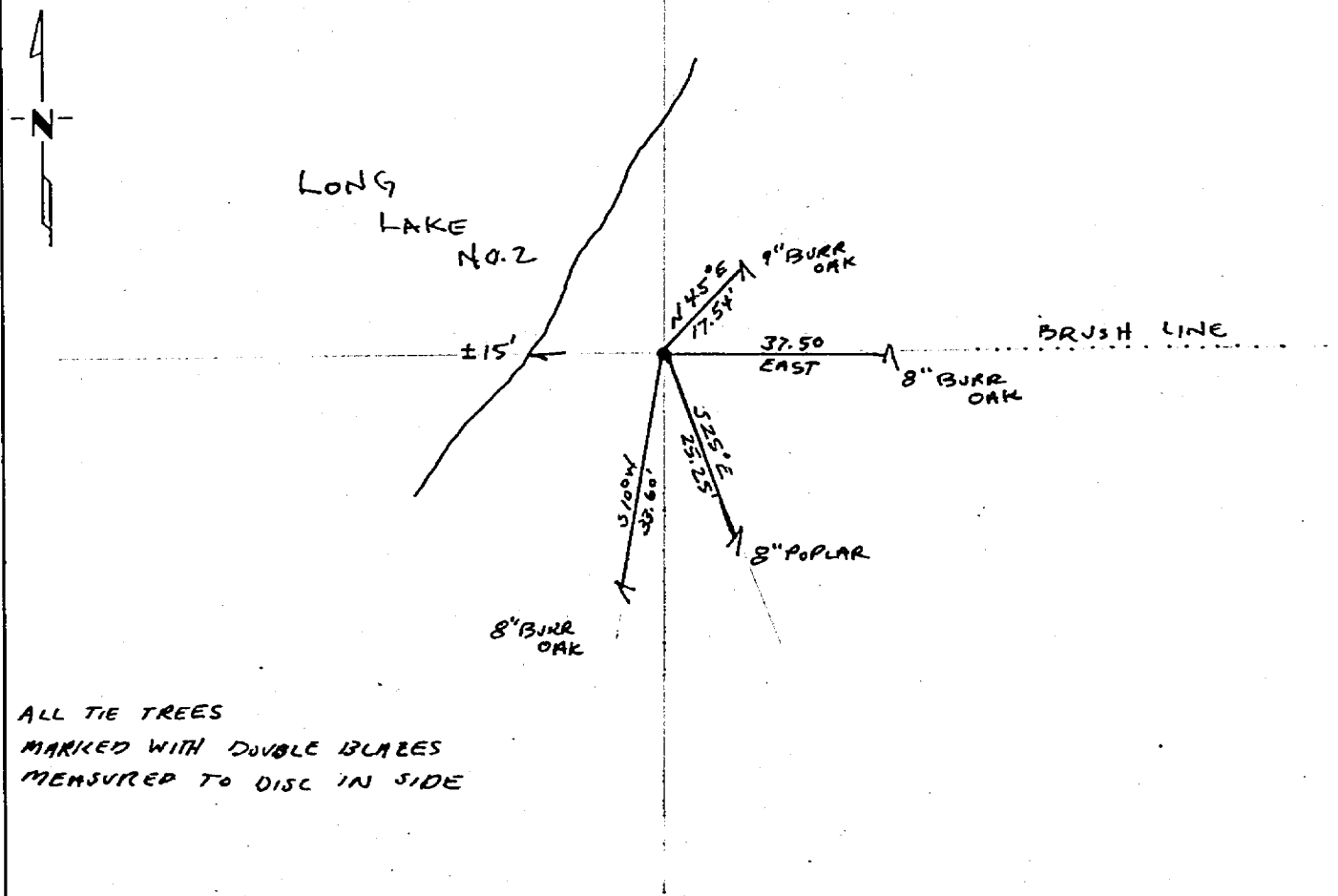
East Meander on North line.
 Corner of Section 4, Township 139, Range 29, 5th P.M.

STATE OF MINNESOTA, County of Cass

At the corner location shown on the sketch:

- On 7/14/81 found a 2" iron pipe 0.40' above ground
DATE
- left monument as found, lowered monument, removed monument (explain)
- On 7/26/84 placed a 36"x2"x2" square metal post with 2 3/4 square aluminium
DATE
cap stamped MC in top of cap 0.90 feet above ground

SKETCH OF REFERENCE TIES



ALL TIE TREES
 MARKED WITH DOUBLE BLAZES
 MEASURED TO DISC IN SIDE

Statement of evidence relative to this corner location is on back of page. 276691

I hereby certify that this document and the data contained herein was prepared by me or under my direct supervision.

Mary S. Stuckler 7/30/84
SIGNATURE DATE

Registration No. 7452

- Land Surveyor, Professional Engineer
- County Surveyor, County Engineer

OFFICE OF THE COUNTY RECORDER

County of Cass

I hereby certify that this document was filed in the Co. Recorders office at 11:10 A.M. on the 31 day of July A.D., 1984

County Recorder Claudine Kayler

By MS, Deputy

DOCUMENT NO. 276691

Statement of Evidence:

Original Government Survey

Corner set in 1865 by Wright & Walker

in 1957 iron was shown on Plat of First Addition to Birch Park not labeled MC by John E. Howard.

On 6/20/76 and 9/6/77 iron was used by Myron Landecker, Registered Land Surveyor #7452, in Section 4, Township 139, Range 29.

On 7/14/81 Myron Landecker located iron during subdivision of Section 4, Township 139, Range 29 and believes this to be a perpetuation of said corner as established through previous surveys.