

CERTIFICATE OF LOCATION OF GOVERNMENT CORNER

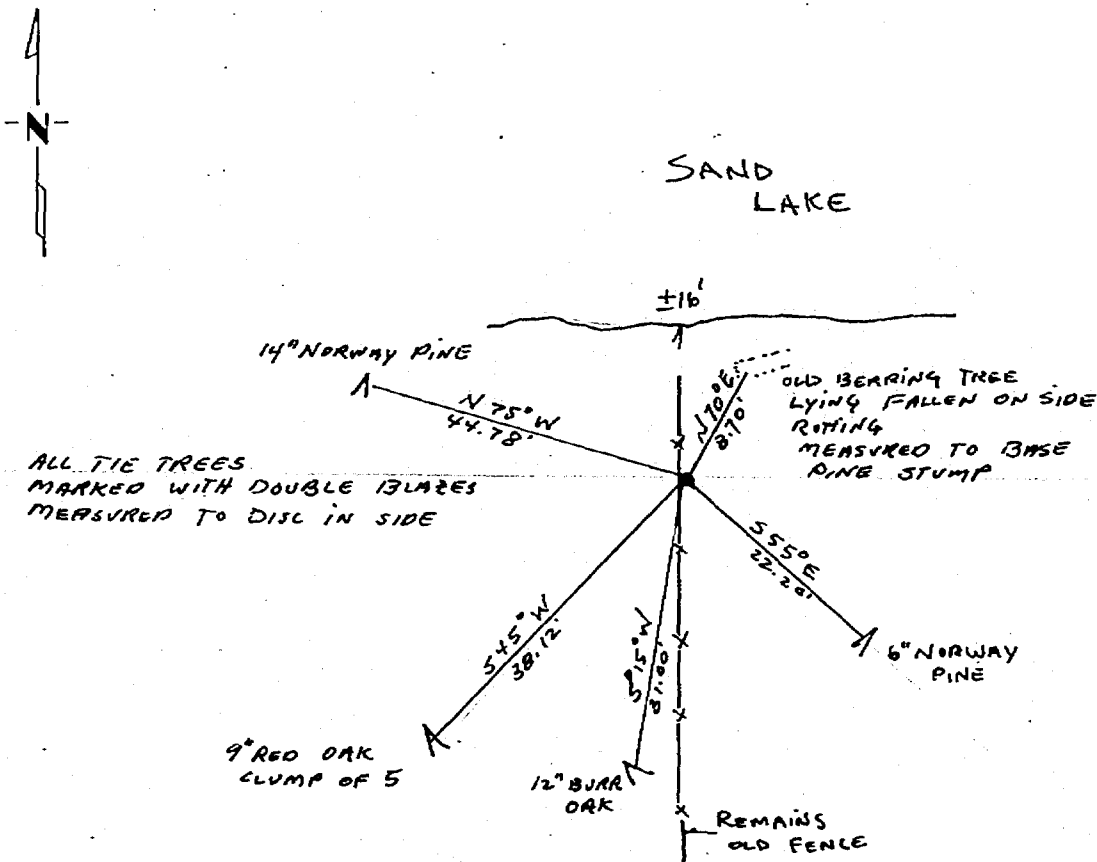
South Meander on West line Corner of Section 34, Township 140, Range 29, 5th P.M.

STATE OF MINNESOTA, County of Cass

At the corner location shown on the sketch:

- On 7/17/81 found a 2" iron pipe 0.50' above ground
DATE
- left monument as found, lowered monument, removed monument (explain)
- On 7/27/84 placed a 36"x2"x2" square metal post with 2-3/4" aluminium cap. (stamped M.C. in top of cap 0.30 feet above ground
DATE

SKETCH OF REFERENCE TIES



Statement of evidence relative to this corner location is on back of page. 276686

I hereby certify that this document and the data contained herein was prepared by me or under my direct supervision.

Meyers L. Savelber 7/30/84
SIGNATURE DATE

Registration No. 7452

- Land Surveyor, Professional Engineer
- County Surveyor, County Engineer

OFFICE OF THE COUNTY RECORDER

County of Cass

I hereby certify that this document was filed in the Co. Recorders office at 10:20 A.M. on the 31 day of July A.D., 1984

County Recorder Claudine Kayler

By MS, Deputy

DOCUMENT NO. 276686

Statement of Evidence:

Original Government Survey

Corner was set in 1870 by Orville Smith

In 1956 John Howard used this iron in Plat of Birch Park and labeled it as MC

In 1969 R.F. Schneider, Registered Land Surveyor #5740, used this iron in survey in Section 34, Township 140, Range 29

In 1977 iron was used by Myron Landecker, Registered Land Surveyor #7452, in lot survey of said plat.

On 11/25/80 Landecker again used MC iron in new Plat of Trednuk Sand Lake Addition, Section 34, Township 140, Range 29

On 7/17/81 Landecker again used MC to provide evidence for position of Southwest corner of Section 34, Township 140, Range 29

Myron Landecker believes this corner to be a perpetuation of the original Government corner.