

CERTIFICATE OF LOCATION OF GOVERNMENT CORNER

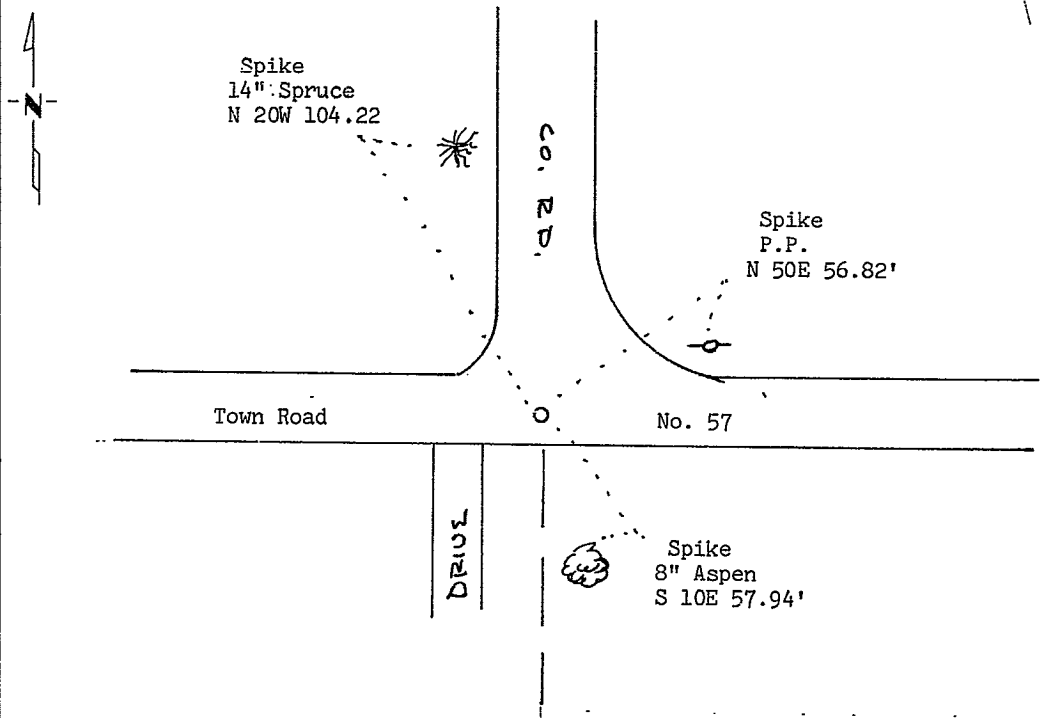
East Quarter _____ Corner of Section 10, Township 140, Range 25, 5th P.M.

STATE OF MINNESOTA, County of CASS

At the corner location shown on the sketch:

- On _____ found a _____
DATE
- left monument as found, lowered monument, removed monument (explain)
- On 5-8-84 placed a Cast Iron Monument in intersection of roads.
DATE

SKETCH OF REFERENCE TIES



Magnetic Bearings are approximate

Statement of evidence relative to this corner location is on back of page.

I hereby certify that this document and the data contained herein was prepared by me or under my direct supervision.

Mary A. Stevenson 6-6-84
SIGNATURE DATE

Registration No. 12684

- Land Surveyor, Professional Engineer
- County Surveyor, County Engineer

OFFICE OF THE COUNTY RECORDER

County of Cass

I hereby certify that this document was filed in the Co. Recorders office at 3:10 P. .M. on the 7 day of June A.D., 19 84

County Recorder Cloudiva Kayla
By MS, Deputy

DOCUMENT NO. 275706

Statement of Evidence:

- 1867 U.S. General Land Office survey set wood post for this corner and marked the following bearings trees: 10" Aspen S. 613/4 W. 10 links and 4" Birch S 43 E 19 links.
- 1916 Survey notes from Curo's notebook # 55 on pages 38 and 39 state that east-west road running through the center of Section 10 was laid out on the east-west Quarter line.
- 1931 Survey notes from Curo's notebook # 196 on page 41 shows this corner accepted as being in the intersection of roads east, west and north and in line with fence south.
- 1982 County Survey's Records in the Recorder's Office were checked and no resurvey information was found on this corner.
- 1983 No monument or marker was found for this corner in the intersection of roads east, west, and north. We checked with the County Highway Department and Smoky Hollow Township for records on this corner, but none were found. We checked the distances from the East Quarter corner of Section 11 to this corner against the 1931 survey. The distances checked well to the existing fence lines and roads along this line. Based on the 1916 and 1931 surveys, I accepted the road intersection as marking the obliterated corner position. We set a County Cast Iron Monument for the corner and took ties as shown on this certificate.