

CERTIFICATE OF LOCATION OF GOVERNMENT CORNER

SW 1/16 Corner of Section 7, Township 143, Range 30, 5th P.M.
STATE OF MINNESOTA, County of Cass

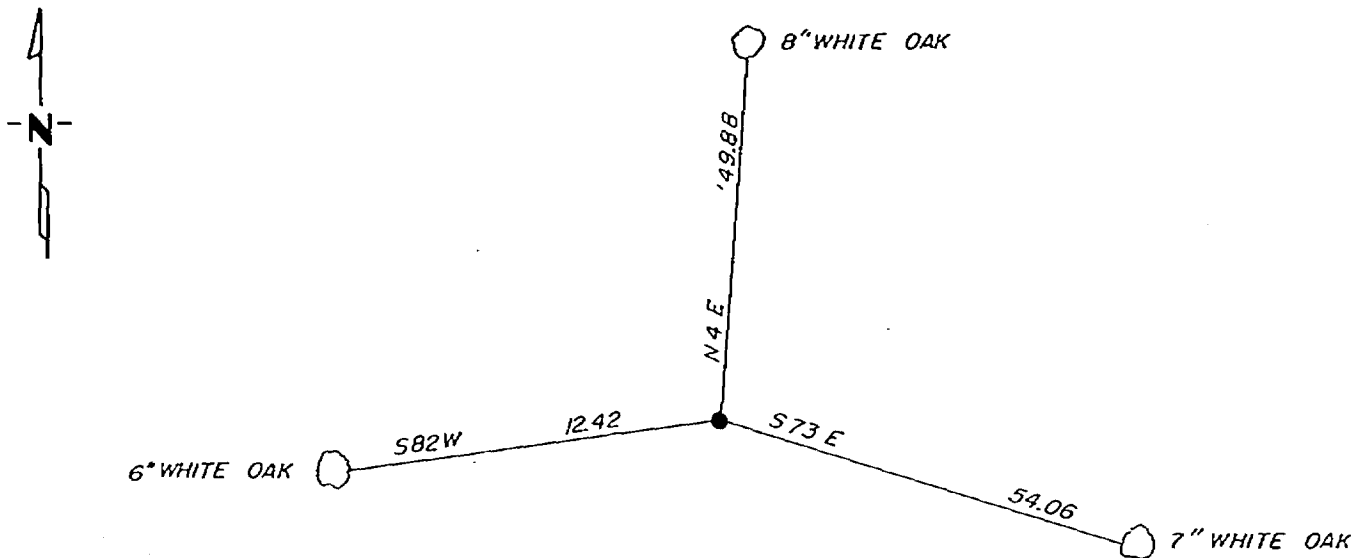
At the corner location shown on the sketch:

On 3-1-1983 found a 1" iron pipe with brass cap
DATE

left monument as found, lowered monument, removed monument (explain)

On _____ placed a _____
DATE

SKETCH OF REFERENCE TIES



Statement of evidence relative to this corner location is on back of page.

I hereby certify that this document and the data contained herein was prepared by me or under my direct supervision.

Walter E. Cass 3-15-83
SIGNATURE DATE

Registration No. 11395

Land Surveyor, Professional Engineer

County Surveyor, County Engineer

268852
OFFICE OF THE REGISTER OF DEEDS

County of Cass

I hereby certify that this document was filed in the Reg. of Deeds office at 3:41 P. M. on the 18 day of May A.D., 1983

Register of Deeds Clouline Kayler

By MS, Deputy

DOCUMENT NO. 268852

Statement of Evidence:

In 1921, Earl Harrington, a US surveyor set a 1"x36" iron pipe with brass cap for the SW 1/16 corner from which he marked the following bt's, a 8" birch N 68-1/2 E 37 links and a 5" birch S 64-1/2 with 41 links.

On 3-1-1983, Walter E. Curo, a registered land surveyor and Ken Metcalf found the 1" pipe with brass cap standing in good condition. We find no trace of the original bt's. We mark new bt's as shown on the front