

# CERTIFICATE OF LOCATION OF GOVERNMENT CORNER

S 1/16 Corner of Section 13 1/2, Township 143, Range 31, 5th P.M.

STATE OF MINNESOTA, County of Cass

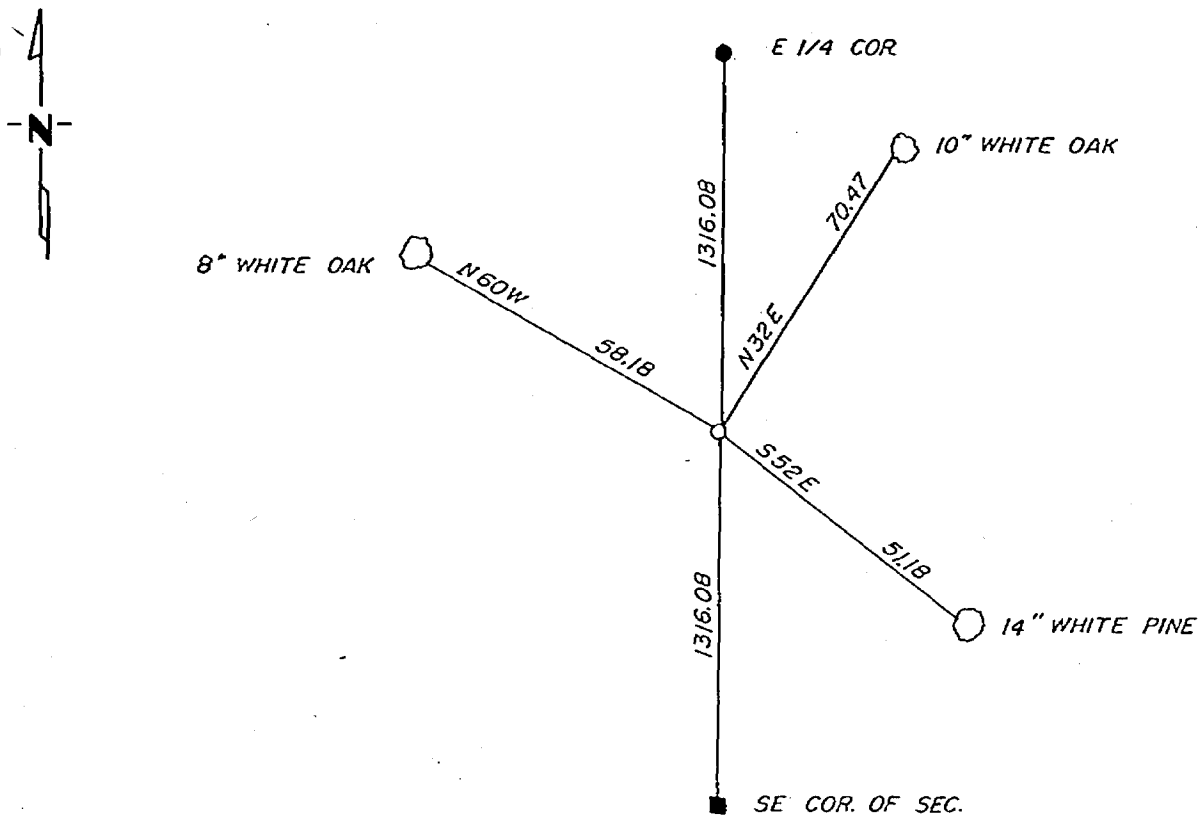
At the corner location shown on the sketch:

On \_\_\_\_\_ found a \_\_\_\_\_  
DATE

left monument as found,  lowered monument,  removed monument (explain)

On 2-23-1983 placed a 2"x36" iron pipe with brass cap flush with ground in power line, set at the midpoint between the E- $\frac{1}{4}$  corner and the SE corner section

SKETCH OF REFERENCE TIES



Statement of evidence relative to this corner location is on back of page.

268841

I hereby certify that this document and the data contained herein was prepared by me or under my direct supervision.

Walter S. Linn 3-18-83  
SIGNATURE DATE

Registration No. 11395

Land Surveyor,  Professional Engineer

County Surveyor,  County Engineer

OFFICE OF THE REGISTER OF DEEDS

County of Cass

I hereby certify that this document was filed in the Reg. of Deeds office at 2:50 P. .M. on the 18 day of May A.D., 1983

Register of Deeds Claudine Kayler

By MS, Deputy

DOCUMENT NO. 268841

Statement of Evidence:

In 1919, Albinus N. Kimmel, a cadastral engineer set a 1"x36" iron pipe with brass cap for the S 1/16 corner from which he marked the following bt's, a 4" white oak S 76 E 25 links and a 12" white oak N 28-1/2 W 39 links.

On 2-23-1983, Walter E. Curo, a registered land surveyor and Ken Metcalf searched for this corner as it falls in a cleared power line. We find no trace of the corner or the bt's. We set a 2"x36" iron pipe with brass cap flush with the ground at the midpoint between the E 1/4 corner and the southeast corner of the section from which we mark new bt's as shown on the front.