

CERTIFICATE OF LOCATION OF GOVERNMENT CORNER

Northeast Corner of Section 32, Township 139N, Range 30W, 5th P.M.

STATE OF MINNESOTA, County of Cass

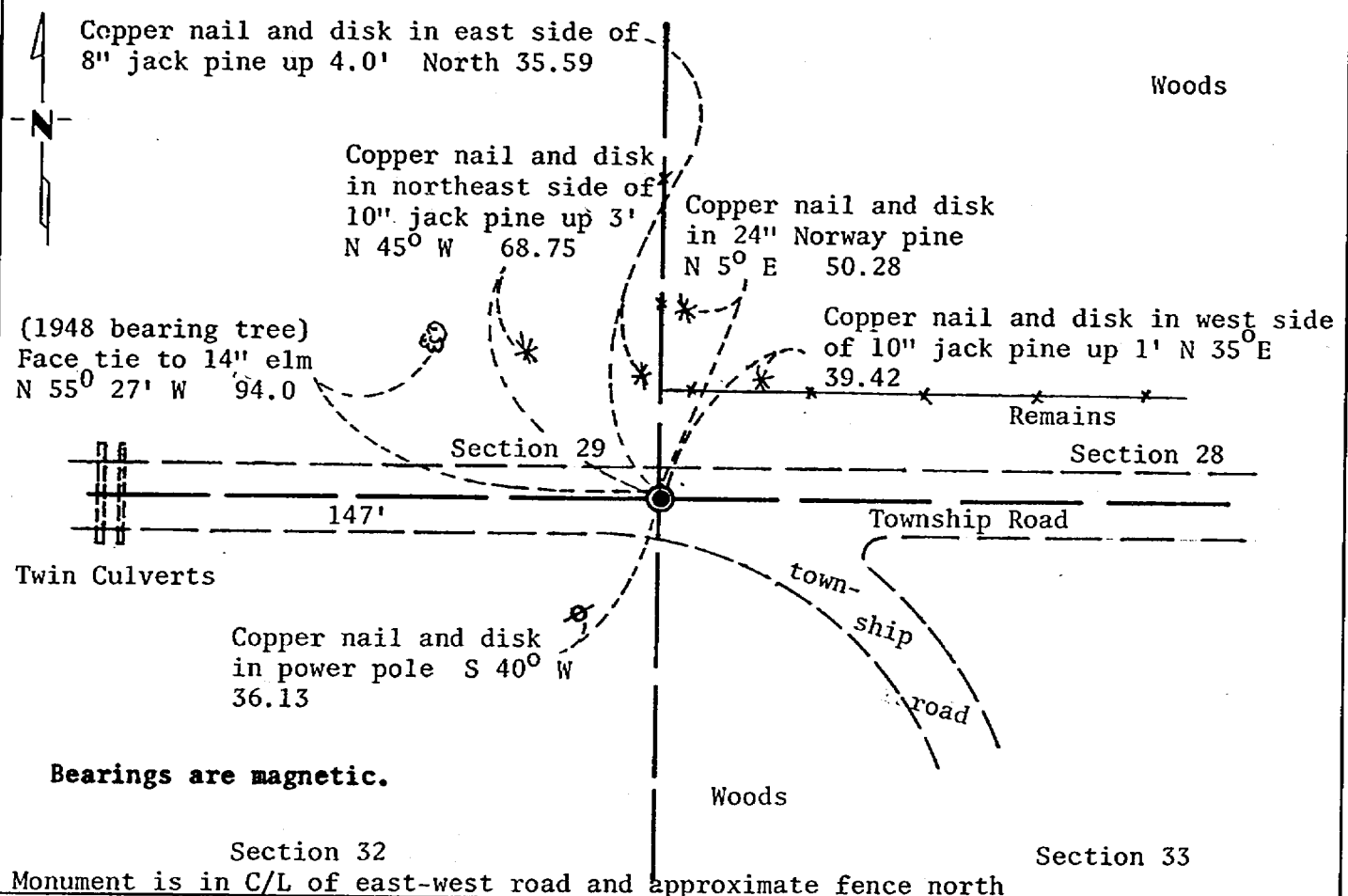
At the corner location shown on the sketch:

On 2/11/81 found a 1 1/2" iron pipe down 5" below surface of road
DATE

left monument as found, lowered monument, removed monument (explain)

On _____ placed a _____
DATE

SKETCH OF REFERENCE TIES



Monument is in C/L of east-west road and approximate fence north

Statement of evidence relative to this corner location is on back of page. 267960

I hereby certify that this document and the data contained herein was prepared by me or under my direct supervision.

James W. Reuben 3/4/83
SIGNATURE DATE

Registration No. 11865

Land Surveyor, Professional Engineer

County Surveyor, County Engineer

OFFICE OF THE COUNTY RECORDER
County of Cass

I hereby certify that this document was filed in the Co. Recorders office at 12:50 P.M. on the 4 day of April A.D., 19 83

County Recorder Claudine Kayler
By MS, Deputy

DOCUMENT NO. 267960

Statement of Evidence:

Northeast Corner Section 32, Township 139 North, Range 30 West, 5th Principal Meridian.

The Original Public Land Survey was run in 1865 and a wood post was set to mark the corner.

In 1906, Mr. John Curo set an 8" x 8" x 36" concrete post for the corner from the original bearing trees.

In 1948, Mr. Harold Curo set a pipe in the south wheel track from a bearing tree and made four new bearing tree ties.

In 1981, the Minnesota Department of Transportation recovered a 1½" pipe in the approximate centerline of the township road and also recovered one of Mr. Harold Curo's bearing trees (10" elm; N 55° 42' W; 93.90). The bearing tree fits the pipe and we accept this as the perpetuation of original Government corner.

For details and survey analysis, contact the Minnesota Department of Transportation Surveys Office in Brainerd, Minnesota.