

# CERTIFICATE OF LOCATION OF GOVERNMENT CORNER

Northeast Corner of Section 31, Township 139N, Range 30W, 5th P.M.

STATE OF MINNESOTA, County of Cass

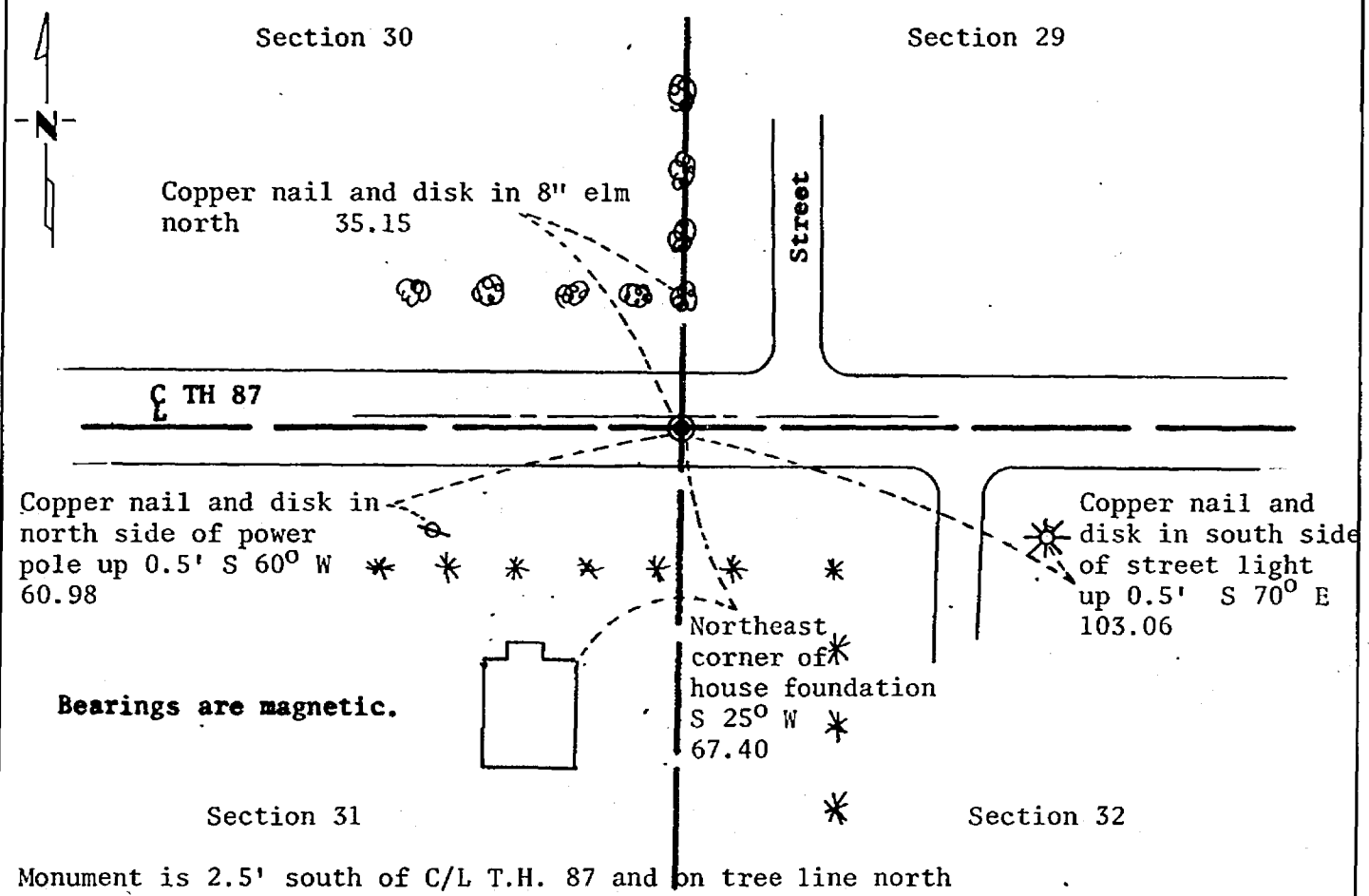
At the corner location shown on the sketch:

On 2/10/81 found a 1 1/2" iron pipe (down 5")  
DATE

left monument as found,  lowered monument,  removed monument (explain)

On \_\_\_\_\_ placed a \_\_\_\_\_  
DATE

### SKETCH OF REFERENCE TIES



Statement of evidence relative to this corner location is on back of page. 267958

I hereby certify that this document and the data contained herein was prepared by me or under my direct supervision.

James W. Nielsen 3/4/83  
SIGNATURE DATE

Registration No. 11865

Land Surveyor,  Professional Engineer  
 County Surveyor,  County Engineer

OFFICE OF THE COUNTY RECORDER  
County of Cass

I hereby certify that this document was filed in the Co. Recorders office at 12:40 P.M. on the 4 day of April A.D., 1983

County Recorder Claudia Kayla  
By MS, Deputy

DOCUMENT NO. 267958

Statement of Evidence:

Northeast Corner Section 31, Township 139 North, Range 30 West, 5th Principal Meridian.

The Original Public Land Survey was run in 1865 and a wood post was set to mark the corner.

In 1906, Mr. John Curo, Cass County Surveyor, set an 8" x 8" x 36" concrete monument at the location of an iron pin and stone which had been set from the original bearing trees.

In 1928, the Minnesota Highway Department found the concrete monument and tied it to the highway alignment.

In 1946, an iron pipe was set in the centerline of the highway to mark the corner for the plat of "Zaffke's Addition to Backus".

In 1981, the Minnesota Department of Transportation found an 1½" pipe (down 0.5') 2.5' south of the highway centerline. By reconstructing the 1928 survey information, we determined that the 1½" pipe is in the same location as the 1928 concrete monument. The Minnesota Department of Transportation accepts this pipe as a perpetuation of the original Government corner.

For details and survey analysis, contact the Minnesota Department of Transportation Surveys Office in Brainerd, Minnesota.