

CERTIFICATE OF LOCATION OF GOVERNMENT CORNER

East Quarter Corner of Section 30, Township 139N, Range 30W, 5th P.M.

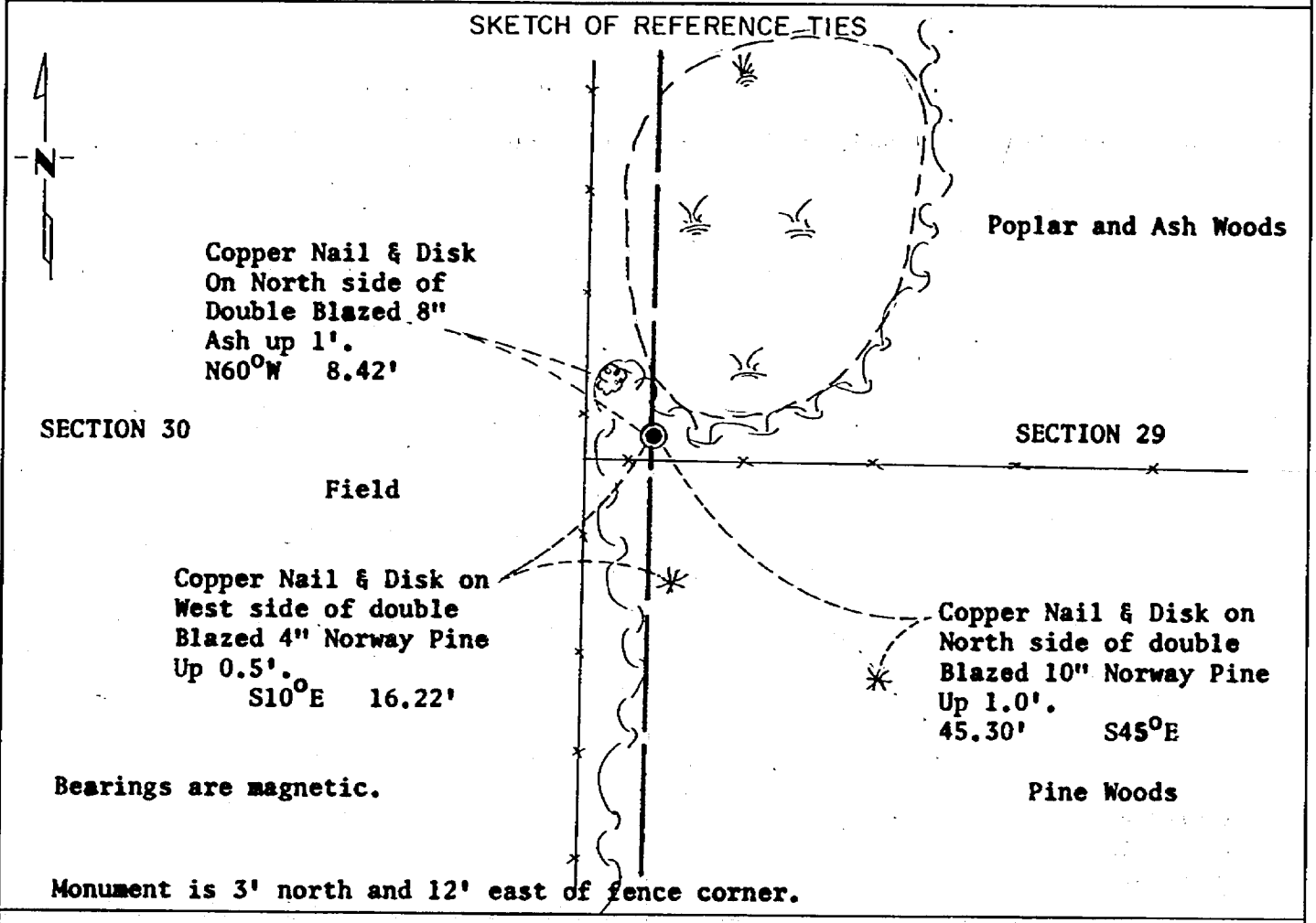
STATE OF MINNESOTA, County of Cass

At the corner location shown on the sketch:

On 02/10/81 found a 1-1/2" iron pipe up 1.0'
DATE

left monument as found, lowered monument, removed monument (explain)

On _____ placed a _____
DATE



Statement of evidence relative to this corner location is on back of page. 267957

I hereby certify that this document and the data contained herein was prepared by me or under my direct supervision.

James W. Nielsen 3/4/83
SIGNATURE DATE

Registration No. 11865

Land Surveyor, Professional Engineer

County Surveyor, County Engineer

OFFICE OF THE COUNTY RECORDER
County of Cass

I hereby certify that this document was filed in the Co. Recorders office at 12:35 P .M. on the 4 day of April A.D., 19 83

County Recorder Claudine Kayler
By MS, Deputy

DOCUMENT NO. 267957

Statement of Evidence: East Quarter Corner Section 30, Township 139 North,
Range 30 West, 5th Principal Meridian.

The original Public Land Survey was run in 1865 and a wood post was set to mark the corner.

Mr. Curo, Cass County Surveyor, did much work in this area in the early 1900's but makes no reference to this corner.

In 1977, Mr. Bruce Buxton used a lost position for this corner for surveying the Backus Airport.

In 1981, the Minnesota Department of Transportation recovered a 1-1/2" pipe at the lost location. The pipe is 3 feet north and 12 feet west of an old fence corner location. The condition of the pipe would indicate that it was set prior to 1977. The Department put in considerable effort to verify this corner location. At the 1/16th position south of the corner a pipe was found laying along the road, having been just recently graded out of the road. We were unable to find its original location. Attempts to retrace the original plat of Backus, to verify a location, proved fruitless. Being unable to find any evidence of a corner location, other than the pipe and fence, the Department accepted the 1-1/2" pipe for the location of the corner.

The Minnesota Department of Transportation accepts the 1-1/2" pipe for the location of the corner.

For details and survey analysis, contact the Minnesota Department of Transportation District Surveys Office in Brainerd, Minnesota.