

# CERTIFICATE OF LOCATION OF GOVERNMENT CORNER

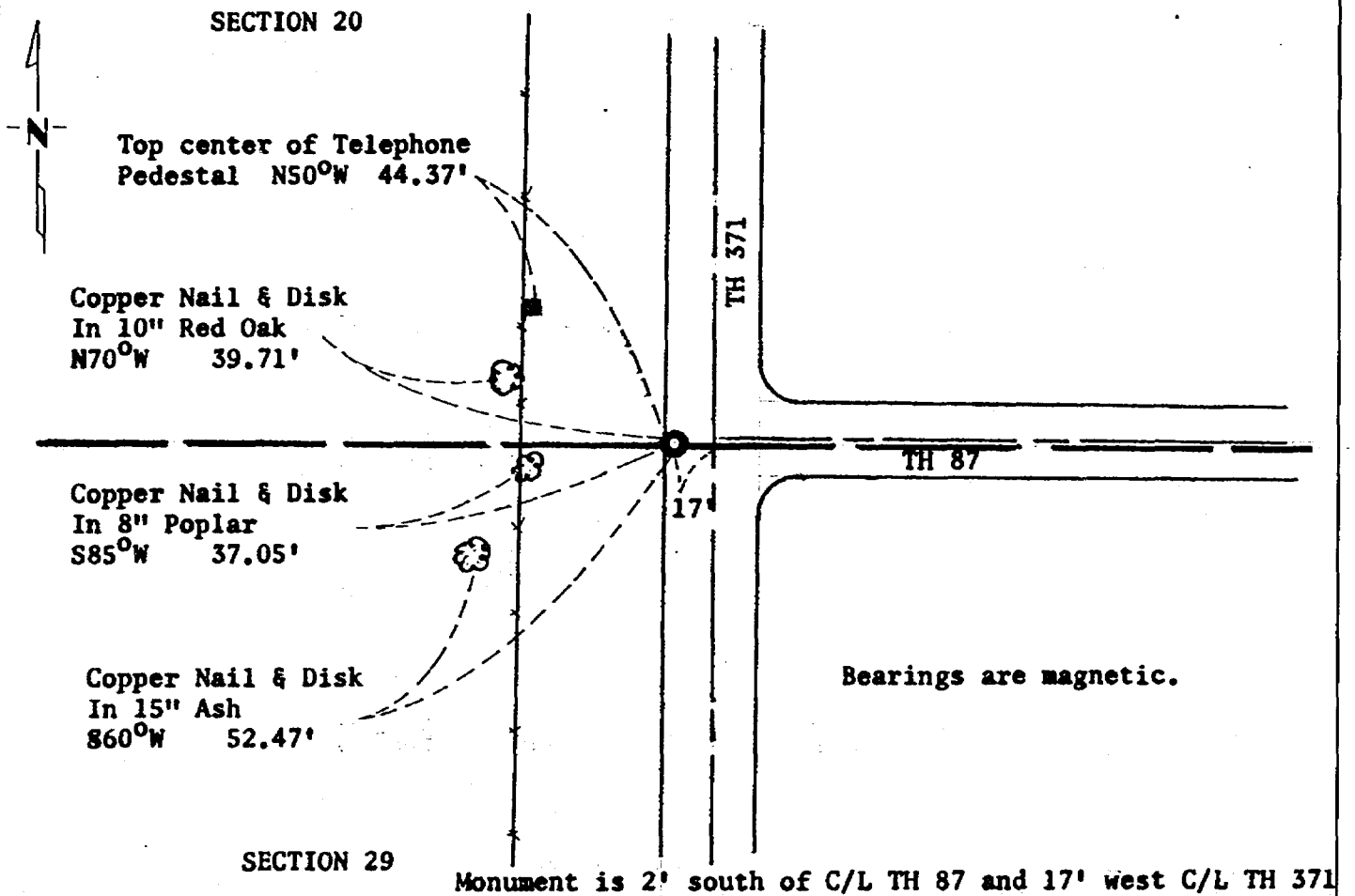
North Quarter Corner of Section 29, Township 139N, Range 30W, 5th P.M.

STATE OF MINNESOTA, County of Cass

At the corner location shown on the sketch:

- On 02/12/81 found a 3/4" Iron Pin down 6" on west shoulder over 2" capped pipe.  
DATE
- (pipe)  left monument as found,  lowered monument,  removed monument (explain)(pin)
- On 08/31/82 placed a Minnesota State Highway Department Cast Iron Monument (down 0.5').  
DATE

### SKETCH OF REFERENCE TIES



Statement of evidence relative to this corner location is on back of page.

267956

I hereby certify that this document and the data contained herein was prepared by me or under my direct supervision.

James W. Nielsen 3/4/83  
SIGNATURE DATE

Registration No. 11865

- Land Surveyor,  Professional Engineer
- County Surveyor,  County Engineer

OFFICE OF THE COUNTY RECORDER

County of Cass

I hereby certify that this document was filed in the Co. Recorders office at 12:30 P.M. on the 4 day of April A.D., 19 83

County Recorder Claudine Kayler

By MS, Deputy

DOCUMENT NO. 267956

Statement of Evidence:      **North Quarter Corner Section 29, Township 139 North,  
Range 30 West, 5th Principal Meridian.**

**The Original Public Land Survey was run in 1865 and a wood post was set to mark the corner.**

**In 1911, Mr. John Curo, Cass County Surveyor, set a 2" x 48" capped Iron Pipe at the lost location.**

**In 1967, the Minnesota Highway Department found a 3/4" Iron Pin over the 2" capped pipe, 17.0 feet west of P.I. 545+93.1.**

**In 1981, the Minnesota Department of Transportation recovered the 3/4" Iron Pin over the 2" capped Pipe. The Minnesota Department of Transportation accepts this monument as a perpetuation of the lost position as established by Mr. Curo in 1911.**

**For details and survey analysis, contact the Minnesota Department of Transportation Surveys Office in Brainerd, Minnesota.**