

CERTIFICATE OF LOCATION OF GOVERNMENT CORNER

East Quarter _____ Corner of Section 17, Township 139N, Range 30 W, 5th P.M.

STATE OF MINNESOTA, County of Cass

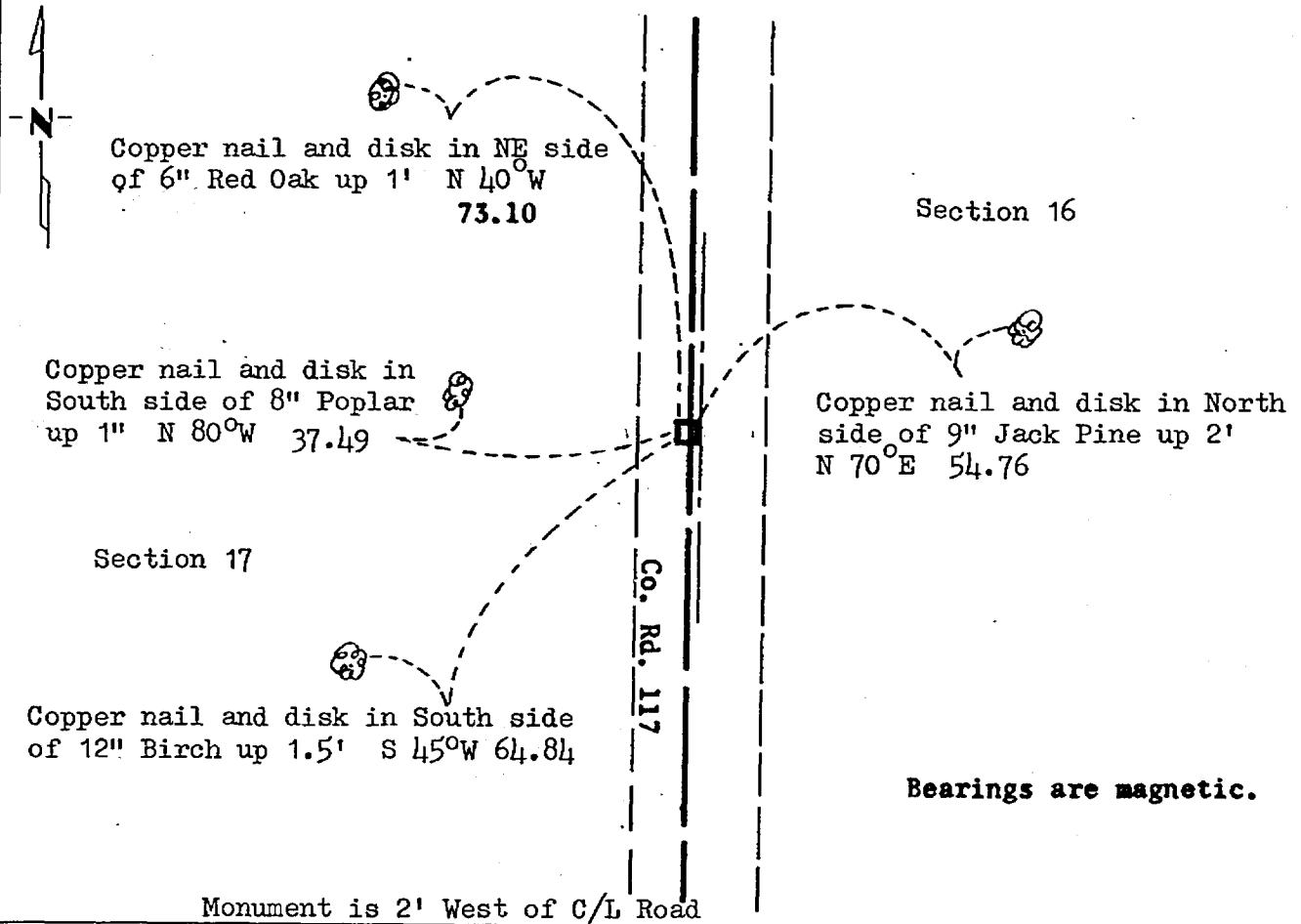
At the corner location shown on the sketch:

On 2/11/81 found a 8 x 8 Concrete Monument Flush with Road
DATE

left monument as found, lowered monument, removed monument (explain)

On _____ placed a _____
DATE

SKETCH OF REFERENCE TIES



Statement of evidence relative to this corner location is on back of page.

267949

I hereby certify that this document and the data contained herein was prepared by me or under my direct supervision.

James W. Nielsen 3/4/82
SIGNATURE DATE

Registration No. 11865

Land Surveyor, Professional Engineer

County Surveyor, County Engineer

OFFICE OF THE COUNTY RECORDER

County of Cass

I hereby certify that this document was filed in the Co. Recorders office at 11:55 A.M. on the 4 day of April A.D., 1982

County Recorder Claudine Kayser

By MS, Deputy

DOCUMENT NO. 267949

Statement of Evidence:

East Quarter Corner Section 17, Township 139 North, Range 30 West, 5th Principal Meridian.

The original Public Land Survey was run in 1865 and a wood post was set to mark the corner.

In 1907, Mr. John Curo set a 8 x 8 concrete monument for the corner from the original bearing trees.

In 1981, the Minnesota Department of Transportation recovered the 8 x 8 concrete monument set by Curo and accepts this as the perpetuation of the original Government Corner.

For details and survey analysis, contact the Minnesota Department of Transportation Surveys Office in Brainerd, Minnesota.