

CERTIFICATE OF LOCATION OF GOVERNMENT CORNER

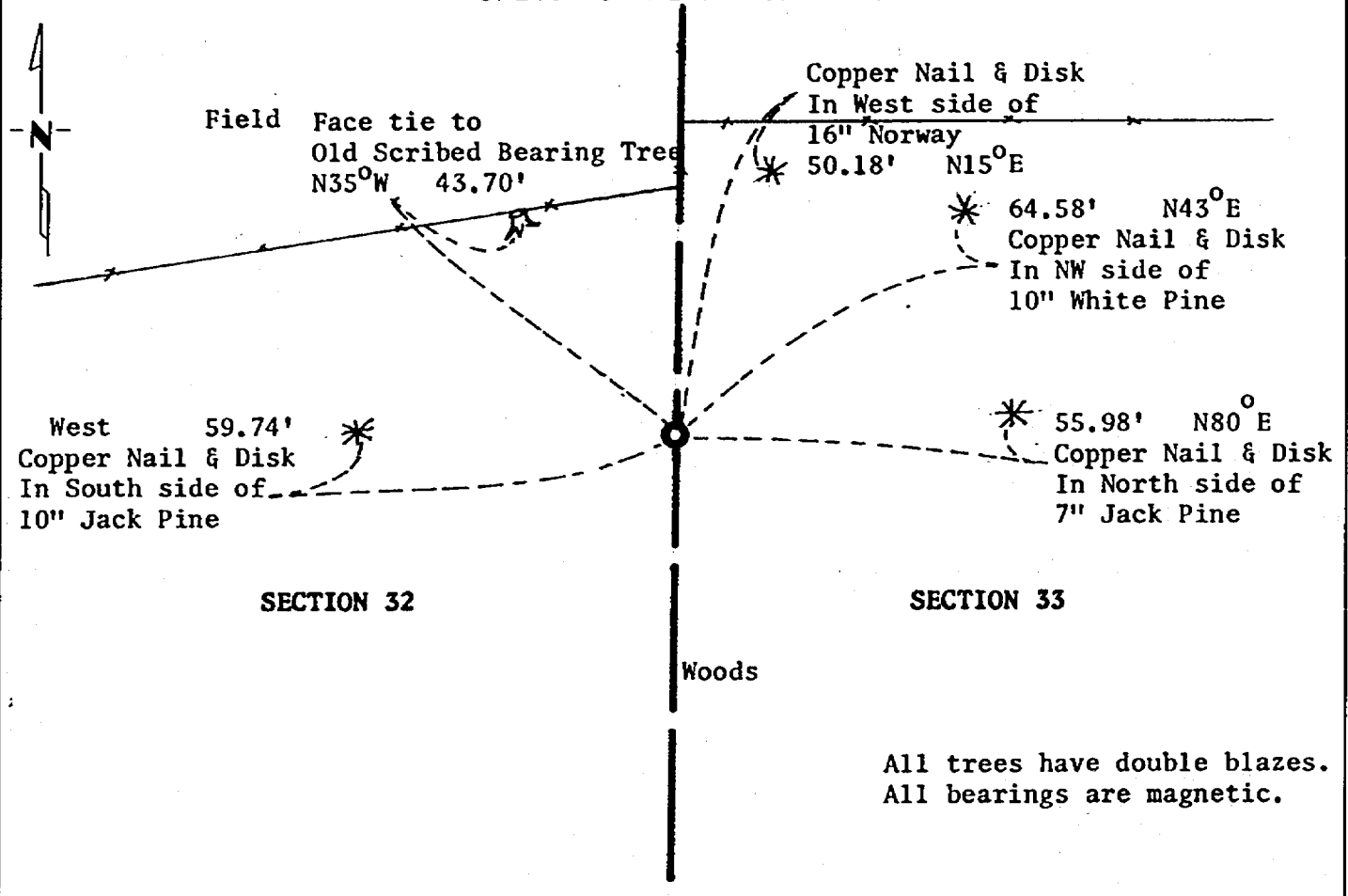
East Quarter Corner of Section 32, Township 140N, Range 30W, 5th P.M.

STATE OF MINNESOTA, County of Cass

At the corner location shown on the sketch:

- On _____ found ~~no~~ nothing
DATE
- left monument as found, lowered monument, removed monument (explain)
- On 09/03/82 placed a Minnesota State Highway Department cast iron
DATE monument.

SKETCH OF REFERENCE TIES



Statement of evidence relative to this corner location is on back of page. 267938

I hereby certify that this document and the data contained herein was prepared by me or under my direct supervision.

James W. Nielsen 3/4/83
SIGNATURE DATE

Registration No. 11865

Land Surveyor, Professional Engineer

County Surveyor, County Engineer

OFFICE OF THE COUNTY RECORDER
County of Cass

I hereby certify that this document was filed in the Co. Recorders office at 11:00 A.M. on the 4 day of April A.D., 1983

County Recorder Cloudine Kayler
By MS, Deputy

DOCUMENT NO. 267938

Statement of Evidence: East Quarter Corner of Section 32, Township 140 North,
Range 30 West, 5th Principal Meridian.

The original Public Land Survey was run in 1865 and a wood post was set to mark the corner.

In 1907 Mr. John Curo, County Surveyor, called for a post at the corner.

In 1982 the Minnesota Department of Transportation found an old scribed bearing tree stump but did not find any corner evidence or any more records for this corner. A lost location fits the face blazes on the bearing tree and also fits the fence line going north. We set the corner at the lost location, midway and on line between the Northeast Corner of Section 32 and the Southeast Corner of Section 32.

For details and survey analysis contact the Minnesota Department of Transportation Surveys Office in Brainerd, Minnesota.