

# CERTIFICATE OF LOCATION OF GOVERNMENT CORNER

\_\_\_\_\_Northeast\_\_\_\_\_  
Corner of Section 32, Township 140N, Range 30W, 5th P.M.

STATE OF MINNESOTA, County of Cass

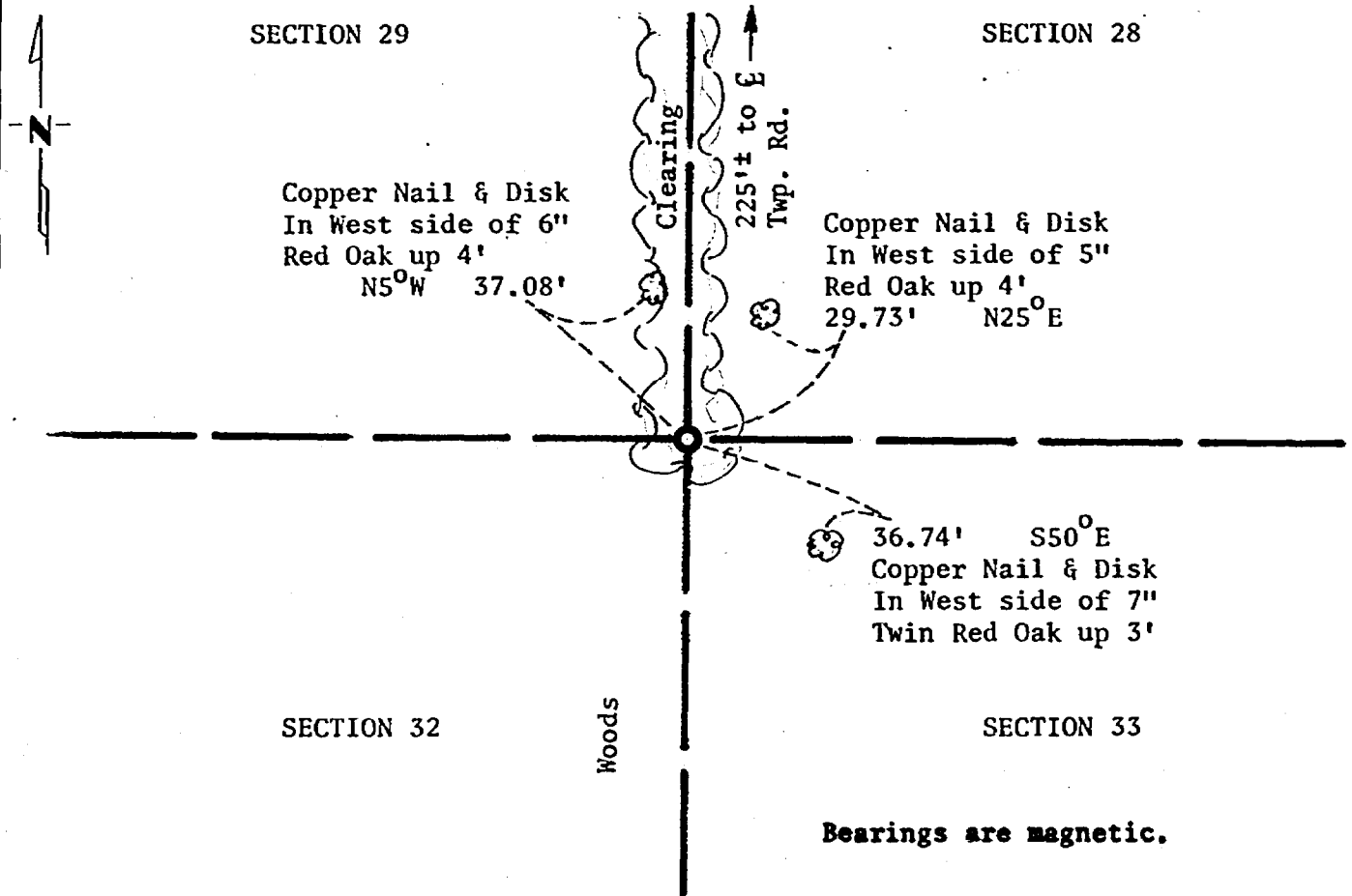
At the corner location shown on the sketch:

On 05/08/81 found a 1" capped pipe up 1'.  
DATE

left monument as found,  lowered monument,  removed monument (explain)

On \_\_\_\_\_ placed a \_\_\_\_\_  
DATE

### SKETCH OF REFERENCE TIES



Statement of evidence relative to this corner location is on back of page 267936

I hereby certify that this document and the data contained herein was prepared by me or under my direct supervision.

James W. Nielson 3/4/83  
SIGNATURE DATE

Registration No. 11865

Land Surveyor,  Professional Engineer

County Surveyor,  County Engineer

OFFICE OF THE COUNTY RECORDER

County of Cass

I hereby certify that this document was filed in the Co. Recorders office at 10:50 A.M. on the 4 day of April A.D., 19 83

County Recorder Cloudine Kayler

By MS, Deputy

DOCUMENT NO. 267936

Statement of Evidence: Northeast Corner Section 32, Township 140 North,  
Range 30 West, 5th Principal Meridian.

The original Public Land Survey was run in 1865 and a wood post was set to mark the corner.

In 1907 Mr. John Curo shows the section corner post in place.

In 1922 Mr. J. Flynn set an iron from the original bearing trees.

In 1966 Mr. Robert Schneider shows a pin for the corner. We could not verify that this was Mr. Flynn's iron.

In 1981 the Minnesota Department of Transportation found a 1" capped pipe at the corner location. We could not find any record of the origin of the 1" capped pipes. The capped pipe agrees with Mr. Schneider's distance across the north line of Section 32. The 1" capped pipe is compatible with the adjoining land corners. We could not find any evidence that conflicted with the 1" capped pipe location. The Minnesota Department of Transportation accepts the 1" capped pipe as the correct location for the corner.

For details and survey analysis contact the Minnesota Department of Transportation District Survey Office in Brainerd, Minnesota.