

# CERTIFICATE OF LOCATION OF GOVERNMENT CORNER

North Quarter Corner of Section 30, Township 140N, Range 30W, 5th P.M.

STATE OF MINNESOTA, County of Cass

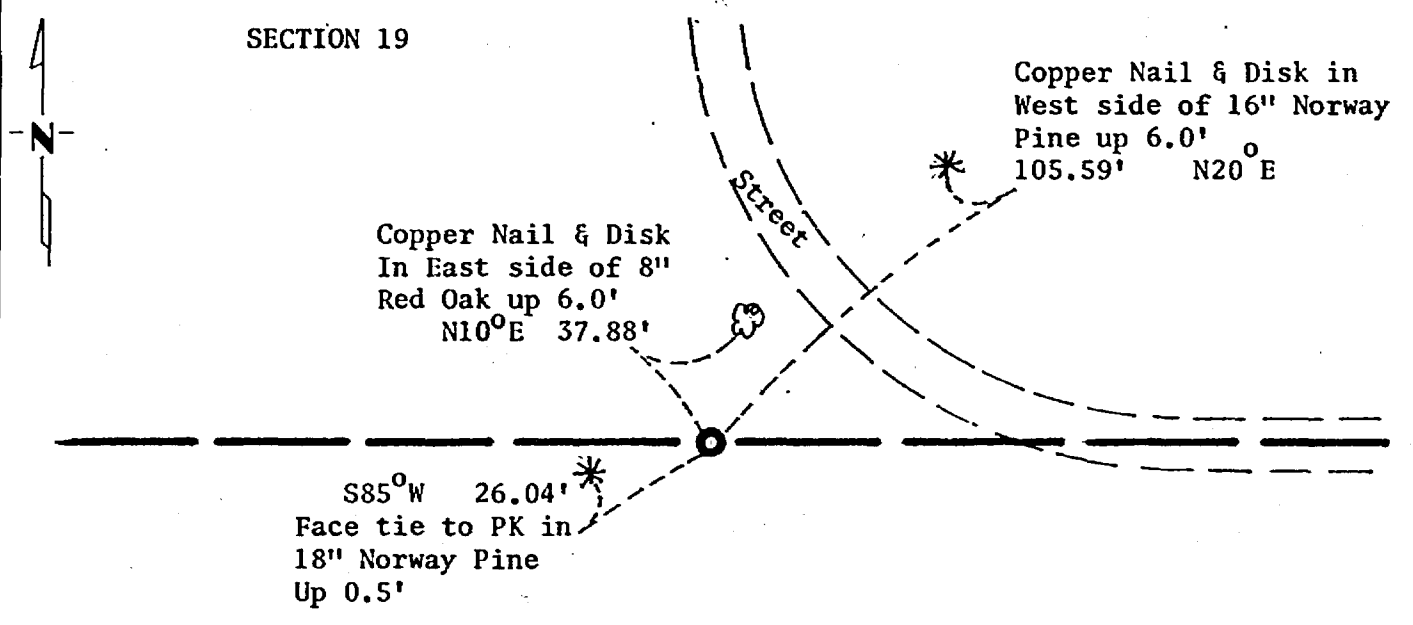
At the corner location shown on the sketch:

On 05/19/81 found a 2" capped pipe.  
DATE

left monument as found,  lowered monument,  removed monument (explain)

On \_\_\_\_\_ placed a \_\_\_\_\_  
DATE

### SKETCH OF REFERENCE TIES.



**Bearings are magnetic.**

SECTION 30

Monument is at PI of streets north and east.

Statement of evidence relative to this corner location is on back of page.

267930

I hereby certify that this document and the data contained herein was prepared by me or under my direct supervision.

James W. Nielsen 3/4/83  
SIGNATURE DATE

Registration No. 11865

Land Surveyor,  Professional Engineer

County Surveyor,  County Engineer

OFFICE OF THE COUNTY RECORDER

County of Cass

I hereby certify that this document was filed in the Co. Recorders office at 10:20 A.M. on the 4 day of April A.D., 1982

County Recorder Claudine Kayler

By MS, Deputy

DOCUMENT NO. 267930

Statement of Evidence: North Quarter Section 30, Township 140 North,  
Range 30 West, 5th Principal Meridian.

The original Public Land Survey was run in 1865 and a wood post was set to mark the corner.

In 1921 Mr. J. Flynn found a 2" capped pipe at the corner.

In 1928 and 1967 the Minnesota Highway Department found the 2" capped pipe at the corner.

In 1981 the Minnesota Department of Transportation recovered the 2" capped pipe at the corner. This is the type of monument Mr. John Curo (County Surveyor) used between 1905 and 1917. We accept the 2" pipe being at the correct location and as Mr. Curo's pipe but could not find the notes to verify it.

For details and survey analysis contact the Minnesota Department of Transportation Surveys Office in Brainerd, Minnesota.

\* County Surveyor's Records: In 1910, Mr. John Curo, Cass County Surveyor, set an iron monument for the corner from the original Bearing Trees.