

# CERTIFICATE OF LOCATION OF GOVERNMENT CORNER

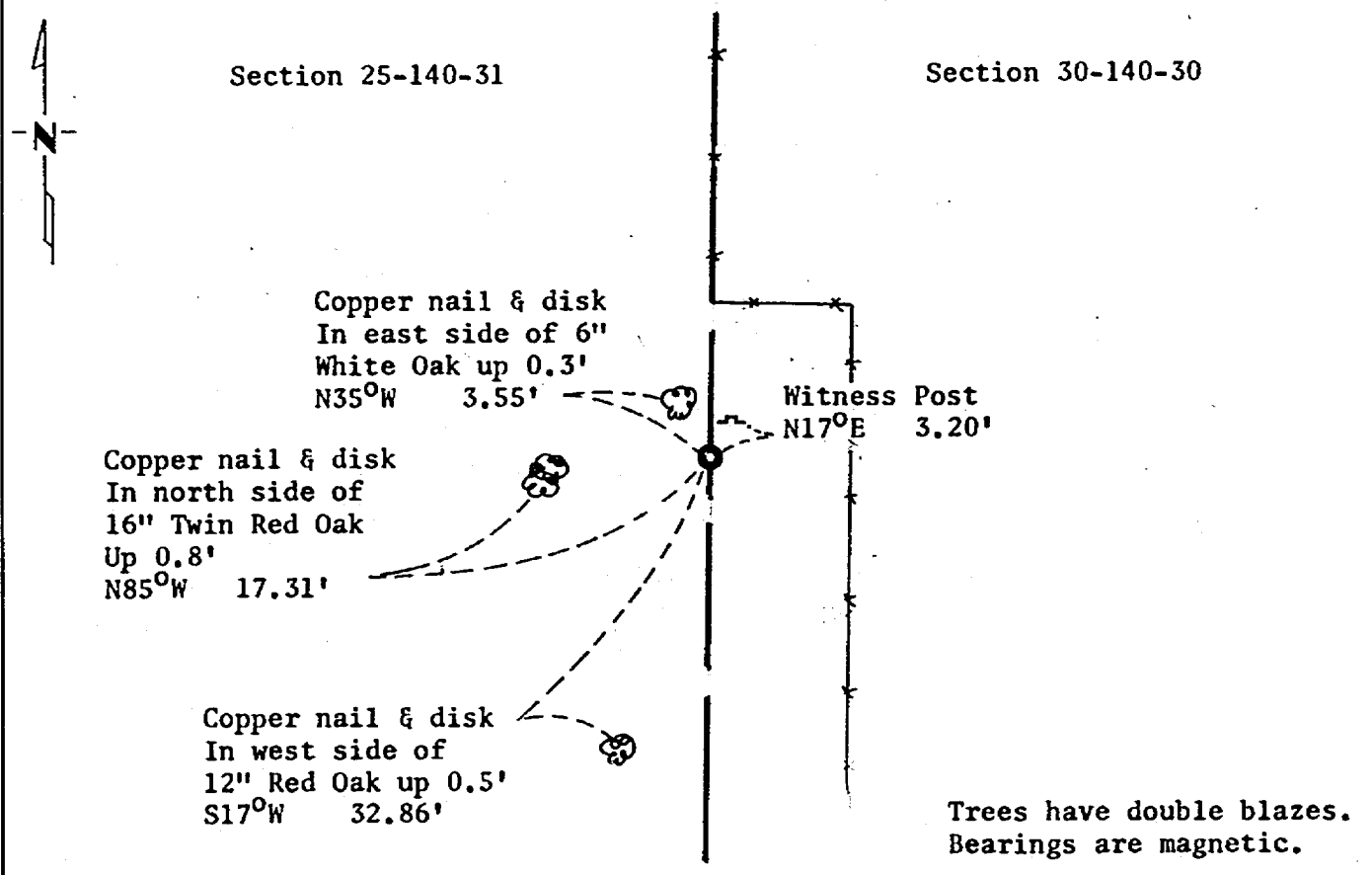
East Quarter Corner of Section 25, Township 140N, Range 31W, 5th P.M.

STATE OF MINNESOTA, County of Cass

At the corner location shown on the sketch:

- On \_\_\_\_\_ found a \_\_\_\_\_  
DATE
- left monument as found,  lowered monument,  removed monument (explain)
- On 12/23/82 placed a Minnesota DOT Cast Iron Monument  
DATE

### SKETCH OF REFERENCE TIES



Statement of evidence relative to this corner location is on back of page.

I hereby certify that this document and the data contained herein was prepared by me or under my direct supervision.

James W. Nielsen 3/4/83  
SIGNATURE DATE

Registration No. 11865

Land Surveyor,  Professional Engineer

County Surveyor,  County Engineer

OFFICE OF THE COUNTY RECORDER  
County of Cass

I hereby certify that this document was filed in the Co. Recorders office at 9:20 A.M. on the 4 day of April A.D., 1983

County Recorder Claudine Kayler  
By MS, Deputy

DOCUMENT NO. 267918

Statement of Evidence: East Quarter Corner of Section 25, Township 140 North,  
Range 31 West, 5th Principal Meridian

The Original Public Land Survey was run in 1865 and a wood post was set to mark the corner.

In 1914 Mr. J. Flynn, County Surveyor, looked for the corner but found no evidence.

In 1917 Mr. John Curo, County Surveyor, while surveying in Section 30-140-30 set a monument at the 1/16 Corner north of the said Quarter Corner.

In 1978 Mr. Robert Schneider platted a portion of the Northeast Quarter of the Northeast Quarter of Section 25 and used said 1/16 corner as the Southeast Corner of the plat.

In 1982 the Minnesota Department of Transportation recovered a 3/4" pipe at the said 1/16 corner and accepts this as the correct location for the 1/16 corner. We reset the Quarter Corner by doubling over the distance and direction from the Northeast Corner of Section 25 to the 1/16 corner.

For details and survey analysis contact the Minnesota Department of Transportation District Surveys Office in Brainerd, Minnesota.