

CERTIFICATE OF LOCATION OF GOVERNMENT CORNER

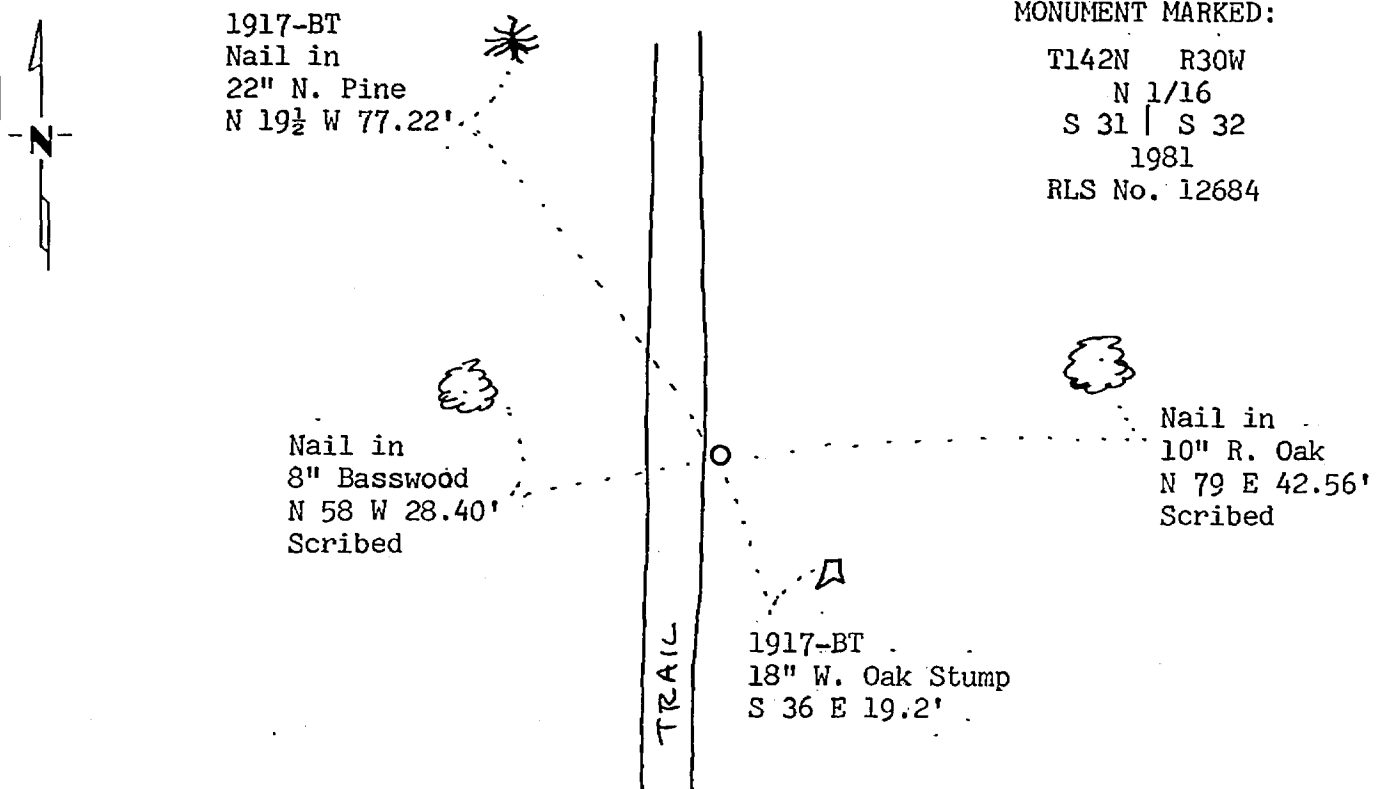
NORTH SIXTEENTH Corner of Sections 31&32, Township 142, Range 30, 5th P.M.

STATE OF MINNESOTA, County of CASS

At the corner location shown on the sketch:

- On 3/12/81 found a GLO brass cap monument with top 12" bent to the south.
DATE
- left monument as found, lowered monument, removed monument (explain)
- On 3/12/81 placed a 2"x24" galvanized iron pipe with a 3" marked brass cap.
DATE

SKETCH OF REFERENCE TIES



MONUMENT MARKED:

T142N R30W
N 1/16
S 31 | S 32
1981
RLS No. 12684

BEARINGS ARE APPROXIMATE

Statement of evidence relative to this corner location is on back of page.

I hereby certify that this document and the data contained herein was prepared by me or under my direct supervision.

Mary A. Stevenson 9-13-82
SIGNATURE DATE

Registration No. 12684

- Land Surveyor, Professional Engineer
- County Surveyor, County Engineer

264932
OFFICE OF THE COUNTY RECORDER

County of Cass

I hereby certify that this document was filed in the Co. Recorders office at 9:25 A. A.M. on the 14 day of Sept. A.D., 1982

County Recorder Daniel Herdinko

By MS, Deputy

DOCUMENT NO. 264932

Statement of Evidence:

- 1917 U.S. General Land Office dependent resurvey established this corner and an iron pipe with a marked brass cap was set to mark the corner. The following bearing trees were marked: 9" W. Oak S 36 E 29 links and 12" N. Pine N 19½ W 117 links.
- 1964 U.S. Forest Service records show the following: L. Gardner found GLO brass cap monument in place.
- 1981 U.S. Forest Service technician W. Olson found the corner monumented with a GLO brass cap monument with top 12" bent to the south at east edge of north-south trail. Replaced the bent monument with a 2"x24" galvanized iron pipe with a 3" marked brass cap down 3" in same position. The following bearing trees were found: 22" N. Pine N 19½ W 77.22' and 18" W. Oak stump S 36 E 19.2' with center rotted. Two new bearing trees were marked and are shown on this certificate. Steel sign post was set 4.4' south of the corner.
- 1982 County Surveyor's Records in the Recorder's Office were checked and no resurvey information was found on this corner.
- 1982 On Sept. 9 I visited the corner and found items as per the 1981 USFS reports. Also found part of negative scribe marks on lower blaze of Oak stump. N. Pine has overgrown scar facing corner. Based on the bearing trees, I accepted the new monument as marking the same position of the corner as when set in 1917.