

# CERTIFICATE OF LOCATION OF GOVERNMENT CORNER

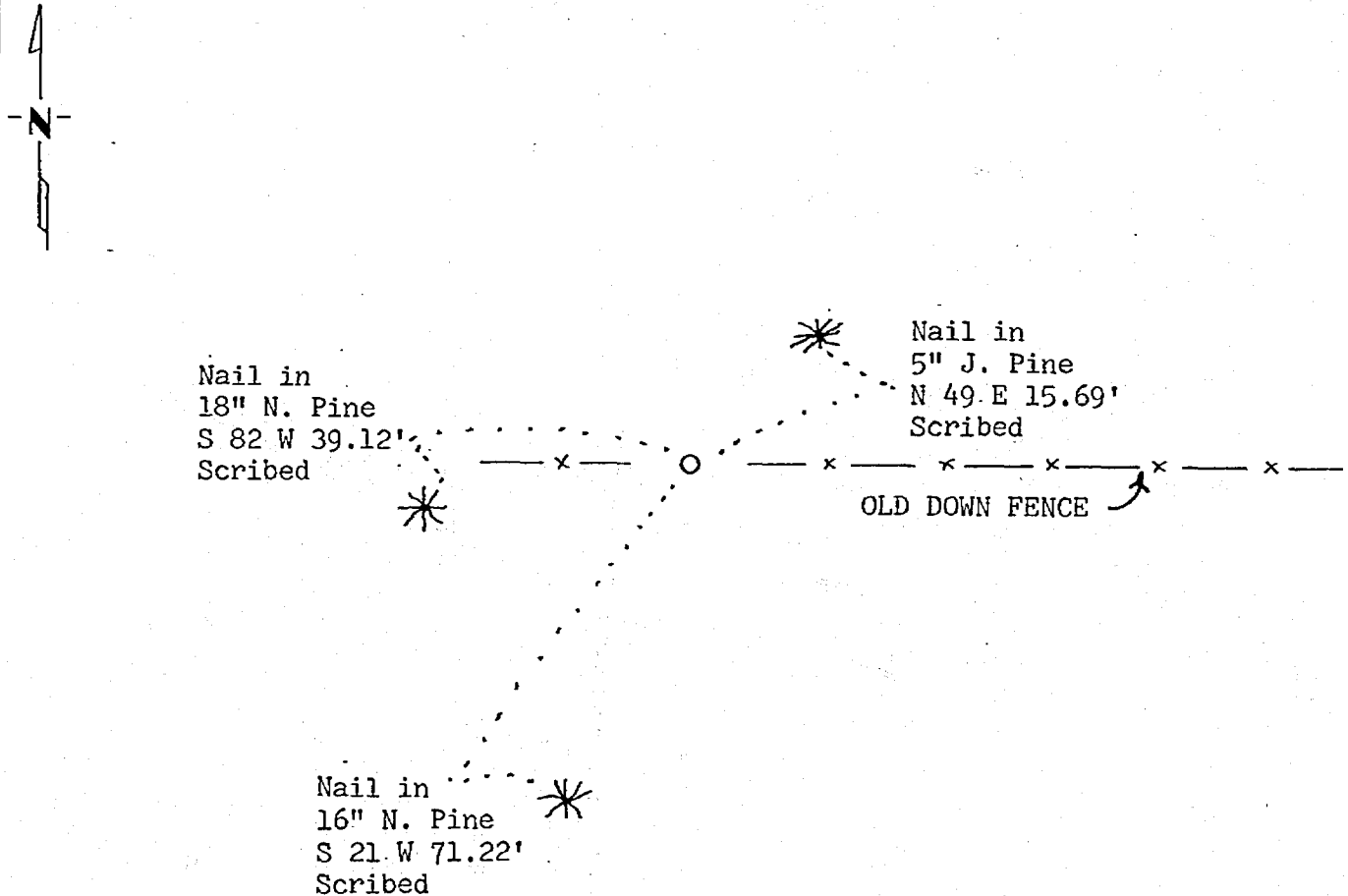
NORTH QUARTER Corner of Section 34, Township 145, Range 28, 5th P.M.

STATE OF MINNESOTA, County of CASS

At the corner location shown on the sketch:

- On 4/20/82 found a scribed wood post laying down with the post point  
DATE  
in the ground.
  - left monument as found,  lowered monument,  removed monument (explain)
- On 4/27/82 placed a Cass County Cast Iron Monument with king bolt  
DATE  
below at position of found post point.

## SKETCH OF REFERENCE TIES



BEARINGS ARE APPROXIMATE

Statement of evidence relative to this corner location is on back of page.

263908

I hereby certify that this document and the data contained herein was prepared by me or under my direct supervision.

Doug H. Stevens 5-14-82  
SIGNATURE DATE

Registration No. 12684

- Land Surveyor,  Professional Engineer
- County Surveyor,  County Engineer

OFFICE OF THE COUNTY RECORDER

County of Cass

I hereby certify that this document was filed in the Co. Recorders office at 9:50 A.M. on the 22 day of July A.D., 1982

County Recorder Burlock Herdinger

By MS, Deputy

DOCUMENT NO. 263908

Statement of Evidence:

- 1873 U.S. General Land Office survey set wood post for this corner and marked the following bearing trees: 6" Pine stub S 13 E 48 links and 3" Birch N 60 E 18 links.
- 1906 Plat of the Village of Bena was surveyed by James Middleton. The plat shows the north line of the Northeast Quarter, of Section 34, but does not show the North Quarter corner.
- 1907 County Surveyor's Record Book B pages 323 to 327 show survey by John Curo. Curo found a stake set for the corner by former County Surveyor James M. Canfield with new bearing trees marked by Canfield as follows: 8" J. Pine S 74-15 W 30.40' and 6" J. Pine N 61-03 W 8.20'.
- 1936 U.S. Forest Service records shows J.A. Gjelhaug found corner and set an iron king bolt with new ties: 10" J. Pine N 61-30 W 31 links (20.5') and 10" J. Pine S 48 W 51 links (33.7'). Iron was at fence corner.
- 1982 I found a squared scribed wood post laying down with remains of the post point found in the ground. A 1½" badly rusted iron pipe was found 0.3' east and a 1½" iron king bolt was found 0.7' east of the post point. All of the items were found in an old down east-west fence line. I did not find any positive evidence of the bearing trees listed by Curo in 1907. A stump depression was found at the approximate bearing and distance for the SW tree. I did find the stump and log of Gjelhaug's NW tree with "BT" scribe plainly visible. From the post point the center of the 18" J. Pine stump was found to be N 60 W 19.9'. I accepted the post point as the perpetuated position of the original corner. I removed the 1½" iron pipe and king bolt. I placed the king bolt below a Cass County cast iron monument set at the position of the found post point. Three new bearing trees were scribed and are shown on this certificate.

SE-SW Sw. 27  
SW-SW