

CERTIFICATE OF LOCATION OF GOVERNMENT CORNER

SE Corner of Section 4, Township 141, Range 28, 5th P.M.

STATE OF MINNESOTA, County of Cass

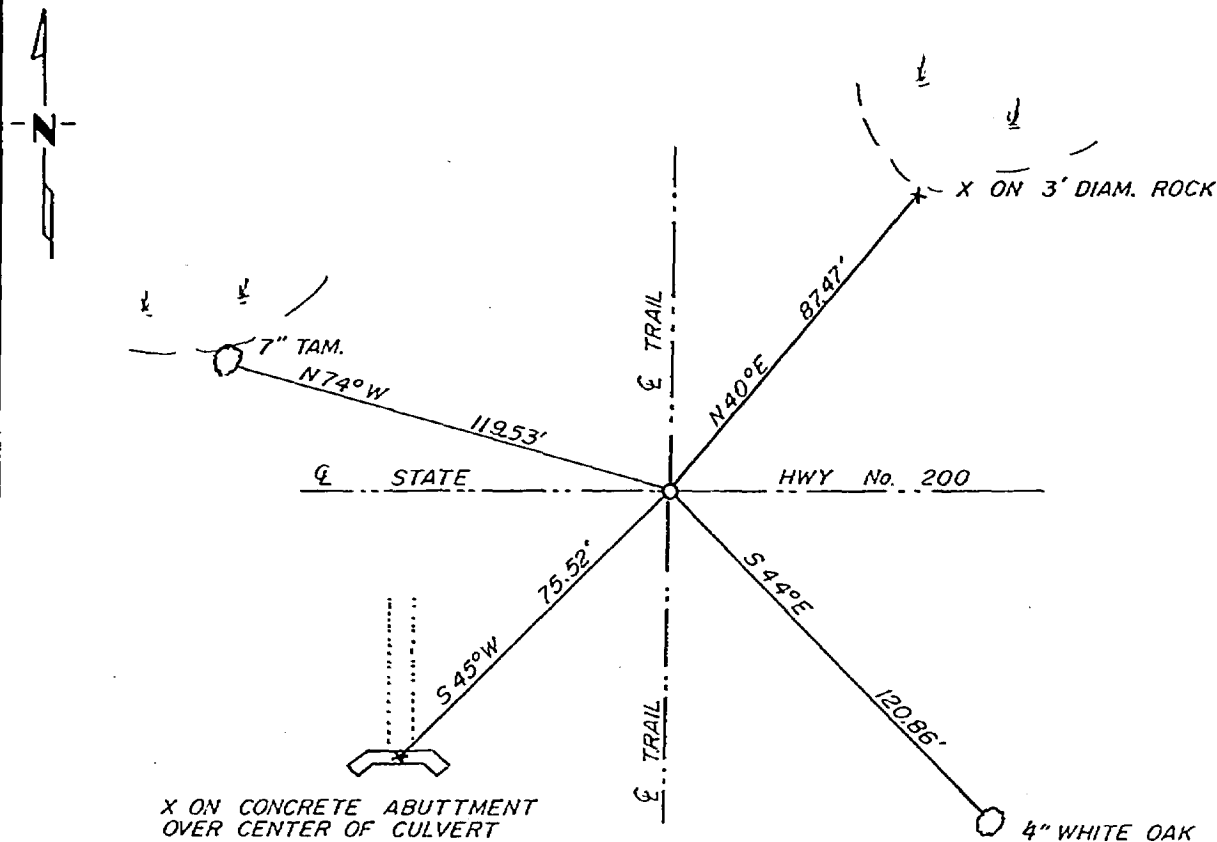
At the corner location shown on the sketch:

On 6-3-82 found a 6" spike 1 1/2' below surface
DATE

left monument as found, lowered monument, removed monument (explain)

On _____ placed a _____
DATE

SKETCH OF REFERENCE TIES



Statement of evidence relative to this corner location is on back of page.

263109

I hereby certify that this document and the data contained herein was prepared by me or under my direct supervision.

Walter E. Curcio 6-7-82
SIGNATURE DATE

Registration No. 11395

Land Surveyor, Professional Engineer

County Surveyor, County Engineer

OFFICE OF THE REGISTER OF DEEDS

County of Cass

I hereby certify that this document was filed in the Reg. of Deeds office at 10:00 A.M. on the 7 day of June A.D., 1982

Register of Deeds Dorothy Herdinger

By MS, Deputy

DOCUMENT NO. 263109

Statement of Evidence:

In 1918, Earl G. Harrington, a US surveyor set a 1"x36" iron pipe with brass cap for the corner to sections 3-4-9 and 10 from which he marked the following Bt's. A 6" poplar N-45E 113Lks., A 18" WO S 66½W 61 Lks., A 14" poplar N 73 W 109 Lks, all of which were obliterated by the construction of the highway.

On 6-3-1982, Walter E. Curo found a 6" spike 1½ feet below the surface of the black top. The distance from this spike to the S¼ corner is .44 of a foot longer than G.L.O. distance and the distance from this spike to the E¼ corner is .56 of a foot shorter than G.L.O. I replaced the spike with a 2"x36" iron pipe with a brass cap.