

# CERTIFICATE OF LOCATION OF GOVERNMENT CORNER

Northeast Corner of Section 12, Township 138N, Range 31W, 5th P.M.

STATE OF MINNESOTA, County of Cass

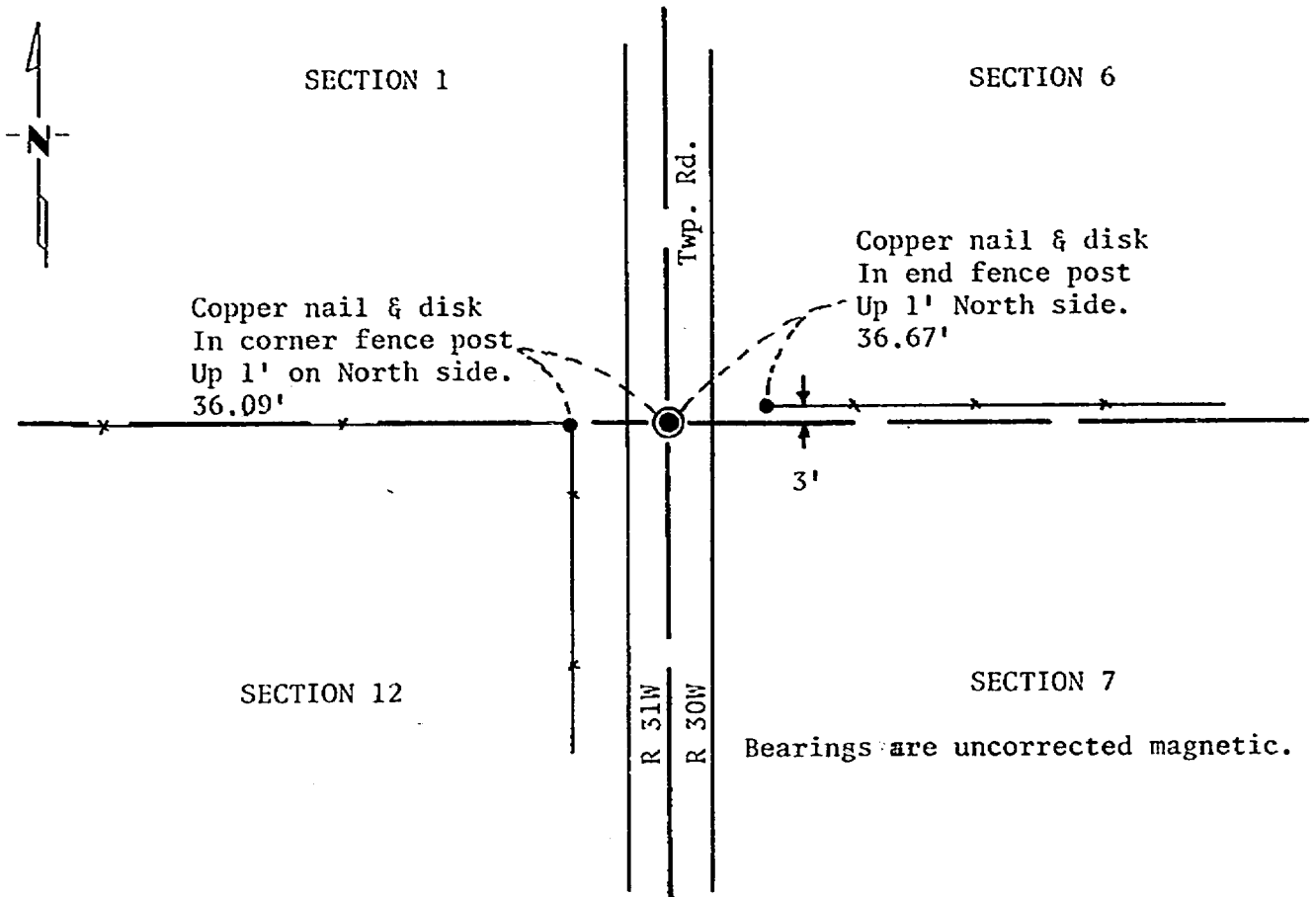
At the corner location shown on the sketch:

On 02/25/81 found a 3" pipe (down 1').  
DATE

left monument as found,  lowered monument,  removed monument (explain)

On 02/25/81 placed a 3/4" x 18" Iron pin in pipe (flush).  
DATE

### SKETCH OF REFERENCE TIES



Monument is in the centerline of road and fence West.

Statement of evidence relative to this corner location is on back of page.

I hereby certify that this document and the data contained herein was prepared by me or under my direct supervision.

Alphonse P. Welle 9/28/81  
SIGNATURE DATE

Registration No. 11873

- Land Surveyor,  Professional Engineer
- County Surveyor,  County Engineer

<sup>262931</sup>  
OFFICE OF THE COUNTY RECORDER  
County of Cass

I hereby certify that this document was filed in the Co. Recorders office at 11:05 A.M. on the 25 day of May A.D., 1982

County Recorder Bessie Hardwick  
By MS, Deputy

DOCUMENT NO. 262931

Statement of Evidence:

Northeast Corner Section 12, Township 138 North,  
Range 31 West, 5th Principal Meridian.

In 1865, during the Original Public Land Survey, a wood post was set to mark the corner.

In 1911 Mr. Curo, Cass County Surveyor, set a 2" x 48" Iron pipe at this corner.

In 1919 Mr. Curo used the Iron pipe in a subdivision of Section 6-138-30.

In 1940 the CCC (Civilian Conservation Corps) recovered the 2" iron pipe in the middle of the road.

In 1981 the Minnesota Department of Transportation recovered the 2" iron pipe and placed a 3/4 inch pin over the pipe.

For details and survey analysis contact the Minnesota Department of Transportation District Surveys Office in Brainerd.