

# CERTIFICATE OF LOCATION OF GOVERNMENT CORNER

AP 3 TR 1693 Corner of Section 36, Township 142, Range 30, 5 P.M.

STATE OF MINNESOTA, County of CASS

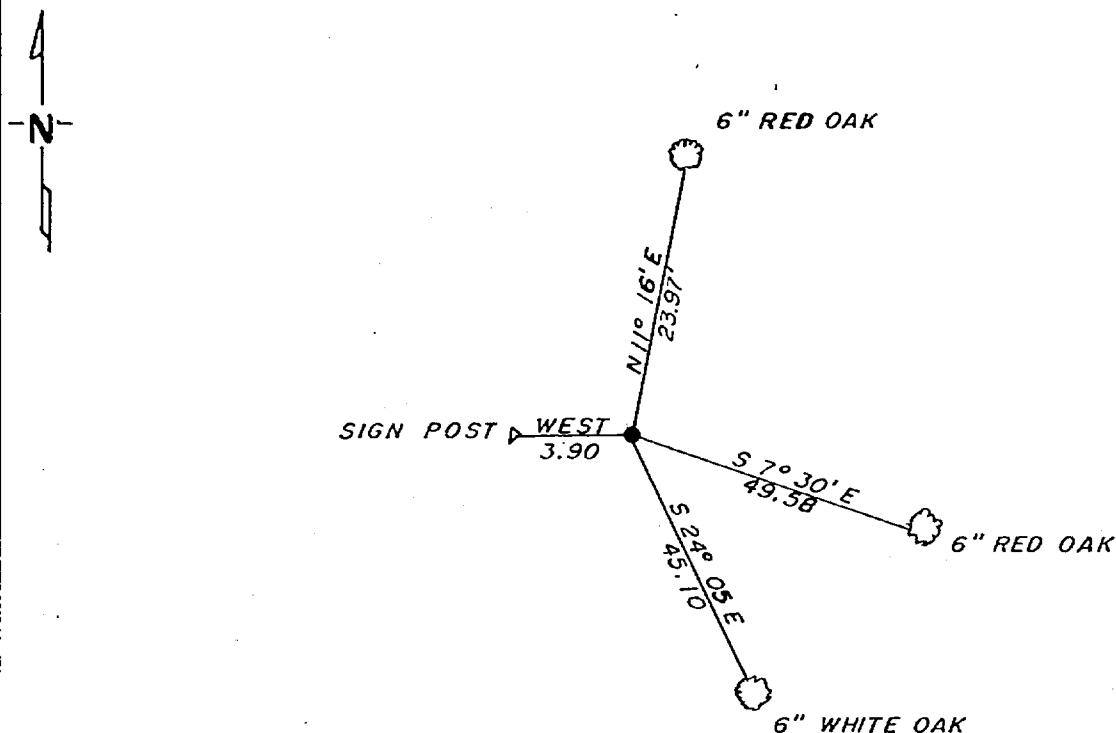
At the corner location shown on the sketch:

On 9-24-81 found a 1" x 36" iron pipe with brass cap standing in good condition.

left monument as found,  lowered monument,  removed monument (explain)

On \_\_\_\_\_ placed a \_\_\_\_\_

### SKETCH OF REFERENCE TIES



NOT TO SCALE

Statement of evidence relative to this corner location is on back of page.

I hereby certify that this document and the data contained herein was prepared by me or under my direct supervision.

Walter E. Lewis 12-8-81  
SIGNATURE DATE

Registration No. 11395

Land Surveyor,  Professional Engineer

County Surveyor,  County Engineer

262646  
OFFICE OF THE REGISTER OF DEEDS  
County of Cass

I hereby certify that this document was filed in the Reg. of Deeds office at 2:48 P.M. on the 7 day of May A.D., 1982

Register of Deeds Beverly Hendricks

By MS, Deputy

DOCUMENT NO. 262646

In 1917, Albinus N. Kimmell, a US Cadastral engineer set a 1"x36" iron pipe with brass cap for AP 3 TR 1693 and AP 4 TR 1313. No BT's were made.

On October 24, 1981, Walter E. Curo and Paul Johnson found the brass cap monument in good condition from which we made the BT's as shown on the front.